

In this issue:

- **Feature story:** Where can I find research on Miramar College?
- **Spotlight on Research:** Fall 2017 Student Scheduling Preferences Survey
- Research Update Corner
- Calendar of Events
- And more!

Data Nerd News

Miramar College Office of Planning, Research, and Institutional Effectiveness's Bi-monthly Newsletter

March | Volume 1 | 2018

Really, another newsletter?

We know your Outlook inbox is full of emails—and probably a lot of newsletters, too. However, we hope that you'll find it worth your time to join us every other month for the latest edition of *Data Nerd News*, your lens into what is happening in Miramar College's Office of Planning, Research, & Institutional Effectiveness (PRIE) and with your in-house "data nerds."

PRIE's "data nerds" are Daniel Miramontez, Dean of the School of Planning, Research & Institutional Effectiveness, Library & Technology; Naomi Grisham, College-wide Outcomes and Assessment Facilitator; Xi Zhang, Research & Planning Analyst; Kristine Kilanski, Research Associate; and Val Sacro, Senior Secretary, PRIELT. Collectively, we bring over 50 years of experience conducting research in schools and other settings. Our job is to conduct methodologically sound and intellectually honest research to inform college planning efforts, and ensure that supporting student success is at the heart of every decision we make at Miramar College.

Our goals in introducing a newsletter are two-fold. First, we want to keep you in the loop on the research that PRIE is already conducting to support Miramar College's mission and goals. Second, we hope to draw attention to the ways our team's expertise and experience can be useful to you. While we've enjoyed working with many of you already, we love it when people visit our office for help with accreditation, program evaluations, outcomes assessment, and grant applications and evaluations—and hope to see even more of you soon!

We're proud to be data nerds, and we're excited to be working alongside you to make sure every Miramar College student gets the experience that they deserve on our campus!

Need to request research?

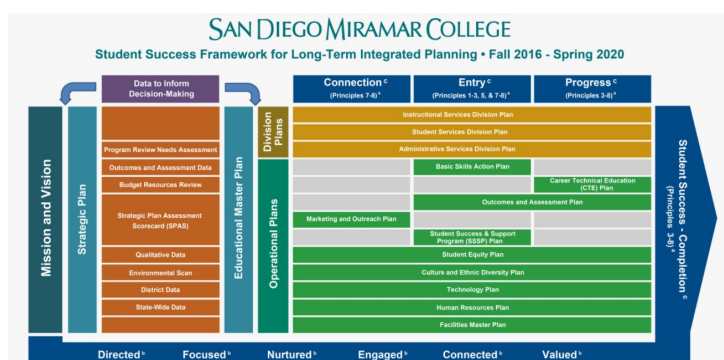
It's easy! Submit a [research request](#).

But first, check out page 2 to see if your question has already been answered.

Did you know that PRIE won a state-wide award for its planning?

Click on the image below to be taken to the award-winning planning website!

I'm interactive! Click any link to learn more.



Where Can I Find Research on Miramar College?

The Office of Planning, Research, and Institutional Effectiveness works tirelessly to make sure Miramar College is in compliance with a variety of institutional reporting requirements.

Got a question about Miramar College?

You'll likely find the answer in one of the existing research reports listed below.

Want an overview of the types of metrics PRIE reports to external and internal constituents? Take a look at this [crosswalk](#).

Can't find what you need in any of the listed reports?

Submit a [research request](#).

[Miramar College Strategic Plan Assessment Scorecard \(SPAS\)](#)

The SPAS is designed to answer the following three questions: (1) How is San Diego Miramar College meeting its mission?; (2) How do we measure our success; and (3) How do we build on our success? The SPAS includes collegewide benchmarks and examines how close we are to achieving those goals.

[Miramar College Fact Book](#)

The Fact Book is updated annually and contains the following sections: headcount and student characteristics; persistence rates; student completion; productivity and efficiency; and Human Resources.

[Facts on File](#)

Facts on file is updated annually and contains basic information on Miramar College's student enrollment and outcomes and human resources.

[High School Pipeline Report](#)

This annual report provides a descriptive analysis of incoming first-time to college high school graduates. Sections include: Entering the Community College Pipeline; College Preparedness and Placement; Student Characteristics and Enrollments; and Student Successful Course Completion.

[Basic Skills Report](#)

This college-level report seeks to answer the following questions: (1) What proportion of incoming students place into Basic Skills courses; (2) How has the number of enrollments in Basic Skills courses changed over the past five years?; (3) What is the persistence rate of students in Basic Skills courses; and (4) How well do students perform in their Basic Skills courses?

[Awards Conferred](#)

This report provides a detailed summary of the degrees and certificates conferred by Miramar College over a five-year period.

[SDCCD Transfer Report](#)

This report examines transfer volume and transfer rate of students to a 4-year institution from the district and individual colleges. Results are disaggregated by ethnicity and gender.

[2017 IPEDS Data Feedback Report](#)

Prepared by the National Center of Education Statistics, this report compares Miramar College to a group of institutional peers on a number of metrics, such as: student characteristics; headcount; awards conferred; tuition & fees; financial aid; retention rates; transfer rates; graduation rates; and human resources.

SPOTLIGHT ON RESEARCH

Interested in making data-driven decisions to support student success? Did you know it's possible to receive research and planning support from PRIE? Below, we interview three members of the Miramar College campus community who have worked closely with PRIE to improve the student experience: IEPI Bridge Project Leads, **Mary Kjartanson**, **Lisa Clarke**, and **Patricia Martinez**.

What was your research request? Miramar College students are very busy. Many of our students juggle school with other commitments, such as working full- or part-time and caring for family members. To support student success requires creating a course schedule that is responsive to the many important demands on their time. We contacted PRIE because we were interested in understanding student needs. We knew PRIE has the research experience, expertise, and tools to help us gain the insights we were seeking.

What did working with PRIE entail? Working with PRIE is a partnership. We provided our subject area expertise, while PRIE provided advice on the best strategies for gaining high-quality information that we could use in informing possible changes to Miramar College's course schedule. Once we decided on the research strategy—an online census of Miramar College Students—PRIE worked with us to develop the survey questions. PRIE took ownership of deploying the survey. Once data collection was complete, they analyzed the results. They shared the findings with us in a PowerPoint we could use in communicating the results to the rest of the Miramar College community. That was really helpful!

How did this research request conclude? In response to the feedback we received from the 1400 students who took the survey, we are considering adding several new time slots to the schedule. We're also working with PRIE to deploy another survey this Spring.

This will allow us to examine if there is consistency in students' scheduling needs, or if they change on a term by term basis. We are also introducing new questions that will allow us to disaggregate the data in new ways.

Would you consider working with PRIE again? See above. YES!

Top 5 Findings from the Fall 2017 Scheduling Preferences Survey

- 1** 95% of students reported that Miramar College was among their preferred SDCCD campuses. **Miramar College was the sole preference of 79% of all respondents!**
- 2** The majority of students prefer a 16-week semester over an 8-week semester.
- 3** The majority of students prefer courses that are offered Monday through Thursday. However, students also seek the flexibility of Friday and weekend courses (roughly a quarter like taking courses these days).
- 4** Almost half of students prefer courses between 8:00 a.m. and 12:00 p.m. A quarter prefer courses in between 12:00 p.m. and 5:20 p.m. and 31% prefer courses between 5:20 p.m. and 9:35 p.m. (Students could select more than one preference).
- 5** 56% of students prefer two course meetings a week. A quarter preferred three course meetings a week. (Students could select more than one preference).

"Miramar is close to me and convenient. ALSO it has amazing professors." - Miramar College Student

Research Update Corner

- Miramar College has approved its latest Collegewide Research Agenda (2017-2020). The agenda prioritizes institutional research projects based on the mission and goals of the college, and is determined through the processes of participatory governance. The Collegewide Research Agenda now covers a three-year period instead of a single academic year. This makes it easier to plan for and prioritize projects with multi-year timelines.
- The Fall 2017 – Spring 2020 Environmental Scan Study has been completed by the Research Subcommittee and PRIE and is currently being finalized. Look for it to be posted to PRIE's website.
- PRIE has been busy supporting Miramar College's program review process. At a recent FLEX workshop, PRIE premiered the Program Review Interactive Data Dashboard (PRIDD). This tool enables faculty to disaggregate outcomes such as course retention and success by program, student type, course modality, race/ethnicity, and gender. Persons interested in accessing the PRIDD should contact the Vice President of Instruction's Office for assistance. A [comprehensive user guide](#) is also available for those needing assistance in using the tool.
- PRIE released a [FAQ sheet on finding and using benchmarks](#) and utilizing them in program review.
- PRIE has been busy consulting with faculty and classified professionals who are applying for the Student Equity Grant and the Student Success for Basic Skills Grant (SSBS). Come visit us for research support.

Protecting Student Data is on YOU!

The [Family Educational Rights and Privacy Act \(FERPA\)](#) is a federal law that protects the privacy of student records. Miramar College has strict guidelines in place regarding the use of student data in order to comply with FERPA, and most importantly, protect our amazing students. Anyone making a research request or working with student data should read the [Miramar College Guidelines for Protecting Data Sensitivity \(GPDS\)](#) and the [Miramar College GPDS FAQs](#).

Upcoming!

- **March 12:** Research Subcommittee Planning Meeting (3:00 p.m. to 4:30 p.m. in Room L-107)
- **March 16:** Collegewide Planning Summit

Collegewide Planning Summit Flex #95520

Student Success Comes Alive!

ACT^x: Action, Collaboration, and Transformation

Friday, March 16, 2018, 8:30 a.m. to 2:00 p.m.
Room K1-107

*Prizes for group activities will be provided!
And don't forget to bring your charged cell phones.*

Please send your RSVP to Val Sacro by Friday, March 9, 2018

- Spring 2018 Student Scheduling Preferences Survey to be distributed to Miramar College students
- Cultural Climate Survey to be distributed to SDCCD employees