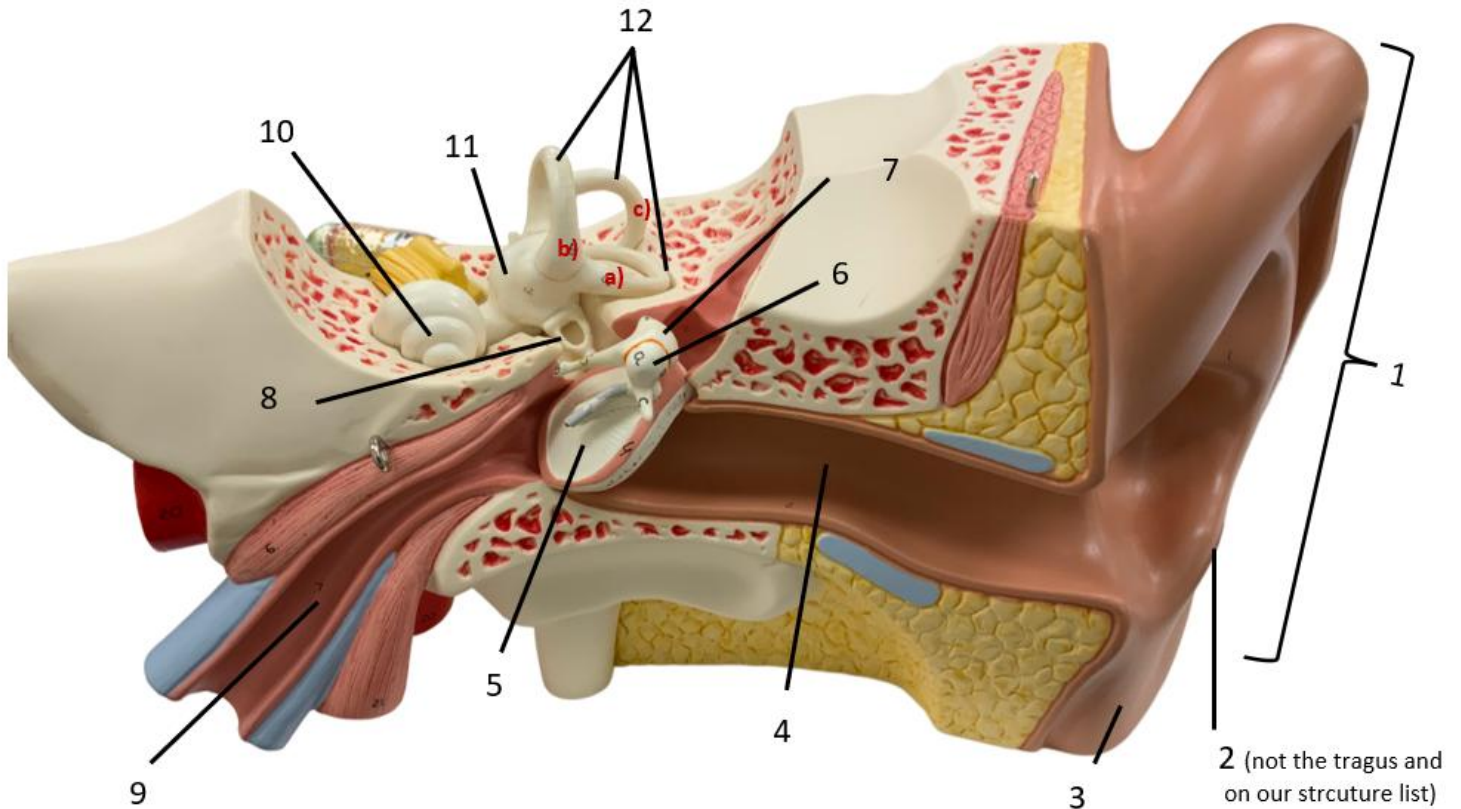


# The Ears and Eyes: Special Senses

## Anatomy Model Labelling

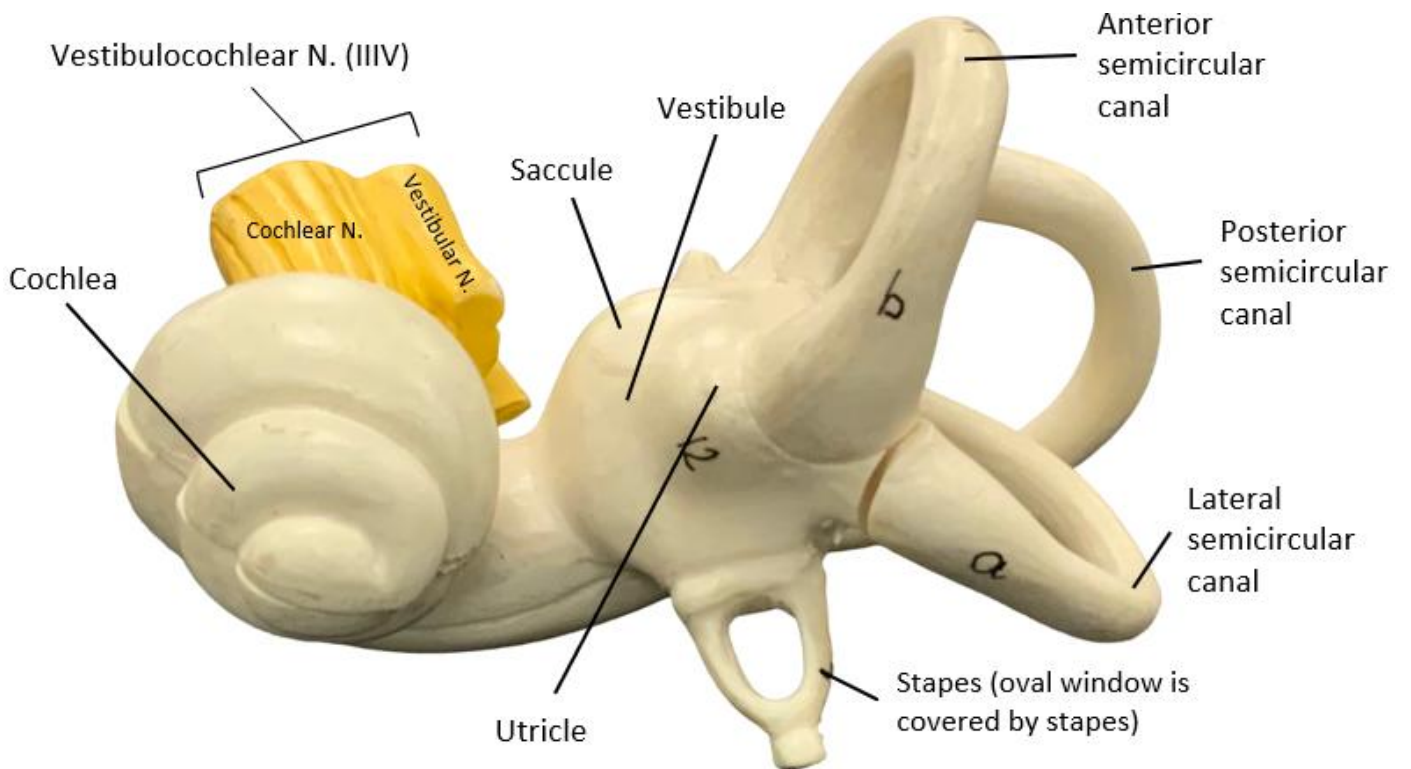
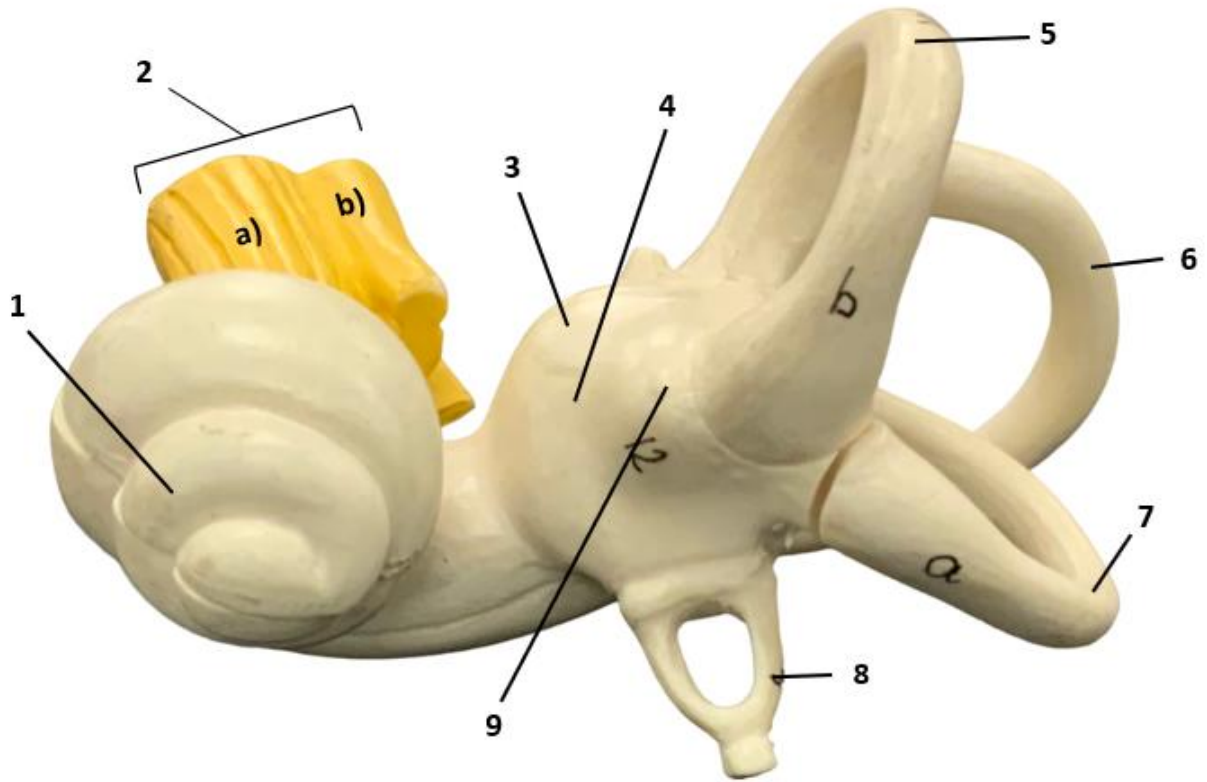
### The Ear: Outer, Middle and Inner



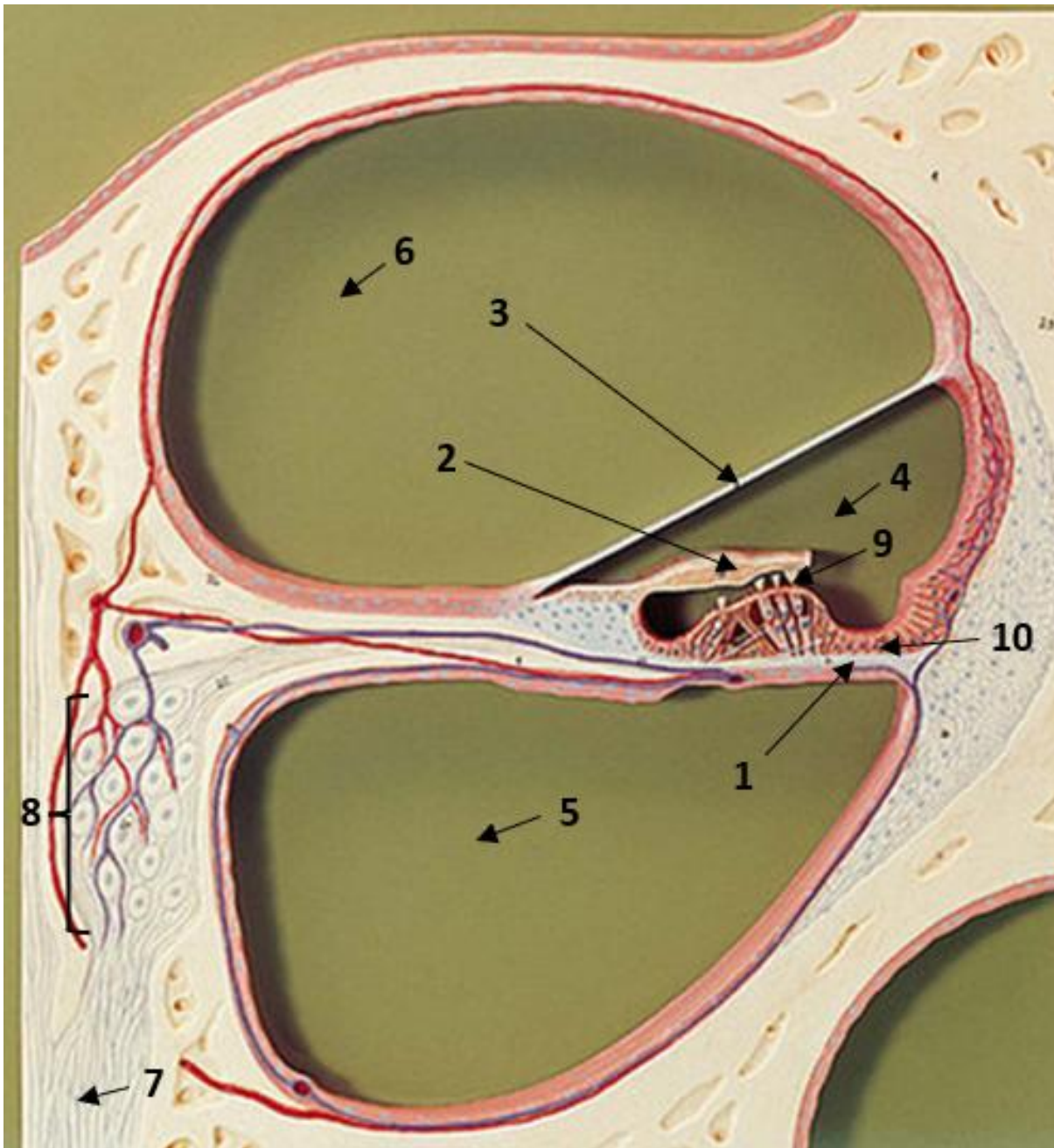
1. Auricle (Pinna)
2. Antitragus (not on our list!)
3. Lobe
4. External auditory meatus (canal)
5. Tympanic membrane
6. Malleus
7. Incus
8. Stapes
9. Auditory (Eustachian) tube
10. Cochlea
11. Vestibule
12. Semicircular canals: **a)** lateral, **b)** anterior and **c)** posterior.

Note: The Oval window (covered by stapes) and the Round window cannot be seen from this aspect.

### The Inner Ear

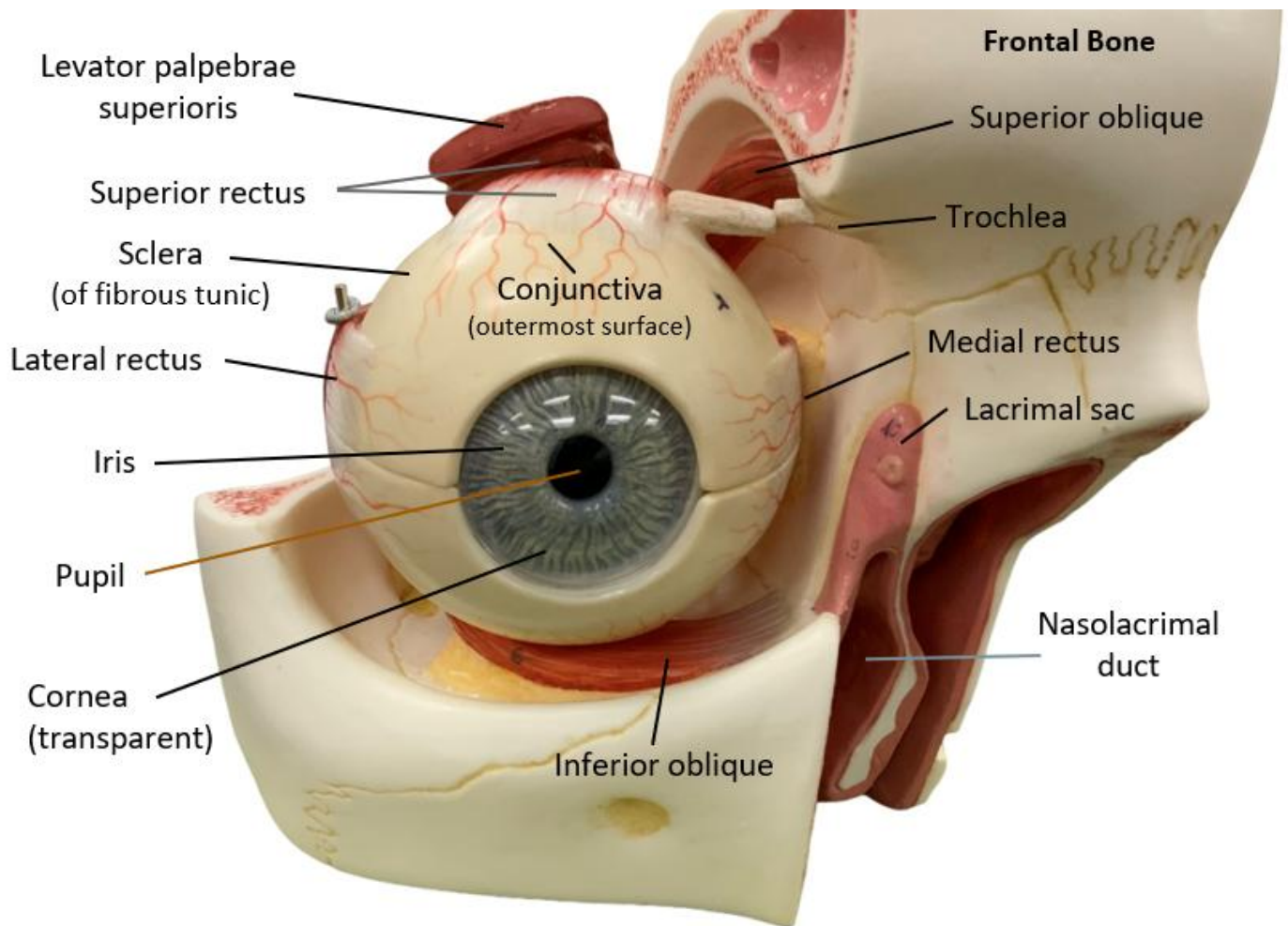


## The Histology Model of the Cochlea (Inner Ear)

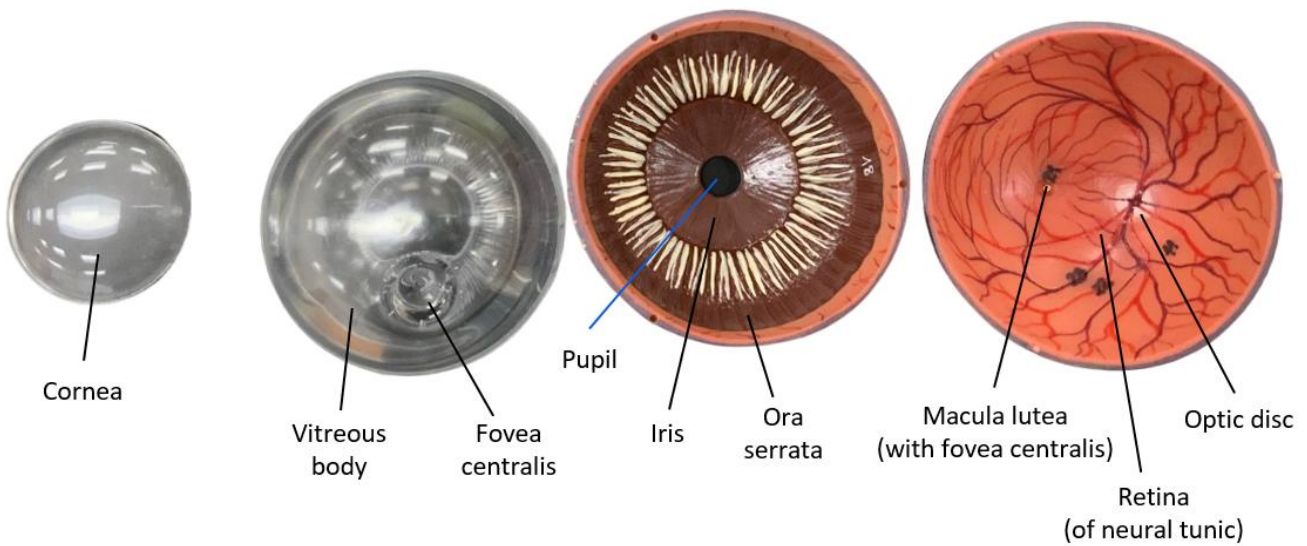
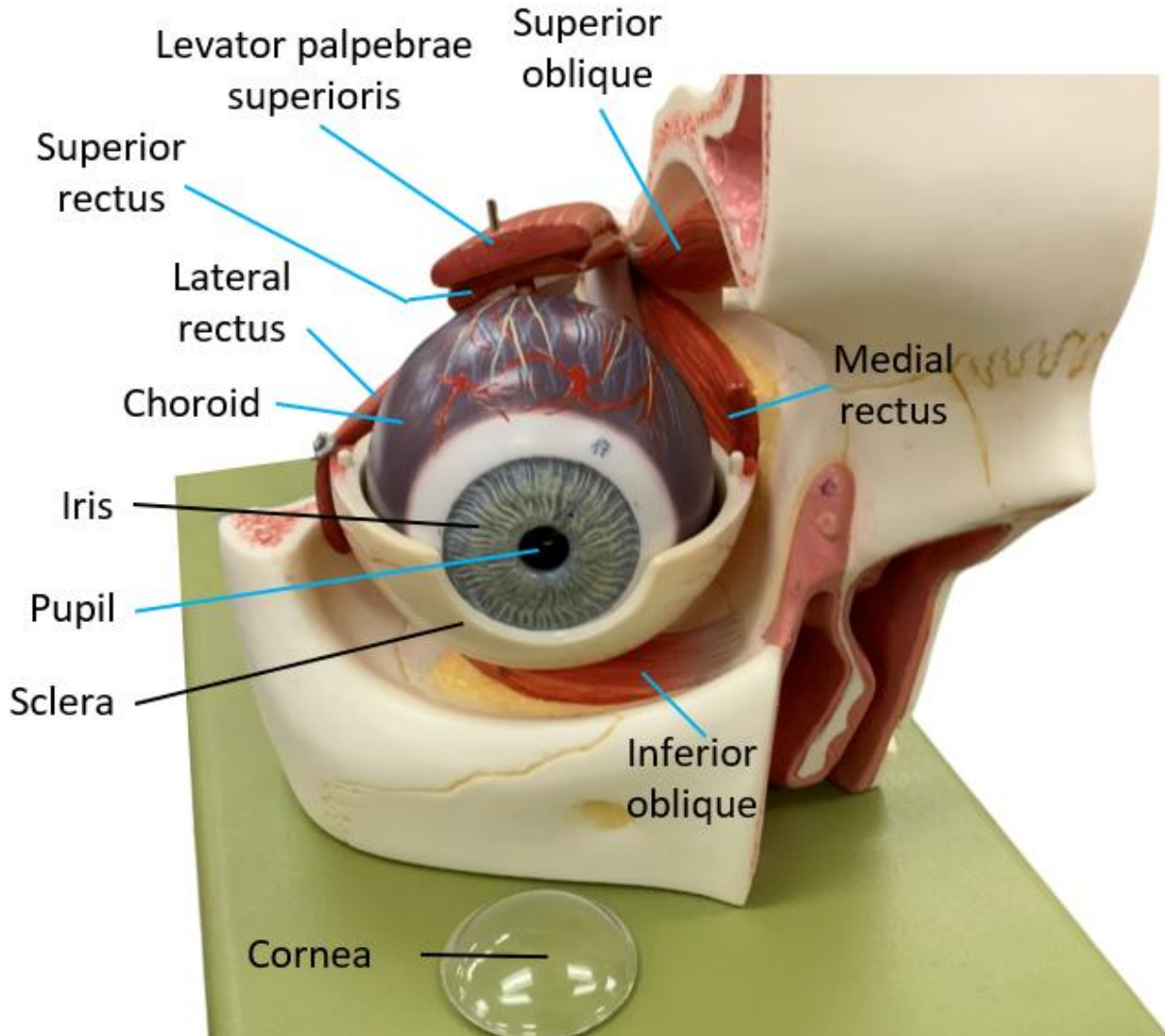


- |                                  |                                      |
|----------------------------------|--------------------------------------|
| 1. Basilar membrane              | 6. Scala vestibuli (vestibular duct) |
| 2. Tectorial membrane            | 7. Cochlear nerve                    |
| 3. Vestibular membrane           | 8. Spiral ganglion                   |
| 4. Scala media (cochlear duct)   | 9. Hair cells                        |
| 5. Scala tympani (tympanic duct) | 10. Supporting cells                 |

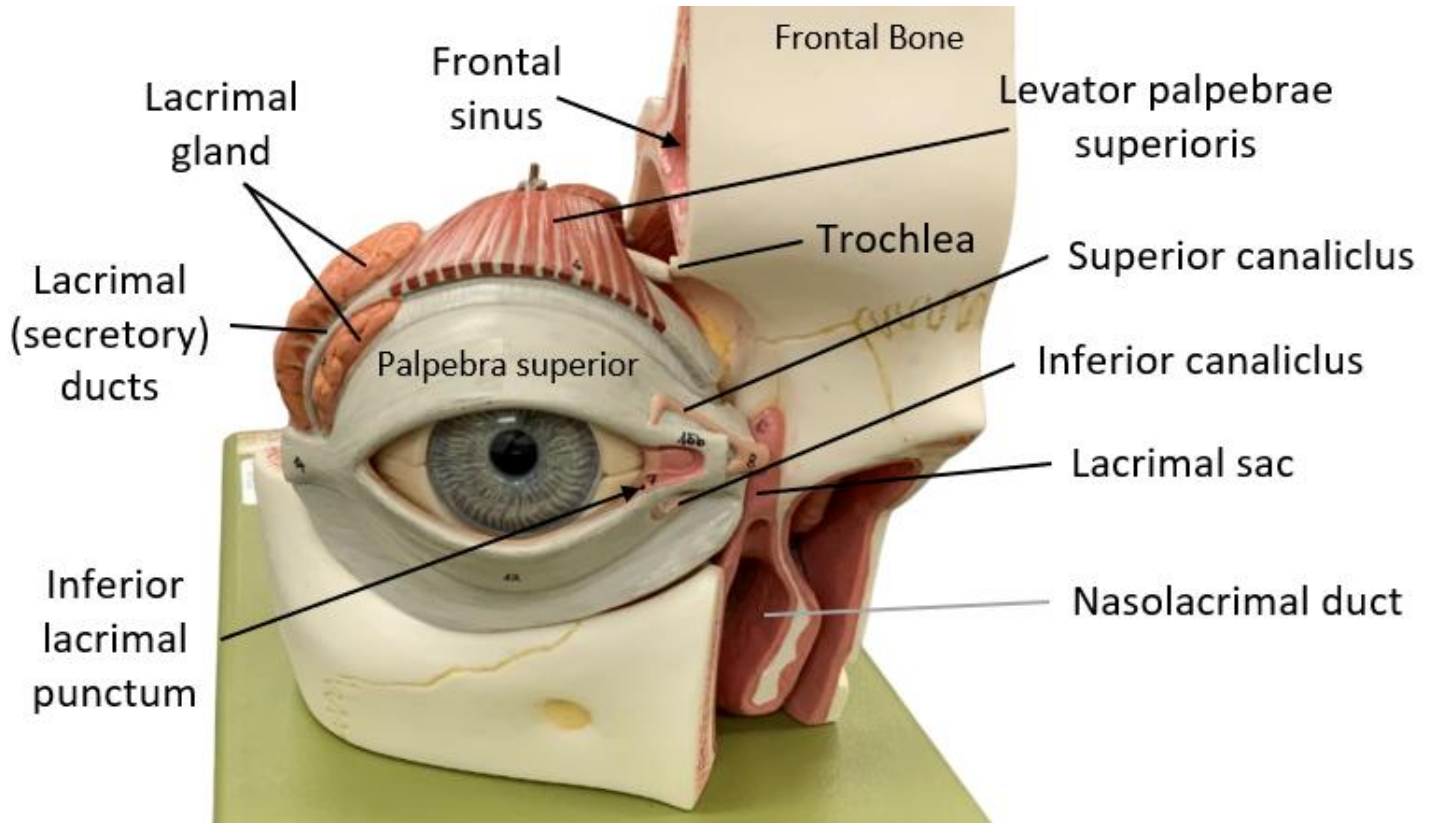
## The Eye and Orbit



## The Eye and Orbit: Extrinsic Muscles and Inner Tunics



## The Lacrimal Apparatus of the Eyeball



## The Mid-sagittal section of the Eyeball

