



SAN DIEGO  
**MIRAMAR COLLEGE**

# **SPRING KICKOFF**

**Thursday, January 29, 2026**

**9:00 AM - 12:00 PM**

**LLRC Auditorium (L-105)**

**Flex #31079**



# Land Acknowledgement

We recognize that San Diego Miramar College sits on the ancestral homeland of the Kumeyaay, Luiseño, Cupeño, and Cahuilla tribes, who have lived in this area for well over 10,000 years, and we honor their past, present, and future connection to this land and its inherent connection to their identity.

We acknowledge our occupation of unceded Kumeyaay land and the violent systemic injustices this has continuously perpetuated for Native peoples of this region. We pay respect to the Indigenous people of San Diego County - past, present, and future - and honor their continuing presence in their homeland and their spiritual beliefs that land does not belong to people; people belong to land.

We also acknowledge that this is merely the beginning, and there is far more work to be done in an attempt to heal all of the injustices and inequities that still exist today and throughout their entire historical diaspora. We commit to moving forward together.





Rodrigo Gomez  
A.S. President



Malia Kunst  
C.S. President



Ariella O'Garro  
ASG President



# New Employee Recognition



Albert Aure  
Counselor - Athletics



Kyle McGough  
College Technical Analyst



John Abbott  
Student Services Technician

Promotion!



Sarah Laue  
Administrative Technician



Beverly Garcia  
Work-Based Learning Coordinator



Brooke Callahan  
Exercise Science



Esme Bajo  
Mathematics



Victoria Neises  
Biology



Justin Matsushita  
Public Administration



Boglarka Kiss  
Dean, Liberal Arts



Jose Enriquez  
Counselor, LEAD





P. Wesley Lundburg, Ph.D.  
President

# President's Message

San Diego Miramar College's mission is to prepare students to succeed by providing quality instruction and services in an environment that supports and promotes diversity, inclusion, and equity with innovative programs and partnerships to facilitate student completion for degrees/certificates, transfer, workforce training, and/or career advancement.







# SAN DIEGO

## Community College District



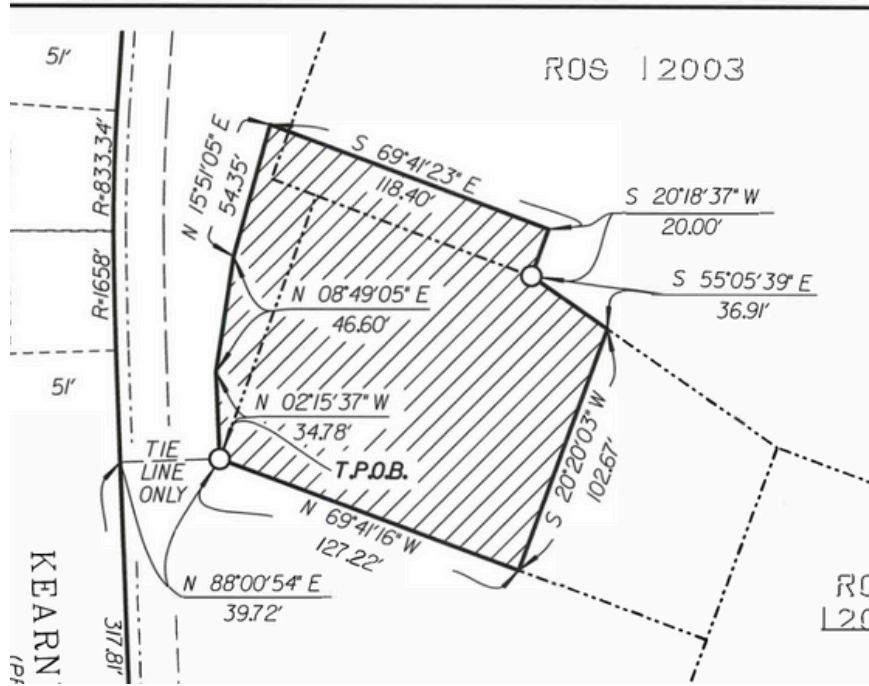
# Measure HH Bond Projects



# Montgomery Field Aviation Instructional Center



- **Scope:**
  - Replaces the existing 6,300 SF facility with a new instructional center
  - Supports expanded aviation workforce training with modern technology, climate control, and advanced instructional equipment
  - Improves safety and instructional quality for students and faculty
  - Includes site upgrades: new utilities, walkways, accessible parking, landscaping, and signage
- Swing space needs are anticipated and will be identified & addressed with campus input during the design process.
- Programming began at the end of September 2025.
- Site logistics, such as swing space, to be discussed during the design phase.
- Construction to begin in 2027!



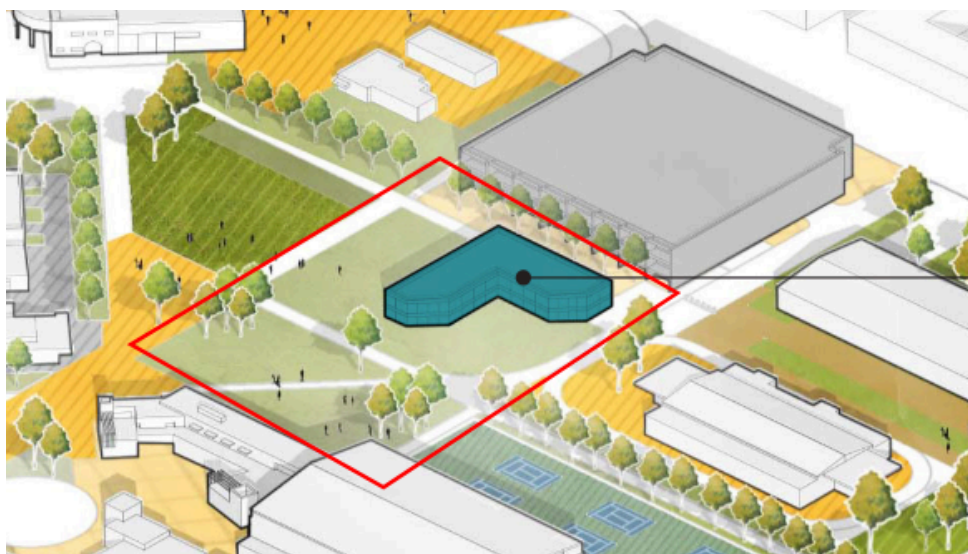
Activity	Target Completion
Design	Fall 2026
DSA & FAA Agency Review	Summer 2027
Construction of Aviation Instructional Center	Summer 2028



# Early Education Center



- **Scope:** Replaces existing CDC to support growing demand for early childhood education
  - Includes interactive play areas, outdoor learning zones, and a secure drop-off area
  - Enhances campus connectivity with relocated roadways, new landscaping, pathways, and signage
- Swing space needs are not anticipated for this project.
- Programming began at the end of September 2025.
- Site logistics, such as parking, to be discussed during the design phase.



Activity	Target Completion
Design Phase 1: Make Ready Road Work & Utilities	Fall 2026
Design Phase 2: New Early Education Center	Winter 2026-2027
DSA Agency Review (Make Ready Road Work & Utilities)	Fall 2026
DSA Agency Review (New Early Education Center)	Summer 2027
Construction Phase 1: Make Ready Road Work & Utilities	Winter 2027-2028
Construction Phase 2: New Early Education Center	Fall 2028
Construction Phase 2: Demo of Existing Child Development Center	Summer 2029

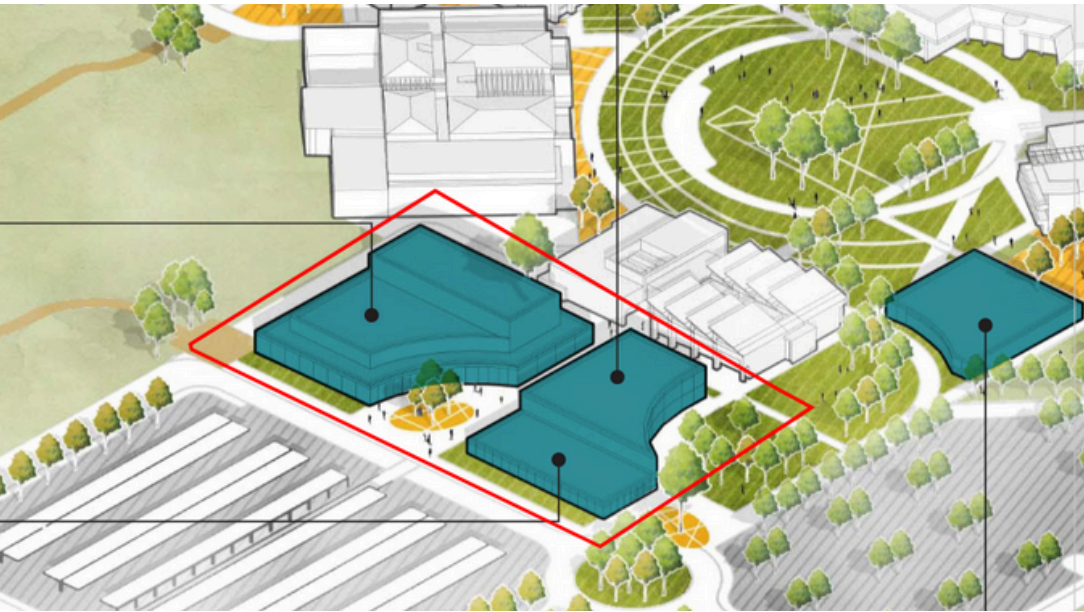


# Performing Arts Center & English/Gallery Building



- **Scope:**
  - It will replace an outdated lecture hall with classrooms, writing labs, multimedia studios, and a public gallery
  - A stagecraft and performance venue will include a large lecture hall, advanced AV systems, and flexible event space for both academic programs and community events
  - The project also features major site improvements and includes demolition of part of Lot 2
  - Once complete, this facility will serve as a cultural gateway to the campus
- Swing space needs are not anticipated for this project.
- Programming began at the end of September 2025.
- Site logistics such as parking to be discussed during the design phase

Activity	Target Completion
Design	Winter 2026-2027
DSA Agency Review	Fall 2027
Construction of New Performing Arts Center & English/Gallery Building	Summer 2030





# Capital Improvement Projects



System Type	Building(s)	Project(s)	Bidding Timeframe	Estimated Budget
BLDG	Multiple	Roof penetrations, roof seal, gutter seal (M,H,S5,T1)	3/6/26-4/9/26	\$220k up to \$1 Mil
BLDG	Multiple	Deck replacement at all three (3) pools and replaster competitive	10/6/26-11/9/26	>\$1 Mil
HVAC	S6	Mechanical refurbishment & HHW and COW coil, VAV	5/16/26-6/16/26	<\$500k
HVAC	C1	Replace HVAC RTU and exhaust fan	5/16/26-6/16/26	>\$1 Mil
HVAC	A-200	Miramar - Building A-200 (Police Academy MAT room) HVAC replacement	<b>Now</b>	\$220k up to \$500k
BLDG	Site	Paint exterior acorn and hat light poles	5/8/26-6/8/26	\$220k up to \$1 Mil
Electrical	Multiple	Lighting inverter batteries	<b>Now</b>	>\$1 Mil
Equip	G3 & G4	Replace rolling gate including exterior keypad, overhead roll-up doors, pedestrian gates, sally port	4/5/26-5/5/26	>\$1 Mil
Electrical	Multiple	Upgrade lighting to LED	5/2/25-6/2/26	>\$1 Mil
BLDG	A-200	Building A200 - plumbing upgrades	5/5/26-6/5/26	\$220k up to \$1 Mil
HVAC	Data Center	MDF/IDF room renovations	7/15/26-8/15/26	>\$1 Mil
Equip	Multiple	Fire alarm system components replacement & intrusion alarm	8/18/26-9/18/26	>\$1 Mil
BLDG	J5	Fieldhouse J-500 - interior upgrades	6/5/26-7/5/26	\$220k up to \$1 Mil
Equip	Multiple	Replace reclaimed water system (want to re-pipe for potable water)	7/8/26-8/8/26	\$220k up to \$1 Mil



# Measure HH Communication



- Project Profiles
  - Updated monthly and available to the public. These can be accessed through the SDCCD Website:  
[https://www.sdccd.edu/departments/operations/measurehh/project\\_profiles.aspx](https://www.sdccd.edu/departments/operations/measurehh/project_profiles.aspx)
- Newsletters
  - Newsletters will continue to be distributed on a monthly basis.

DCCD MEASURE HH BOND PROGRAM PROJECT PROFILE— MIRAMAR COLLEGE PERFORMING ARTS CENTER & ENGLISH/GALLERY BLDG — HH-R-003-00

**Project Overview**

Current Status /Phase	Procurement
Construction Type	New Construction & Demo
Gross Square Footage	98,000 SF
Revision of State Architect	Yes
Construction Method	Progressive Design-Build
Contract Start Date	September 11, 2025
Contract Expiration Date	TBD

**Project Financials**

Funded By	Measure HH
-----------	------------

**Project Teams**

Landscape Architect	TBD
Structural Engineer	TBD
Electrical Engineer	TBD
Mechanical Engineer	TBD
CCD Project Manager	Sam Garcia (Kitchell)
Construction Manager	Steve Evanco
QA Inspector	TBD
Contractor	TBD

**Project Detail**

Campus Coordinates	Miramar College 32°54'36.83"N 117° 7'15.71"W
--------------------	---

**Project Schedule**

Programming & Planning	Design & DSA Approval	Construction Completion	FFE & Move-In
Fall 2025/Spring 2026	Fall 2027	Winter 2030	Spring/Summer 2030

**Project Insight**

Project is currently in the RFQ/P Phase


- 6/5/25: RFQ/P Published
- 7/16/25: RFQ/P Submission Deadline
- 8/25/25: Issuance of Notice of Intent to Award
- 9/11/25: Board Approval
- 9/17/25-9/30/25: Project Kickoff Meeting
- Fall 2025: Start of Programming & Design

**Project Features**

The Miramar College Performing Arts Center and English Gallery Building Project will add approximately 64,000 new construction, including site preparation, utility, extensive exterior improvements such as landscaping, accessible pathways, and signage. This new facility will support academic programs currently lacking dedicated space within the Humanities, and will replace an aging lecture hall with modern classrooms, writing labs, multi-media studios, editing suites, and a public gallery. The project includes a stagecraft, multimedia, and performance space featuring a large lecture hall, advanced AV systems, a lecture hall, and a public gallery. The building will be located along Black Mountain Road, the building will be a welcoming gateway to campus and a cultural asset to the surrounding community. Demolition of the southeast corner of Lot 2 is also included in the scope.

**Project Site Plan**

\*Renderings coming soon



SDCCD MIRAMAR COLLEGE PERFORMING ARTS CENTER & ENGLISH/GALLERY BLDG — HH-R-003-003 PROJEC

Scan to visit the Measure HH Website!





# Systems Thinking...





# Systems Thinking...

- Implementation of Guided Pathways
- Establishment of the Lead Office
- Expansion of Basic Needs Services
- Expansion of Student Mental Health Services
- Expansion of Counseling/Advising Services
- Implementation of Student Support Programs for Affinity Groups
- Implementation the Bachelor's Degree Program
- Implementation of College Hour
- Organizational Restructuring of Student Services and Instructional Divisions





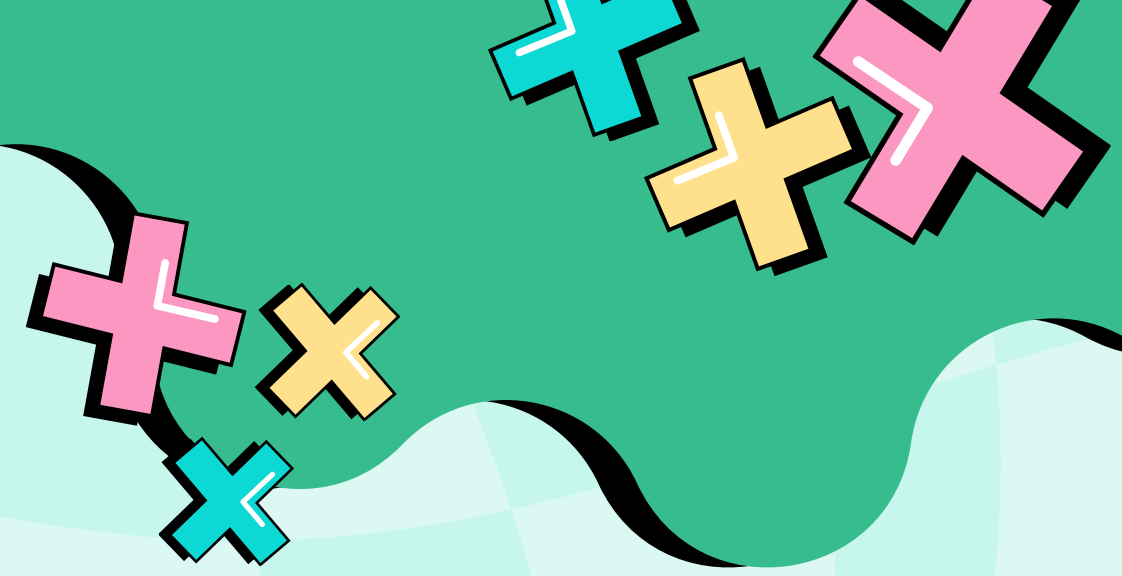
# COLLEGE HOUR

**Campus Connections and Community**

**CHERYL BARNARD, DEAN OF STUDENT AFFAIRS**  
**JOSEPH HANKINSON, STUDENT LIFE OFFICER**



# College Hour as a Student Success Practice



National research reinforces that student success is influenced by how institutions support students' persistence and engagement, both inside and outside the classroom.





# College Hour supports student success by:

- Creating structured opportunities for engagement during the academic day
- Strengthening connection to faculty, staff, and peers
- Increasing awareness of academic pathways and support resources

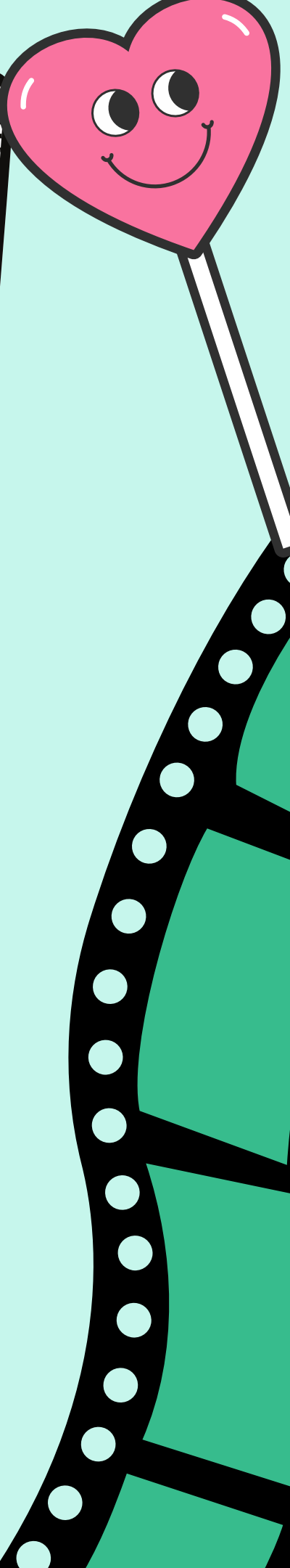


Center for Community College Student Engagement (CCCSE)  
Why Focus on Student Engagement?; Tinto, V. (2012), Completing College



# Contributions to Persistence and Completion


- Increasing students' sense of institutional connection
- Encouraging early help-seeking and resource utilization
- Reducing participation barriers for working, commuter, and first-generation students
- Normalizing engagement as part of the academic experience








# College Hour Data



Academic Year	# of Departments	# of Participants
22-23	22	8,424
23-24	18	10,235
24-25	15	11,944
Fall 2025	18	8,883



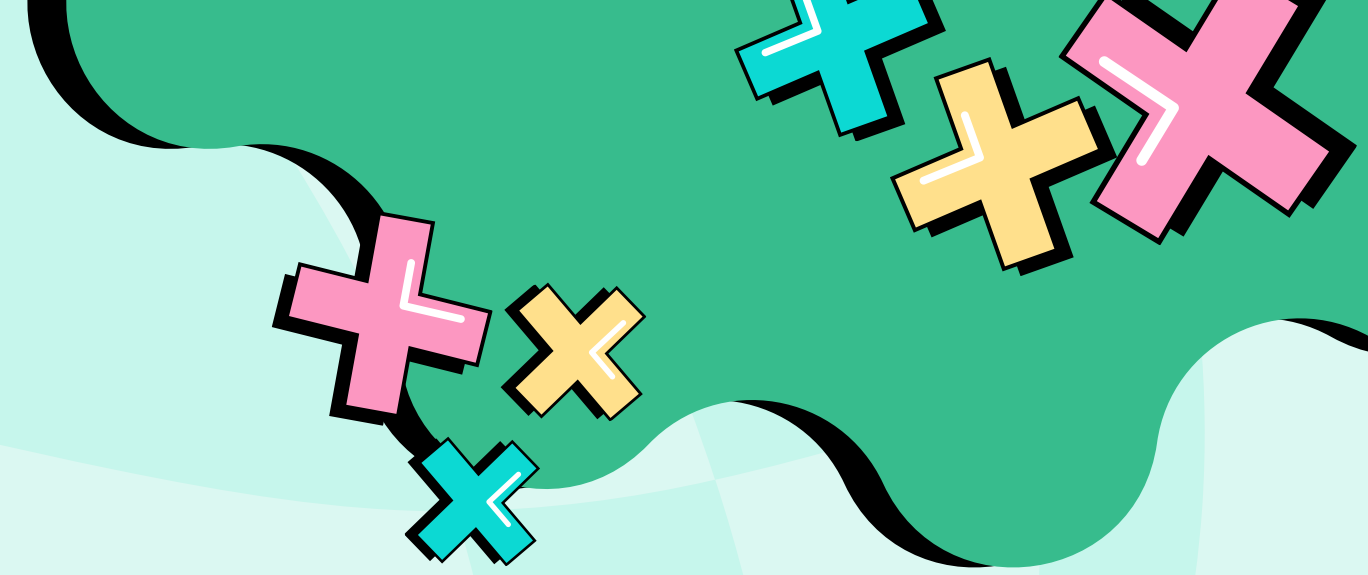
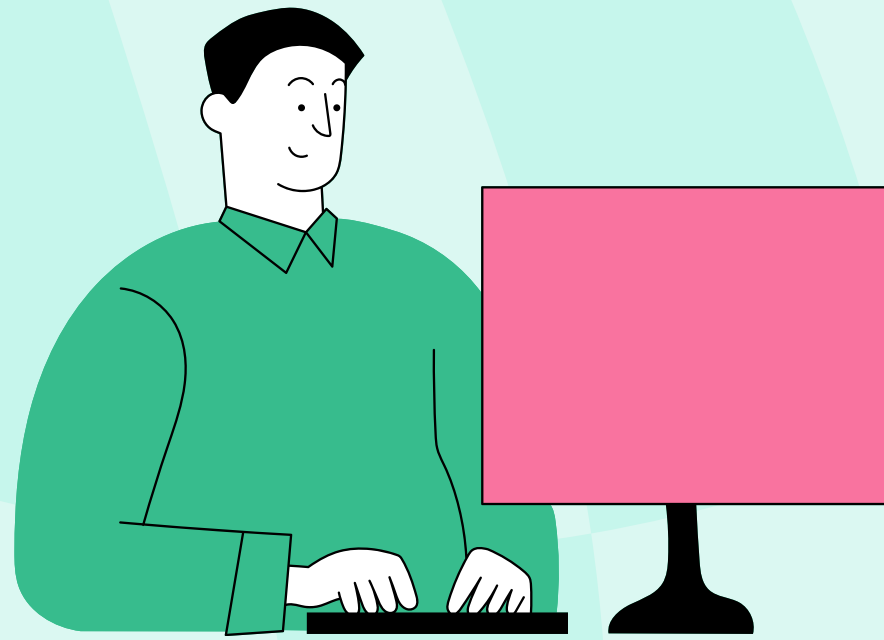




**Passports = Interaction + Data + Food**







# Synopsis of Student Feedback from Five events

**Welcome Back Resource Fair**

**Club Rush**

**Fall Fest**

**Filipino History Month**

**Chill with Us**



**Do you feel more  
connected to the campus  
and community after this  
event?**

**N=761**

**Yes**

**88%**

**Maybe**

**7.2%**

**No**

**3.3%**

**No Answer**

**1.5%**



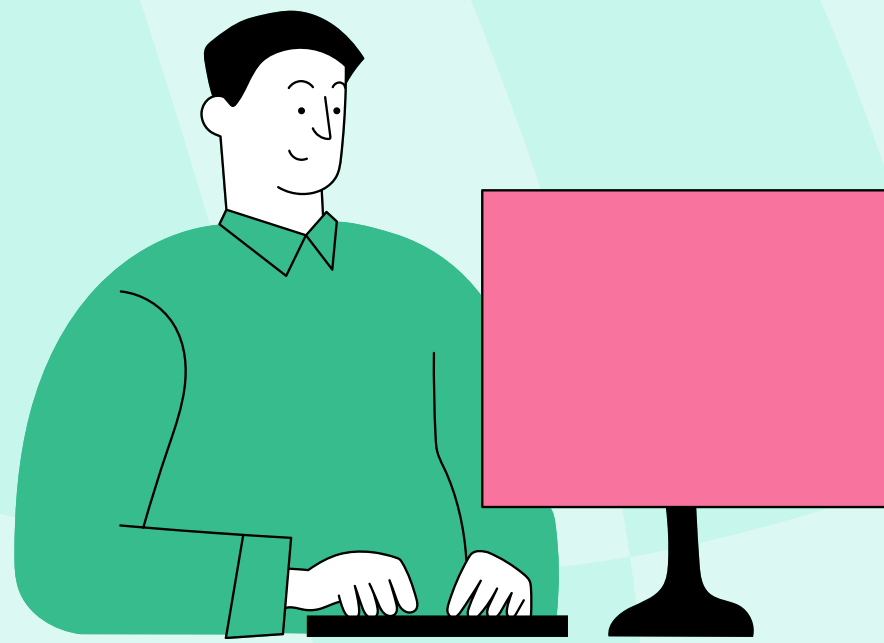


After participating in today’s event, how likely are you to join a club?

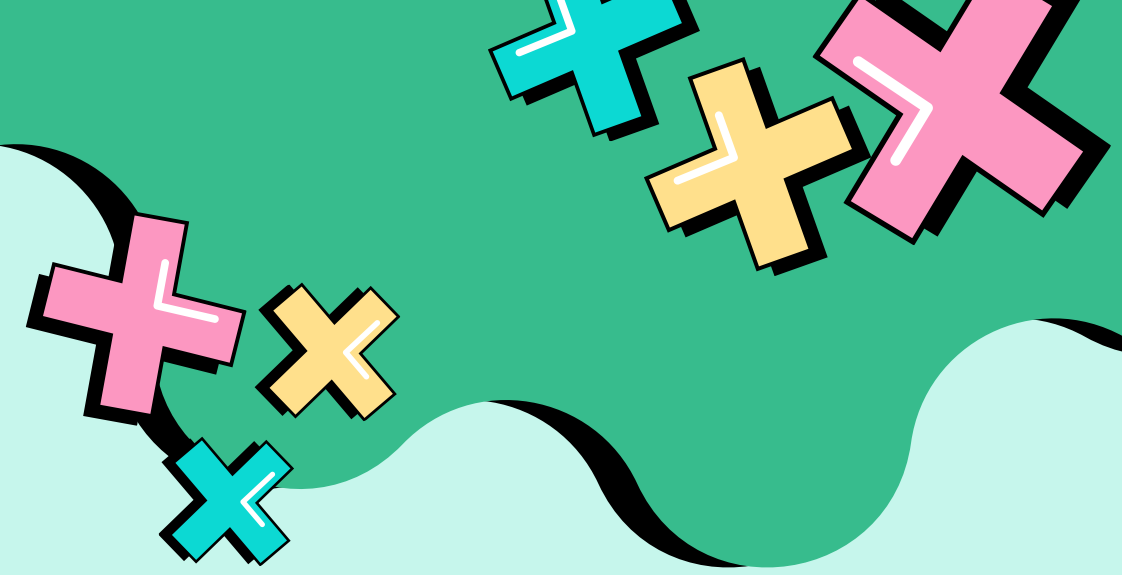
Extremely Likely	55.8%
Somewhat Likely	14.9%
Neutral	20.4%
Extremely Not Likely	6.1%
Already Involved in a Club	2.8%







# Fall Fest



**Do you feel more informed after participating in this event?**

**Yes**

**94.54%**

**Somewhat**

**.9%**

**No**

**4.1%**

**N=220**



**Did you meet new people  
or make useful campus  
connections during this  
event?**

# **Chill With Us**

**Yes**

**51.4%**

**Somewhat**

**27.7%**

**No**

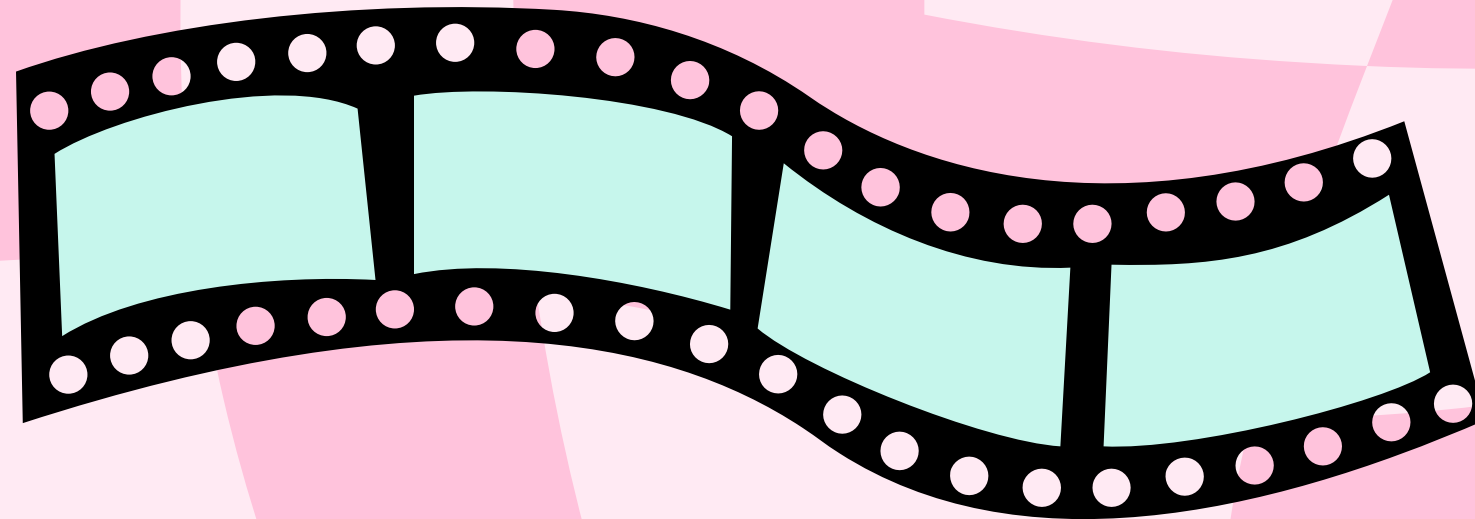
**20.9%**

**N=220**



# OVERALL FINDINGS

- Increased connection to campus
- Greater awareness of resources
- Stronger motivation to join clubs
- Meaningful opportunities to meet new people







# **MOVING FORWARD**

- **Shared student feedback questions**
- **All Events added to College Calendar**
- **Completion of the College Hour Report**





# MENTAL HEALTH AT MIRAMAR

Supporting Students  
&  
Strengthening Mental Health

---


CHERYL BARNARD, DEAN OF STUDENT AFFAIRS  
MARIAN EDELBROCK, MENTAL HEALTH COUNSELOR







# **The traditional delivery of Mental Health Services was limiting the breadth of who we served**

- Reactive - waiting for the students to make appointments
  - Crisis Response focused
  - Preventative education was fit-in during “awareness months”
  - Traditional Assessments we used focused on “warning signs” not prevention strategies
- 



# COVID-19: A DISRUPTER THAT CREATED OPPORTUNITY

## The Disruption

- Changed how students learn, connect, and cope
- Became impossible to ignore the mental health and well-being gaps that emerged





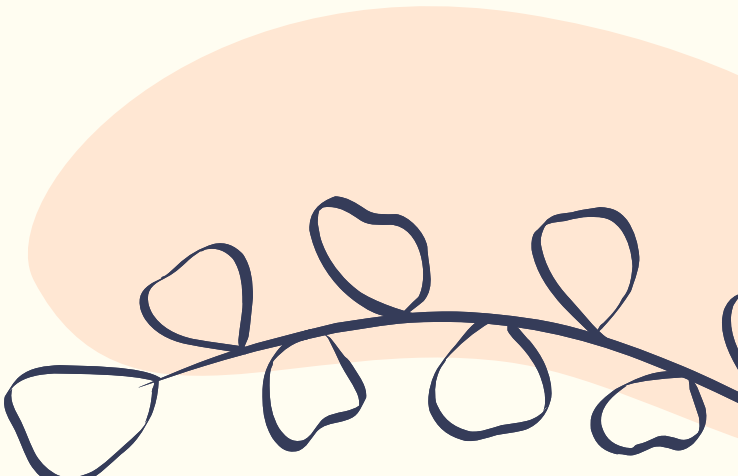
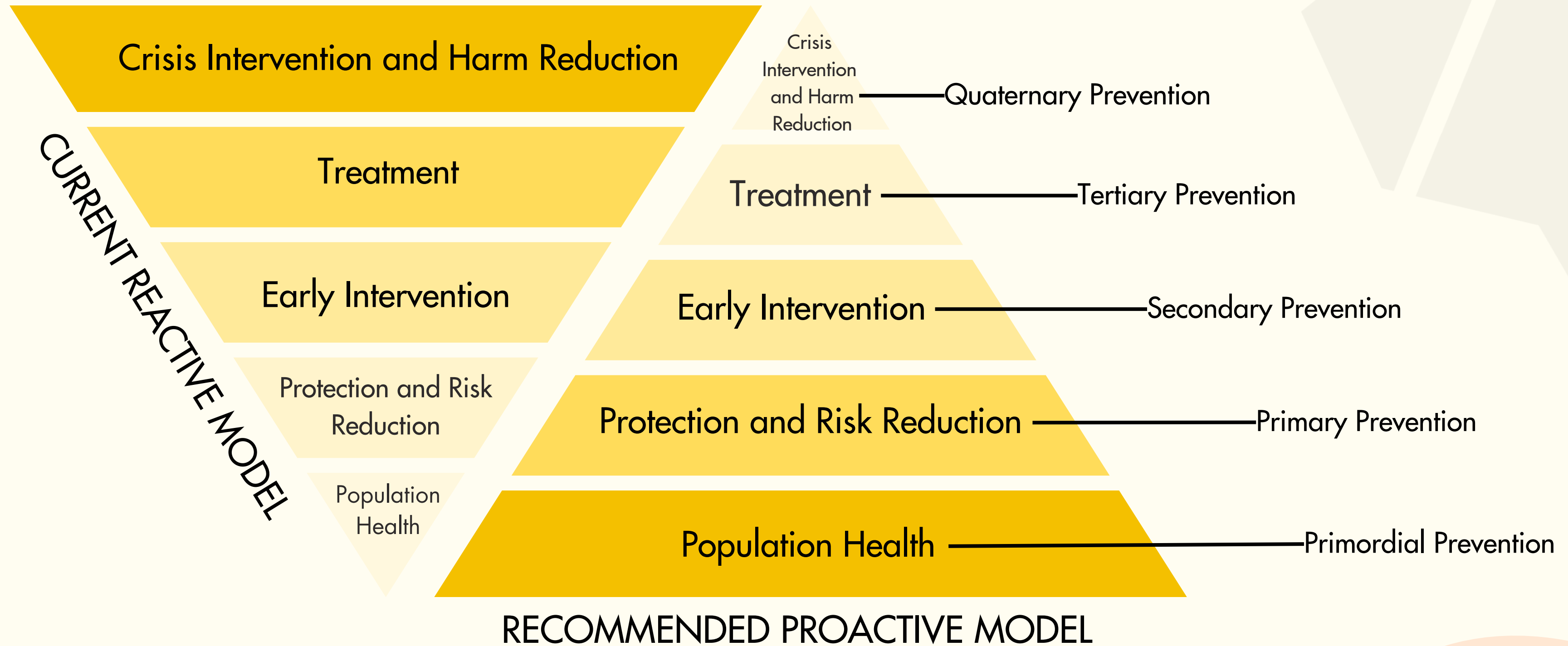
# COVID-19: A DISRUPTER THAT CREATED OPPORTUNITY



## The Opportunity

- Forced us to pause and focus differently
- Shifted our attention from crisis response to prevention and early insight
- We used emerging research to expand outreach around wellness, stress reduction, and mental health









# RESEARCH SHOWS THAT MINDFULNESS IMPROVES ACADEMIC SUCCESS



- Improved learning and performance:
  - Students with higher mindfulness demonstrate stronger academic achievement, including better grades, focus, working memory, and executive functioning.
- Reduced stress and increased persistence:
  - Mindfulness buffers the negative effects of academic stress, improves coping and emotion regulation, and supports persistence—especially important for community college students balancing multiple demands.
- Stronger mental health and engagement:
  - Mindfulness training significantly reduces stress, anxiety, and psychological distress, creating conditions that support sustained academic engagement and success.

(e.g., Bamber & Kraenzle Schneider, 2016; NIH reviews)





# EGG CHAIRS

Immersive relaxation experience using Bluetooth to connect to interior speakers playing meditations, music, mindfulness trainings and more.

- Five Located across campus at:
  - Health Center
  - DSPS
  - Veterans Center
  - Library (2)





# Headspace

- A wellness and mindfulness app that includes:
  - Guided meditation
  - Soundscapes
  - Music
  - Courses
  - Educational videos
  - Sleep stories
  - Guided physical movements



- Currently enrolled staff and students: 525
- Total Headspace minutes: 8,251
- Top Course: Managing Anxiety
- Top Non-course: Deep Rest





# Mindfulness Events and Programs on our campus

- Drumming
- Miniature Horses for managing exam stress
- Yoga on the Quad
- Mindfulness Crafts during College Hour
- Send Silence Packing
- Laugh With Us Workshop
- Topic based workshops

## 2025 Calendar Year

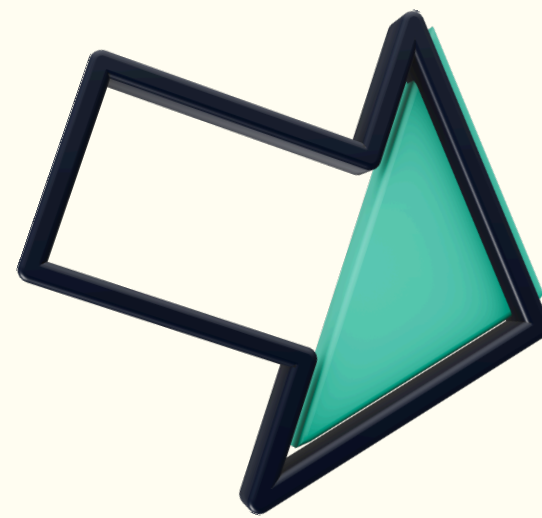
- 89 events & programs
- 3,000 plus student participants





## How do we know that these programs are working?

- Positive Faculty and student feedback
- Increased attendance at events
- Increased requests for more programs




MindArchHealth



# *What is* **MINDARCH**



## MindArch Automation Pathway (MAP)

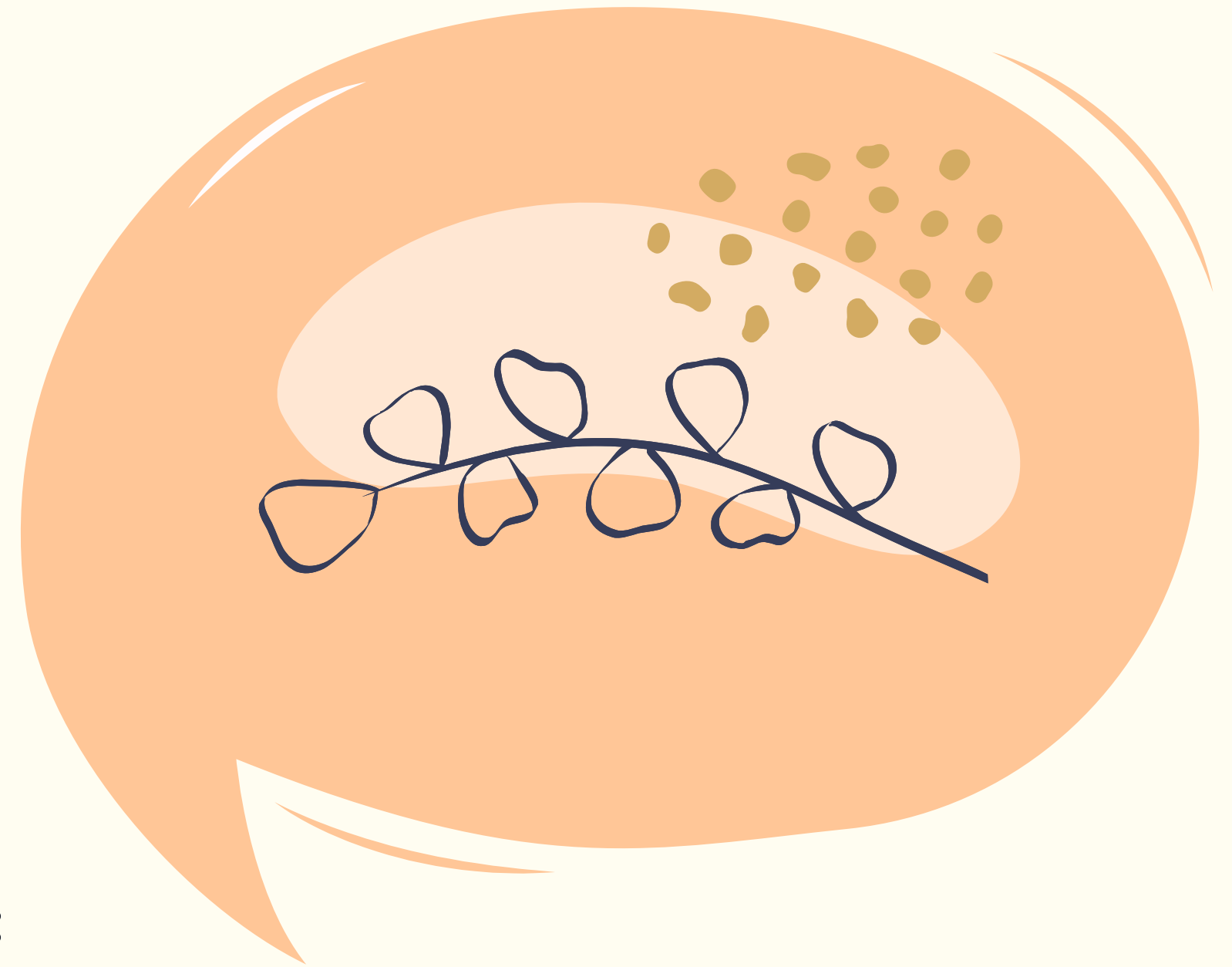
- AI-driven, strength-based wellbeing assessment
  - Built on the 5-Elements of Systemic Wellbeing
    - (validated through 2,000+ studies)
  - Provides individualized strength based mental health insights to students through a screening tool
  - Provides the Campus with data for strategic planning
- 



# WHAT MAP DOES FOR STUDENTS

**A supportive, non-clinical tool that helps students:**

- Reflect on strengths, belonging, stability, and support systems
- Identify conditions that foster resilience and success
- Feel understood without stigma or diagnostic framing
- Engage with campus resources earlier and more meaningfully

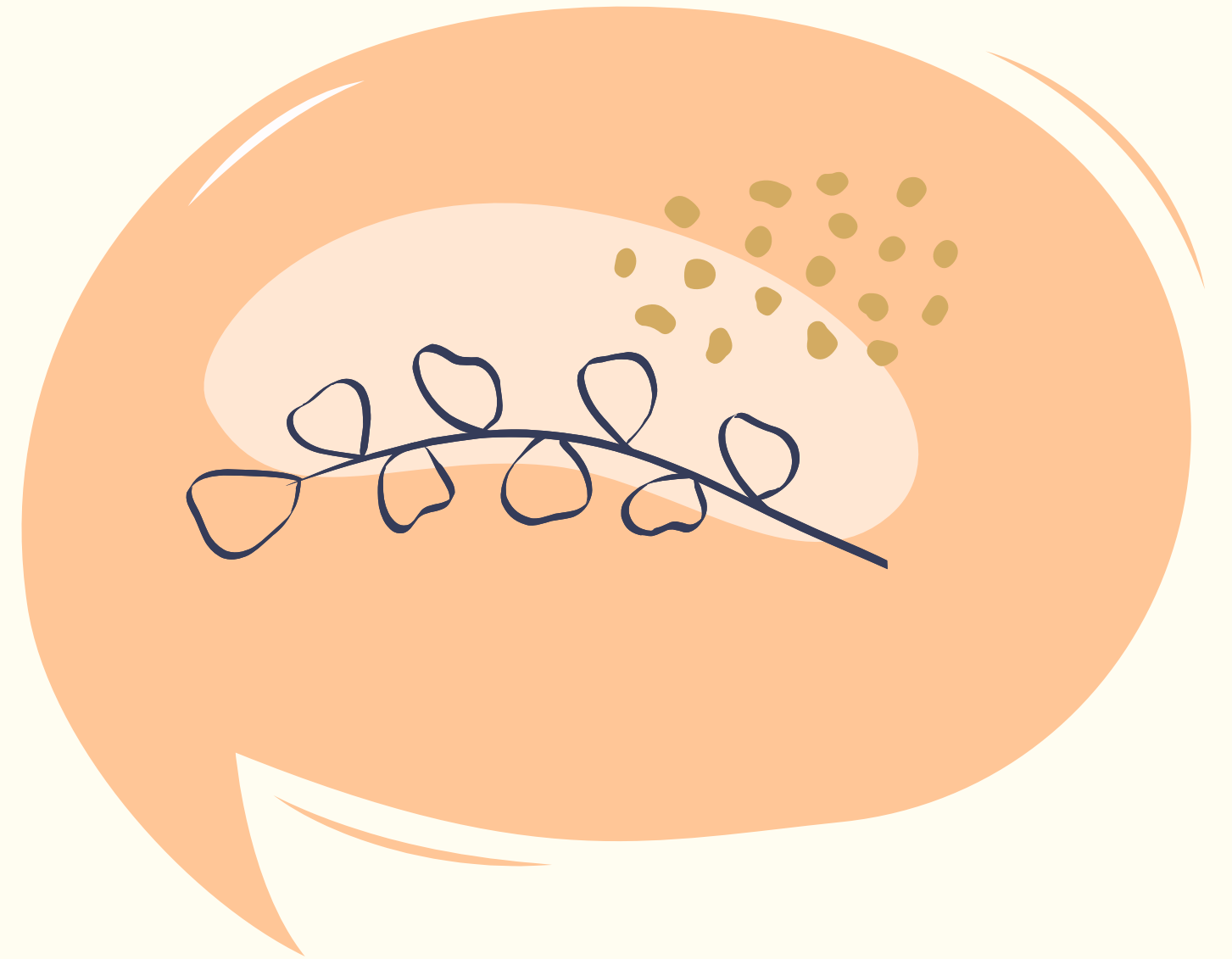


# WHAT MAP DOES FOR THE CAMPUS

MAP uses AI to turn complex wellbeing data into actionable insights by identifying patterns across multiple data sources:

- Social determinants of health
- Wellbeing survey (5-Elements model)
- Appreciative Inquiry narratives

It then uses AI to look for relationships between these factors—something humans can't do at scale.





# PREPARED A RISK ASSESSMENT REPORT

## Identified Societal Vulnerabilities using data from:

- National Public Health & Social Determinants from CDC, HUD, HRSA)
- Localized zip-code specific data

**Lack of social/emotional support**

**Greater self-report of fair or poor health status**

**Greater Housing/Food Insecurity**

**Frequent Mental Distress**

# COMPILED APPRECIATIVE NARRATIVE SUMMARIES

Appreciative Inquiry  
Narratives  
From  
Stakeholders

Contextual Analysis

Stakeholder Analysis

Reflective Analysis by stakeholders



# COMPILED AGGREGATE STUDENT SURVEY RESULTS

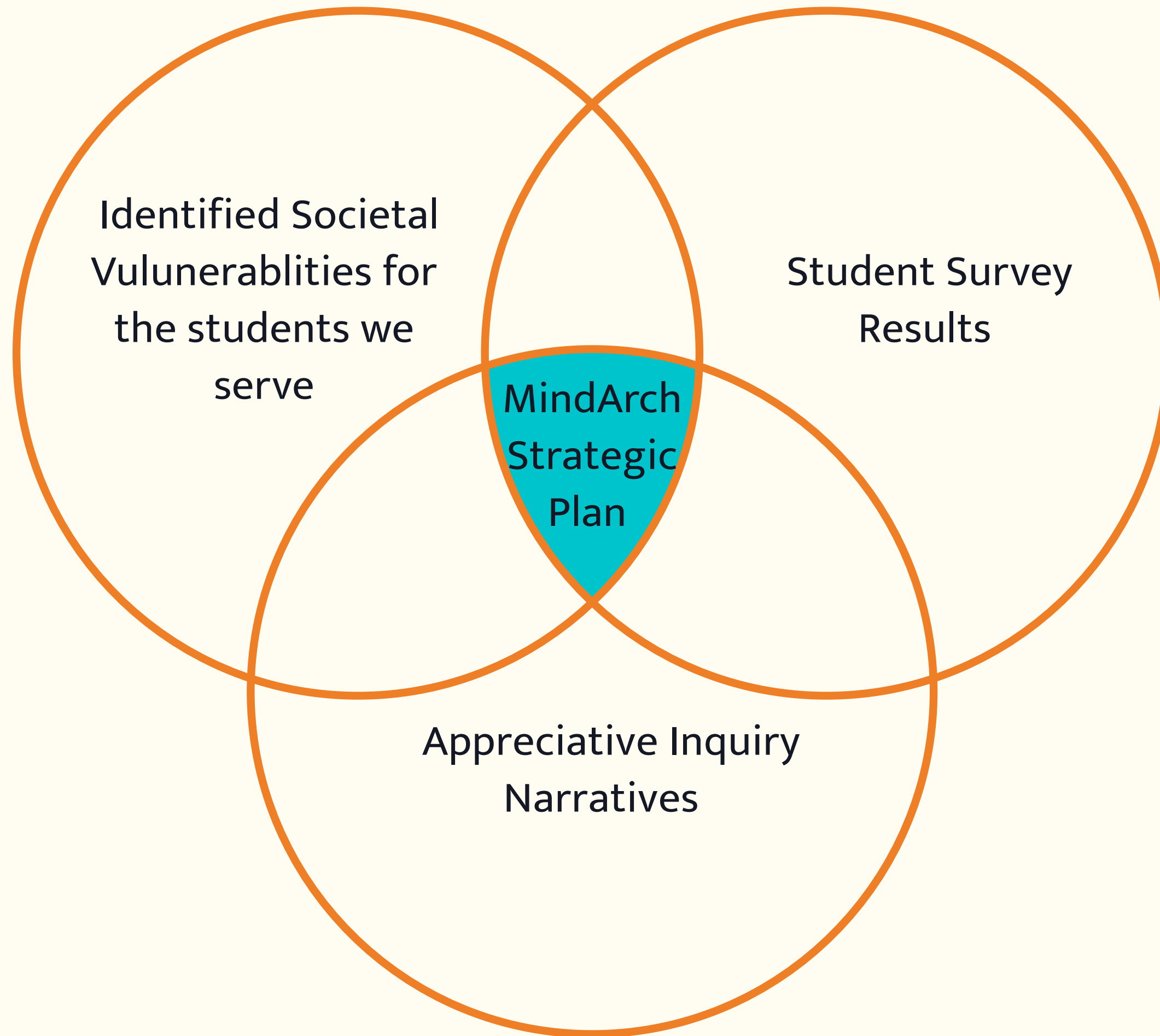
Student Survey Results

Increase Relatability

Help students see their  
challenges as normal and  
manageable

Strengthen Personal Empowerment

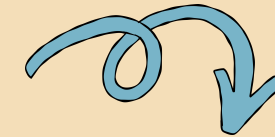
Help students feel capable and supported





# STRATEGIC DIRECTION

## Increase Relatability\_



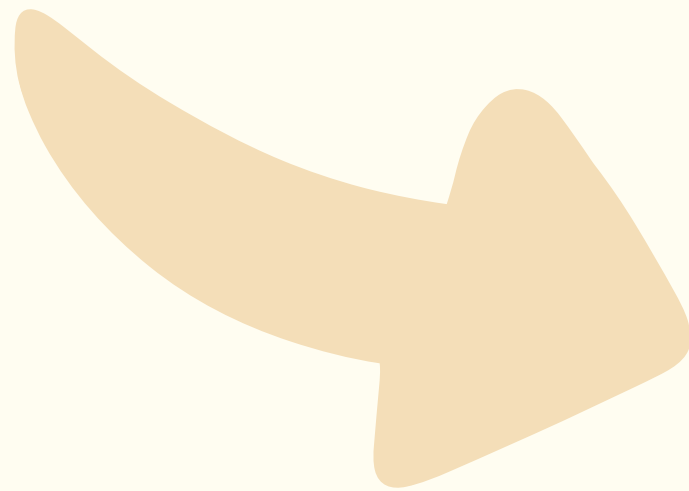
Help students see their challenges as normal  
and manageable

## Strengthen Personal Empowerment



Help students feel capable and supported

# Strategic Suggestions



1

Streamline how students find help

2

Reduce feelings of bureaucracy or exclusion with pop ups across campus

3

Annual Stress Point Review

4

Syllabus Help-Seeking Statement



# Next Steps



1

Using the data to plan programs & workshops

2

Using MindArch as the foundation for our work supported through the Lotus Grant from San Diego Foundation

3

Using the results as a way to open dialogues across campus on how other areas can assist in strengthening the mental health of our students



# LEAD OFFICE &

K A L E I D O S C O P E

---



# LEAD

Leading for Equity, Antiracism & Diversity

- LEAD Team
- 25-28 Student Equity Plan
- Kaleidoscope
- Resource Centers & Programs
  - Black Excellence
  - Latinx/HSI Servingness
  - NASSSP - Native Programs
  - PEARL / AANHPI & Lotus Fund
  - Pride Programs



# LEAD Team



**Maribel Flores**  
Administrative  
Technician (1.0)



**Nessa Julian, Ed.D.**  
Dean of LEAD & Equity (1.0)



**Irene Encarnacion**  
Project Analyst (PT)

*Mission: The Leading Equity, Anti-Racism, and Diversity (LEAD) Office is dedicated to fostering an inclusive campus culture that advances social and racial equity through the integration of culturally responsive practices across the workplace, classrooms, and support programs and services. By embedding equity into all aspects of the campus experience—from student engagement both inside and outside the classroom to the recruitment, retention, and professional development of employees—LEAD works to create an environment where students succeed and employees thrive.*

I-122  
619-388-7897  
miramarlead@sdccd.edu  
Instagram: miramarlead  
<https://sdmiramar.edu/services/lead>



**Carmen Carrasquillo, Ph.D.**  
LEAD Faculty  
Coordinator (0.4)



**Jose Enriquez, MA**  
Counselor (0.6)



**Laura Marin, Ed.D.**  
Counselor (0.6)



**Vacant**  
NASSSP Director (1.0)



**MaryAnn Guevarra, MA**  
PEARL Counselor/  
Coordinator (0.4)



**Kio Truong, MA**  
Lotus Counselor/  
Coordinator (0.4)



**Jamie Webb, RN/AMFT**  
Mental Health  
Counselor (M)



**Mona Patel, MS**  
Career Counselor (TH)



**Ashley McCullough**  
Project Analyst (PT)



**Raquel Rivas**  
Project Analyst (PT)



**Lucia Napolez**  
Project Analyst (PT)



**Stephanie Perezgil**  
Project Analyst (PT)



**Brianna Carnigan**  
Project Assistant (PT)



**Jasmine Ancheta**  
Project Asalyst (PT)



**Tony Pasqualetto**  
Project Assistant (PT)



**JennaSee Ayersman**  
Project Assistant (PT)



SAN DIEGO MIRAMAR COLLEGE  
*Pearl* Program



# 2025 - 2028 STUDENT EQUITY PLAN

Implementation with Intention



## 2025-2028 STUDENT EQUITY PLAN



[www.sdmiramar.edu](http://www.sdmiramar.edu)

### SUCCESSFUL ENROLLMENT

- Collaboration with the American Indian Recruitment (AIR) Program
- Collaboration with Outreach, Promise & Retention efforts

### TRANSFER MATH & ENGLISH

- Paired courses (ENGL C1000/1 & Ethnic Studies (AANHPI))
- Future Puente & Umoja Programs
- Counseling support & academic pathways

### PERSISTENCE

- Creation of affinity-based resource centers
- Mentorship with ERGs & leadership opportunities to attend conferences (APAHE, A2MEND, NASSSP)

### COMPLETION

- CREATE Professional Development program
- Student success workshops focusing on the student journey

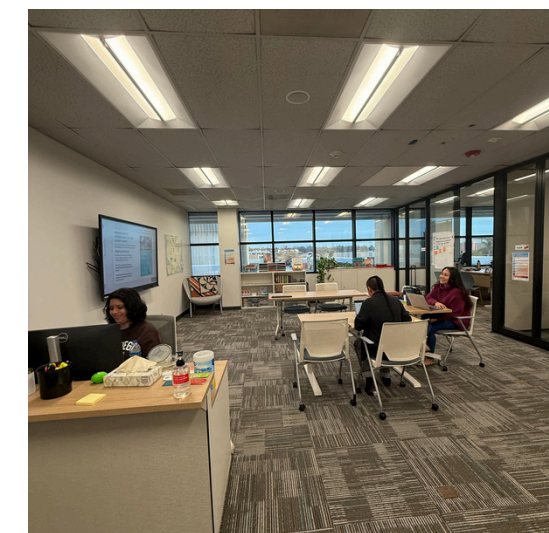
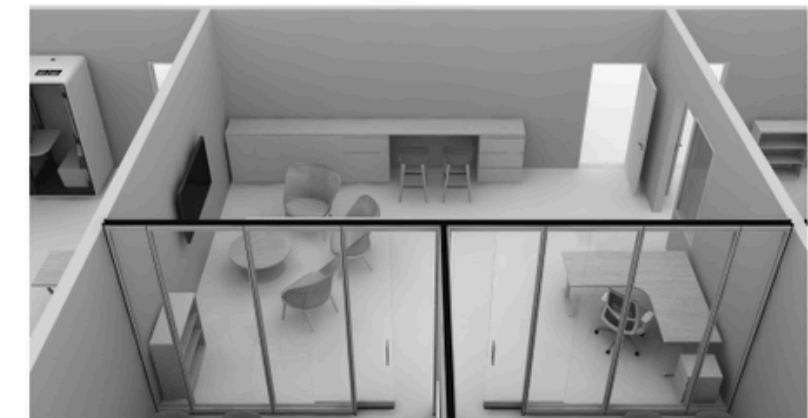
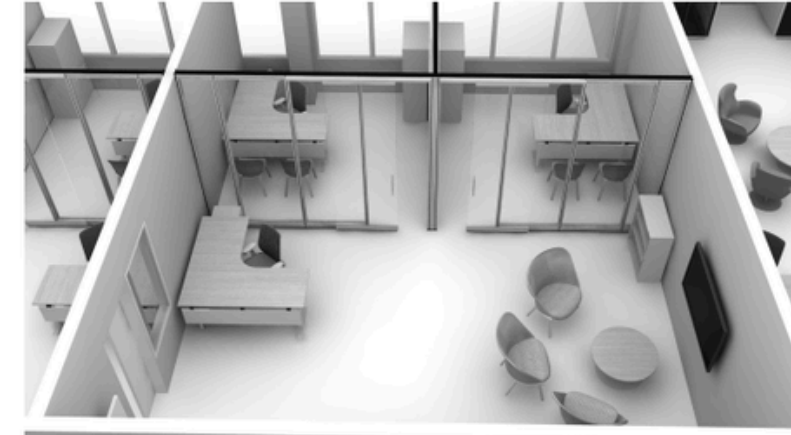
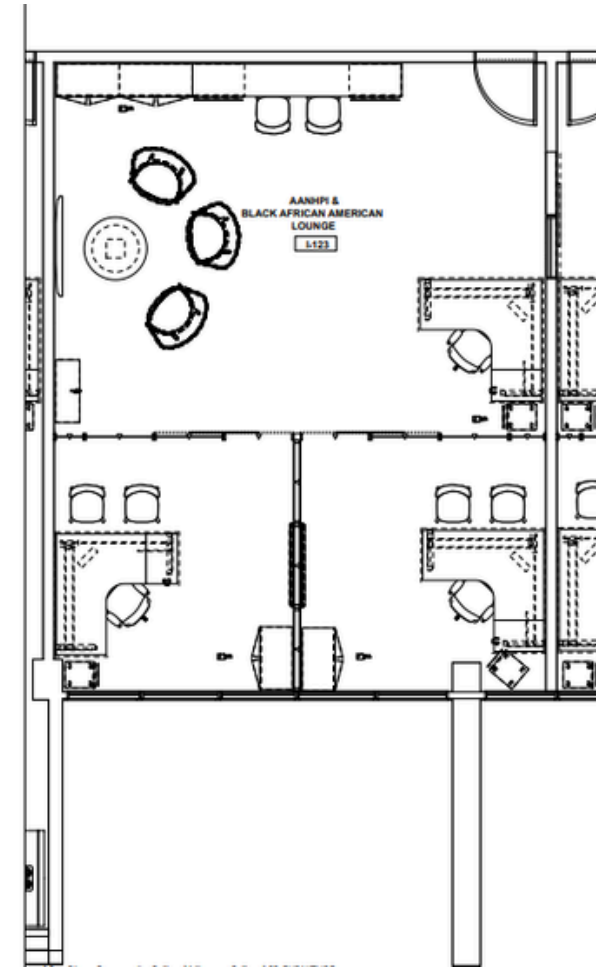
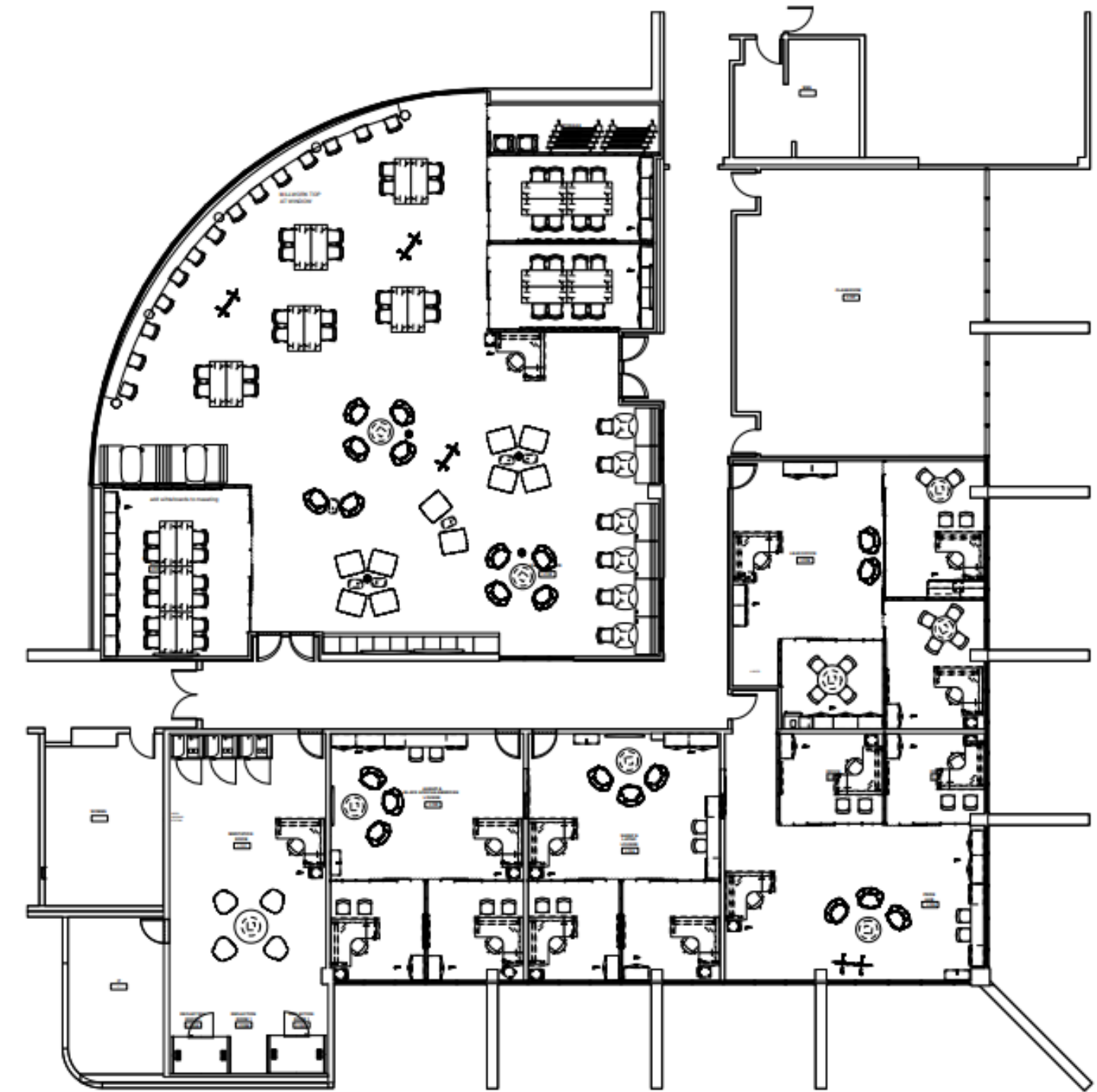
### TRANSFER TO A 4-YEAR

- Student-focused Transfer Conference & Transfer Center Starter Packets
- University visits (UCLA, UCSD)



# KALEIDOSCOPE RESOURCE CENTERS

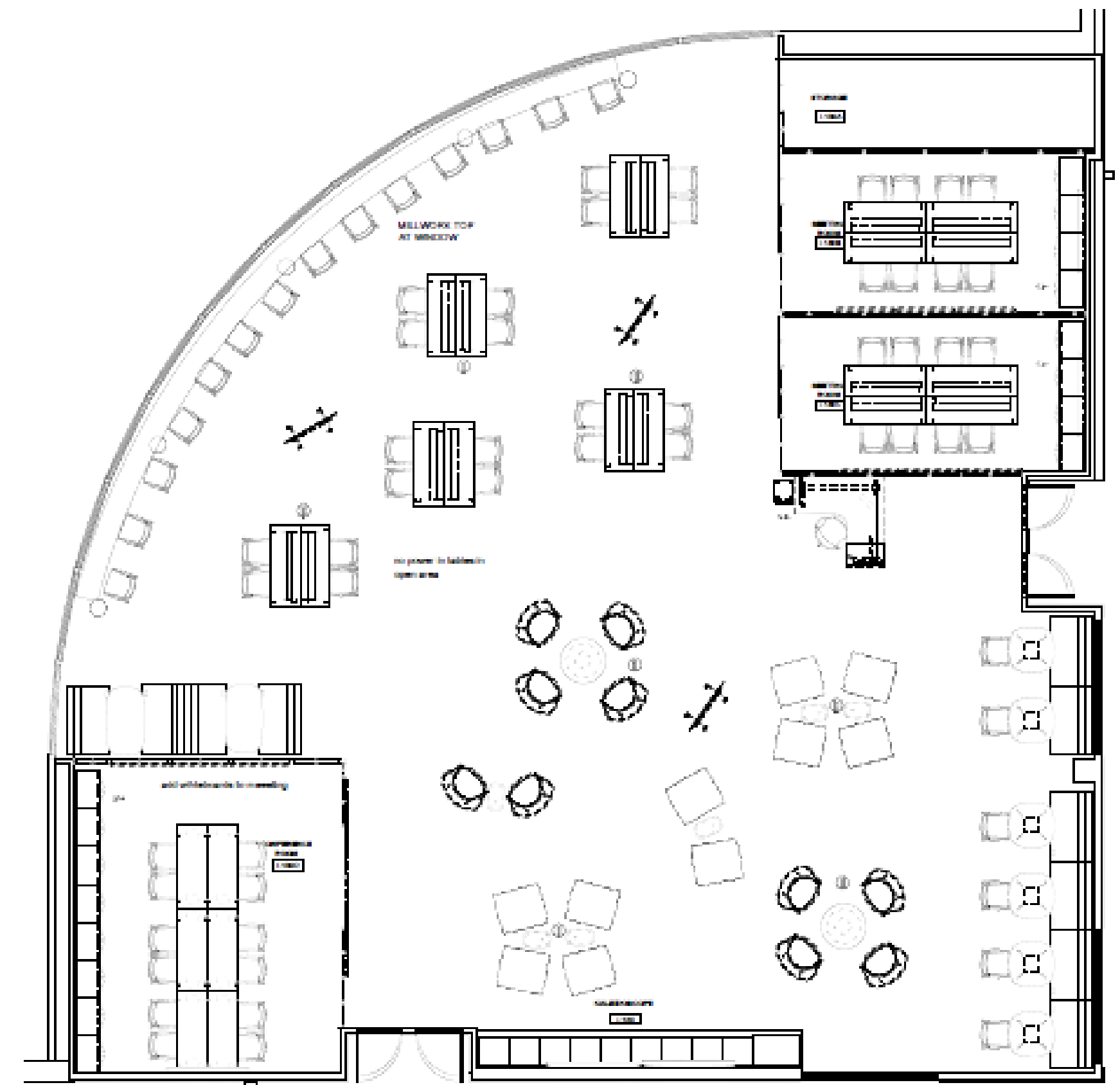
Monday - Thursday 10:00 AM - 2:00 PM





# KALEIDOSCOPE STUDENT LOUNGE

Anticipated Opening: April 2026



# RESOURCE CENTERS

These spaces are housed on the Second Floor of the I-Building (English) and are part of the Kaleidoscope Spaces. Students have access to:

- Academic Counselors
- Career Counselors
- Mental Health & Wellness Counselors
- Student Success Workshops
- Study Space
- Library/Resources
- Tutoring (Future)
- Programs/Events
- Community Connections
- Snacks, Swag, and Supplies



I-126

NASSP

Native Resource Center



I-125

LGBTQIA

Pride Resource Center



I-124

HSI/Latinx

Latinx Resource Center



I-124

Black & African American  
Black Resource Center



I-123

AANHPI

PEARL Resource Center



# BLACK RESOURCE CENTER

BRC: Building Community & Celebrating Black Excellence

## About the Center

- The Black Resource Center is a welcoming space that supports Black identifying students and allies through connection, resources, and community building. The BRC promotes student success by supporting students academically, socially, and personally throughout their time at Miramar College, while also working to reduce barriers to belonging, access, and awareness of campus resources through intentional engagement and referral.

## What We Offer

- Community space for students to connect and gather
- Academic counseling support and referrals
- Career readiness workshops and skill building opportunities
- Leadership and advisory opportunities for students
- Campus resource navigation and referrals
- Events that celebrate culture, identity, and community

## Programming & Engagement

- Welcome and community building events
- Cultural celebrations and campus collaborations
- Student advisory group opportunities
- Career and academic focused workshops
- Outreach and tabling to connect with students where they are





# BLACK RESOURCE CENTER

BRC: Building Community & Celebrating Black Excellence

## Highlights from Fall 2025

- Collaborated with Transfer Center on the first-ever HBCU workshop
  - Students learned about requirements needed
  - Learned about HBCU's
  - Learned about the California Community College partnership with 25+ HBCU's
- Hosted a Black Excellence Resource Center Opening

## Focus for Spring 2026

- Black History Month Events
- Prioritizing early and consistent student connection, not one-time interactions
- Increasing student awareness of the Black Resource Center and available supports
- Creating multiple entry points for engagement through outreach, events, and referrals
- Strengthening follow up and communication to encourage continued student involvement
- Building pathways for leadership and advisory participation
- Centering student feedback to inform programming, outreach, and resource development
- Supporting equity by reducing barriers to access and sense of belonging

## Upcoming Events

- Black History Month Spring Kickoff and community welcome event
- Career Readiness Workshop focused on resume building, skill identification, and cover letters
- Student Advisory Group interest and onboarding sessions
- Ongoing outreach and tabling to connect students to BRC resources
- Cultural and community based programming in collaboration with campus partners





# LATINX PROGRAMS

## About the Center

The LatinX Resource Center at Miramar College is committed to fostering a welcoming, culturally affirming space where LatinX students feel seen, supported, and empowered to succeed. Grounded in the HSI Servingness Framework, the Center focuses on intentional programming that promotes academic success, personal development, and a strong sense of belonging. Our work is rooted in community, culture, and care—supporting LatinX students not just to enroll, but to thrive.

## Highlights from Fall 2025

- Partnered with multiple campus programs to provide holistic, wraparound support for LatinX students.
- Event collaborations included HSI STEM Éxito, EOPS/CARE/NextUP & CalWORKs, Outreach & Promise, Veterans Services, DREAMer Resource Center, Mesa Program, Transfer Center and General Counseling.
- These partnerships strengthened academic support, transfer readiness, and student engagement, while reducing barriers to access.
- Coordinated referrals, shared events, and cross-promotion to ensure students were aware of and connected to available resources.

## Focus for Spring 2026

- Deepen our commitment to LatinX student success through intentional, culturally affirming programming grounded in the HSI Servingness Framework.
- Strengthen cross-campus collaboration by continuing to work closely with key departments to expand partnerships that holistically support students' academic, personal, and career goals.
- Increase visibility and awareness of the LatinX Resource Center through targeted outreach and promotion, ensuring students know who we are, where to find us, and how we can support them.

## Upcoming Events

- Raza Grad May 2026





# LATINX PROGRAMMING



## HSI Servingness Advisory

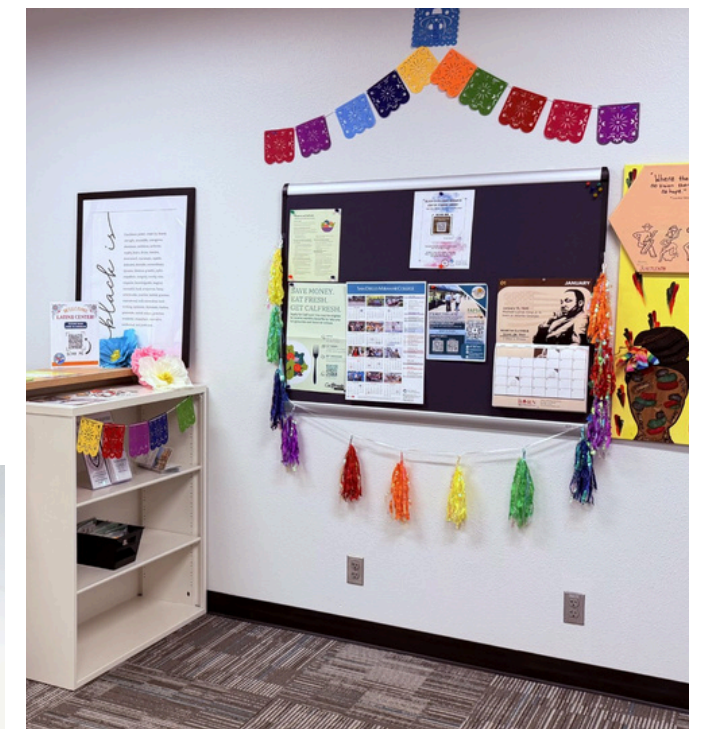
Planned and facilitated the first-ever HSI Servingness Advisory Retreat focused on advancing equity-minded practices at Miramar College.

Brought together faculty, staff, and administrators to reflect on servingness, share data, and develop actionable strategies to better support LatinX students.

Strengthened cross-department collaboration and reinforced Miramar's commitment to intentional HSI work beyond enrollment numbers.

Co-hosted a series of culturally affirming events designed to build community, increase resource awareness, and promote student belonging.

- Welcome Back Carne Asada
- LatinX Resources y Tostilocos
- Cafe y Consejeros
- LatinX Social





# NATIVE AMERICAN STUDENT SUCCESS PROGRAM



## About the Program

The Native American Student Success Program (NASSP) at Miramar College is a state-funded initiative established under Assembly Bill 183 and implemented across 20 California Community Colleges. The program supports American Indian and Alaskan Native students through culturally responsive services that promote access, retention and academic success and leadership development.

## Program Includes

- Financial Assistance and Scholarship Opportunities
- Leadership and Mentorship Opportunities
- Participate in Native Cultural Activities and Programs
- Create a Student Educational plan with NASSP counselor
- Native American Graduation Blanket Ceremony
- Support for Transfer to UC and CSU Application



@nassp.miramar



miramar-nassp@sdccd.edu



**Native Resource  
Center**  
I-Building, 2<sup>nd</sup> floor,  
Room 126



**AIR Banquet**



**Tribal Youth Court**



**Native Graduation**



**Flag Raising**



# NATIVE AMERICAN STUDENT SUCCESS PROGRAM

## Highlights from Fall 2025

Grand opening of the Native Resource Center located in the I-Building, 2<sup>nd</sup> floor, Room 126

Hosted Indigenous Peoples Day on October 19<sup>th</sup> 2025 at Miramar College with community

Strengthened partnerships with local tribal community organizations through outreach efforts with the Kumeyaay Nation & the Rincon Band of Luiseno Indians

Celebrated Native American Heritage Month with cultural programs

**NATIVE AMERICAN HISTORY MONTH**  
November 2025

Drop by the Native Resource Center, located on the 2<sup>nd</sup> floor of the I-Building, Room I-126, all throughout November during College Hour [12:30pm to 1:30pm], to learn about Native American history and culture in honor of Native American Heritage Month.

**WEEK 1: NOVEMBER 3 - 6**

College Hour 12:30pm - 1:30pm  
Native Resource Center I-126 (2<sup>nd</sup> Floor)

**DROP IN FOR TREATS & NATIVE AMERICAN HISTORY/CULTURE VIDEOS**

Drop by during College Hour on Monday, Tuesday, Wednesday, and Thursday to watch a series of videos highlighting Native American culture & history with us at the NRC. No need to stay the whole time, just drop by and learn!

**WEEK 2: NOVEMBER 10-13**

College Hour 12:30pm - 1:30pm  
Native Resource Center I-126 (2<sup>nd</sup> Floor)

**NATIVE AMERICANS & US MILITARY WEEK**

**Wednesday, Nov. 12<sup>th</sup>**  
Staff Sgt. Raymond, a National Guard servicemember who is part Apache, Cherokee/Choctaw, will share about his journey joining the Army and what he hopes for the future of Native Americans in the US military.

**Thursday, Nov. 13<sup>th</sup>**  
Learn about the role of Native Americans and Native Hawaiians in the US Military.

**WEEK 3: NOVEMBER 17-20**

College Hour 12:30pm - 1:30pm  
Flagpole - Admin Bldg.  
Native Resource Center I-126 (2<sup>nd</sup> Floor)

**KUMEYAAY FLAG RAISING & KUMEYAAY LANGUAGE PRESENTATION**

**Tuesday, Nov. 18<sup>th</sup>**  
Join us as we raise the Kumeyaay Nation flag. Bobby Wallace, a local community leader, and our Native Resource Center team, will share about our work to support our Native students and community.

**Thursday, Nov. 20<sup>th</sup>**  
Drop by and learn about a local Kumeyaay language preservation project led by Nicholas Smith, Kumeyaay Language Educator, Linguist, and Consultant.

**WEEK 4: NOVEMBER 24-27**

<https://bit.ly/MiramarNASSP>

**NATIVE AMERICAN RESOURCES**

Take time this week to learn more about Native American history and how you can support our American Indian & Alaska Native students. Check out resources available on our NASSP website, follow our Instagram, and learn how you can get involved in the work on campus and in our communities.

Please contact the LEAD Office for accommodations requests 3-days prior to the event: [miramarlead@sdccd.edu](mailto:miramarlead@sdccd.edu)

**OUR SPOKEN ROOTS**

Learn about the importance of the Kumeyaay language!

**Nicholas Smith** is an 'Tipay-Kumeyaay educator and language preservation advocate from the San Pasqual Band of Mission Indians. He is the founder and director of the 'Tipay Aa Preservation Project, which provides accessible educational resources to support the revitalization of the 'Tipay Aa language. He also serves as the Kumeyaay Language Consultant at the San Pasqual Education Department, where he develops curriculum & supports language learning efforts.

**12:30-1:30 NOVEMBER 20, 2025 AT THE NATIVE RESOURCE CENTER (I-26)**

For disability accommodations, please email [Miramarlead@sdccd.edu](mailto:Miramarlead@sdccd.edu) at least 3 days prior to the event.

**Week 2 of Native American Heritage Month**

**JOIN US FOR A DISCUSSION WITH SGT. RAYMOND**

Staff Sgt. Raymond, a National Guard servicemember who is part Apache, Cherokee/Choctaw, will share about his journey joining the Army and what he hopes for the future of Native Americans in the US military.

College Hour 12:30pm - 1:30pm

**Wednesday November 12, 2025 at the Native Resource Center I-126 (2nd Floor)**

Leading Equity, Anti-Racism & Diversity (LEAD)

**BEADING CIRCLE AT THE NRC**

Join us in a creative beading workshop led by **Dr. Viki Eagle (Sicangu Lakota)**. No prior experience necessary.

**3 DEC, 2025**  
I-BUILDING ROOM 126  
12:30 - 1:30 PM

For disability accommodations, please email [Miramarlead@sdccd.edu](mailto:Miramarlead@sdccd.edu) at least 3 days prior to the event.



# MIRAMAR COLLEGE POWWOW

SATURDAY MARCH 21<sup>ST</sup> 2026

10:00AM - 6:00PM


Join us for the second annual Miramar College Pow Wow hosted on our campus this Spring semester.

## What is a Pow Wow?

Pow Wows are intertribal gatherings that include singing, dancing, food, crafts, and reconnecting with old friends.

Pow Wows are important because they showcase traditional regalia and cultural dances.

All community members are welcome to partake in the celebration. This event is open to the public.



**MIRAMAR COLLEGE**  
JOMON VALLEY INDIAN EDUCATION PROGRAM & TITLE VI

# Pow Wow Volunteers Needed

**Saturday  
March 21, 2026**  
Shifts vary from 8AM-8PM

 **Miramar College -  
Hourglass Community Field**  
10440 Black Mountain Road  
San Diego, CA 92126

**Miramar College Pow Wow  
Volunteer Registration**



[bit.ly/miramar2026](https://bit.ly/miramar2026)

**We Need Help With**

- ☒ Event set-up
- ☒ Event Breakdown
- ☒ Hospitality & Guides
- ☒ Parking

For questions  
& more information :

miramar-nassp@sdccd.edu  
carlatourville@yahoo.com  
cgreybull@sandi.net

# AANHPI / PEARL RESOURCE CENTER

Asian **A**merican, **N**ative **H**awaiian, **P**acific **I**slander | **P**romoting **E**ducational **A**chievement, **R**etention, & **L**eadership

## 7 Program Outcomes

- Culturally Responsive Learning Communities
- Academic Advising & Counseling
- Mental Health Awareness
- Career Development & Readiness
- Supplemental Instruction & Tutoring
- AAPI Courses & Curriculum
- Leadership Development & Mentoring



SAN DIEGO MIRAMAR COLLEGE

*Pearl* Program



# LEARNING COMMUNITIES & ACADEMIC PARTNERSHIPS



## PEARL Paired Courses

- Fall 2024: ENGL C1000 & FILI 100
- Spring 2025: ENGL C1001 & MUSI 103
- Fall 2025: ENGL C1000 & MUSI 103
- Spring 2026: ENGL C1001 & AAPI 124





# FALL HIGHLIGHTS & SPRING 2026 FOCUS

## Fall 2025 Program Highlights

- PEARL / AANHPI Resource Center Soft Opening
- AANHPI Student & Family Orientation
- Filipino American History Month Programming
- Diwali Celebration

## Spring 2026 Focus

- APAHE Conference
- Workshop Series: AANHPI Horizons, Hula, Lei Making, & Passion Planners
- Career & Mental Health Counseling
- Expanded collaborations with Enrollment Services, Career & Life Design Services, and Lotus
- AAPI Achievement & Recognition Event – May 6<sup>th</sup>





# LOTUS FUND (SAN DIEGO FOUNDATION GRANT)

Supporting initiatives that celebrate AANHPI heritage and community success

## About the Program

Providing wellness support for Asian American, Native Hawaiian, Pacific Islander (AANHPI) students at Miramar College in a de-colonizing and de-stigmatizing way by moving away from a one-size-fits-all reactive approach of mental health and toward a proactive, culturally responsive, strength-based model that honor individual agency, lived experience, and self-defined wellbeing.

## Highlights from Fall 2025

- Journaling for Clarity & Growth workshop
- Post-session interactions
- End of Semester celebration

## Focus for Spring 2026

Further expanding a proactive model, while promoting agency, self-expression, and intentional decision-making.

Through our workshops and outreach events (20) in Fall 2025, we engaged with a total of 611 AANHPI students and friends, averaging approximately 30 participants per event.



**AANHPI WORKSHOPS**

**K2 - 108**   **Fall 2025**   **12 - 1:30 PM**

**9/11**   **Kickoff: Mindful Reset & Self-Awareness**

**9/25\***   **Journaling for Clarity & Growth**

**10/7**   **Focus & Time: Study Routines That Fit You**

**10/14**   **Headspace Workshop**

**10/23**   **Understand Yourself with MBTI**

**11/6**   **Coping with Worry & Stress**

**11/20**   **Relationships, Communication & Boundaries**

**12/4\***   **Identity, Belonging & Cultural Wellness Plan**

**12/11\***   **End of Semester Celebration**

*\*Workshop location for 9/25 & 12/4 will be in I-127.*

For disability accommodations, please contact Kio Truong at [ktruong@sdccd.edu](mailto:ktruong@sdccd.edu) at least three days prior to the event.



# LOTUS UPCOMING WORKSHOPS

## LOTUS SPRING 2026 WORKSHOPS

**FEB 11**

WEDNESDAY/ 12:30-2PM  
**LOCATION:** I-127

### WHERE YOUR PASSION BEGINS

Come learn about passion planner and start mapping out your journey. **FREE** food and planners available while supplies last.

**FEB 25**

WEDNESDAY/ 12:30 - 2PM  
**LOCATION:** I-127

### CREATE YOUR OWN ZINE

Your Story, Your Power: A Zine Workshop. Come create a mini zine that reflects you - your identity, roots, strengths, or personal wins.



SAN DIEGO MIRAMAR COLLEGE  
*Pearl* Program

**MAR 9**

MONDAY/12:30 - 2PM  
**LOCATION:** I-127

### THE LOTUS CIRCLE: CREATIVE PROBLEM- SOLVING

A supportive space to connect with other AANHPI students and friends through guided conversation, reflection, and shared problem-solving. Come as you are.

**MAR 25**

WEDNESDAY/12:30 - 1:30PM  
**LOCATION:** K1-107/ZOOM

### SCROLL WITH INTENTION: MINDFUL CHOICES IN A DIGITAL WORLD

A hybrid interactive workshop exploring how phone and screen use can impact mood, stress, and focus - and how to build healthier, more intentional digital habits.

**APR 8**

WEDNESDAY/12:30 - 2PM  
**LOCATION:** I-127

### YOUR TIME, YOUR RULES

Real talk on time management; from your fellow students. Learn how two students navigate school and life, then reflect on what works for you.

**APR 20**

MONDAY/12:30 - 2PM  
**LOCATION:** I-127

### THE LOTUS CIRCLE: TRY AGAIN - LEARN FROM PAST EXPERIENCES

Come explore challenges and "oops moments" together, reflect on lessons learned, and lift each other up. Come as you are.

**MAY 6**

WEDNESDAY/ 12:30 - 2PM  
**LOCATION:** I-127

### IDENTITY MAPPING

Join us for a chill, creative workshop where you'll map out what's shaped you and where you want to go.

**MAY 20**

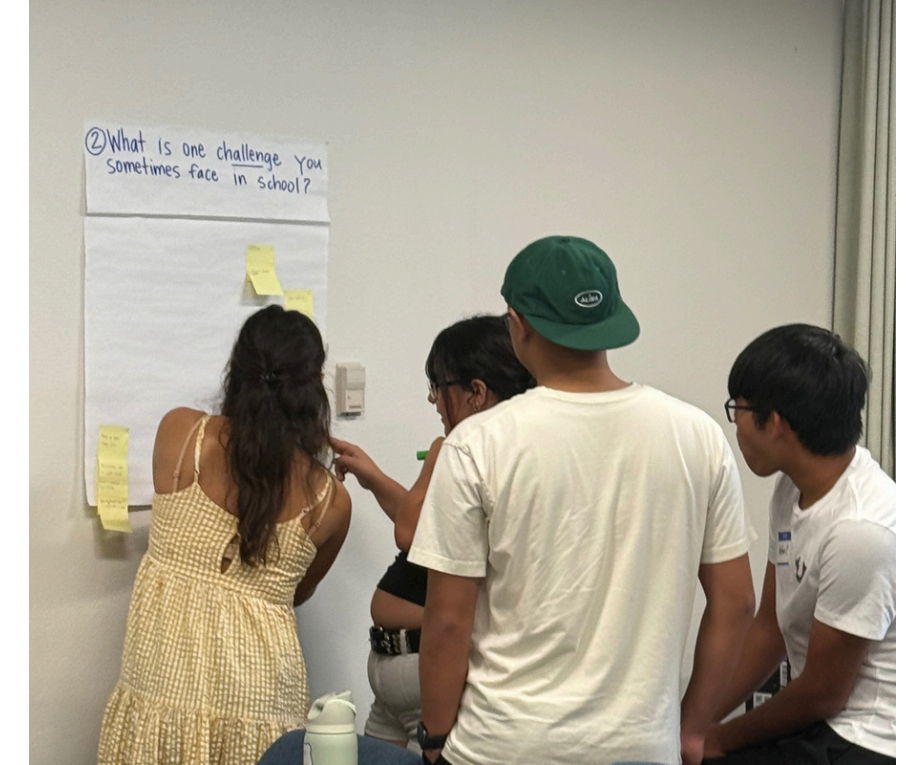
WEDNESDAY/ 12:30 - 2PM  
**LOCATION:** K2-108

### END OF SEMESTER CELEBRATION

A space for AANHPI and friends to celebrate and reflect on the semester, focusing on progress and wins - no matter how big or small.

INTENDED FOR PEARL/AANHPI STUDENTS. ALL ARE WELCOME!

FOR DISABILITY ACCOMMODATIONS, PLEASE CONTACT KIO TRUONG AT  
KTRUONG@SDCCD.EDU AT LEAST THREE DAYS PRIOR TO THE EVENT.





# PRIDE CENTER AND PROGRAMS

## About the Program

The PRIDE Program and Services at Miramar College is dedicated to fostering a welcoming and supportive environment for the LGBTQ+ community. Through our values, Fostering Leadership, Inclusivity, Growth, Hope, and Transformation (FLIGHT), we strive to ensure that all individuals feel valued, heard, and respected. Through our work and dedication, we hope to advance awareness and acceptance of diverse identities in both academics and personal growth.

## Pride Program Services

- Pride Recognition Stole
- Receive Curated Merchandise
- 1 Hour Queer Advising & Support
- Pride Newsletter
- Rainbow Archive Book Rental
- Additional Social Events & Activities
- Queer & Ally Directory

## Pride Center Services

- Queer Advising and Referral Programs
- Student Wellness & Support
- Rainbow Archives
- Student Health and Supply Cabinet
- Pride event and Workshops
- Safe Zone Trainings
- Scholarship Support



[MiraPride@sdccd.edu](mailto:MiraPride@sdccd.edu)



+619-338-7911



I-Building | 125





# PRIDE CENTER AND PROGRAMS

## Highlights from Fall 2025

- Pride Month Celebration Resource Fair
- Events: Queers-Giving, Social Network and Queer Workshops
- Grand Opening of Miramar Pride Center & Operations

## Focus for Spring 2026

### Program Development:

- Rainbow Book Club
- Pathways to Pride: Build your Passion with Passion Planner
- "What's the Sitch?" PRIDE Community Building Circle - (Monthly)
- Queer related workshops, events, and so much MORE!

### Faculty and Staff Engagement:

- Reboot of Miramar Safe Zone Training (In-Person, Online, and Hybrid)
- Queer and Ally List and PRIDE Newsletter

### Major Events

- SDCCD Pre-Pride Month Celebration
- CCC LGBTQIA2S+ Summit Conference
- Lavendar Celebration
- PRIDE Flag Raising







THANK YOU



# What does this mean for us?

## Mission and Vision ... Community

### **Familiar Community** *(Academic and Career Pathways, ACPs)*

1. Student knowledge and awareness
2. Affiliation and Engagement
3. ACP Coaches
4. Leveraging technology
5. Faculty/Classified Professional knowledge and awareness



Cultivating Community: Making the Invisible, Visible ... through Building Community

# Collegewide Planning Summit

SAN DIEGO MIRAMAR COLLEGE

**MARCH**

**13,**

9:00 to Noon  
**2026**

**Flex #31480**





**Thank you!**

