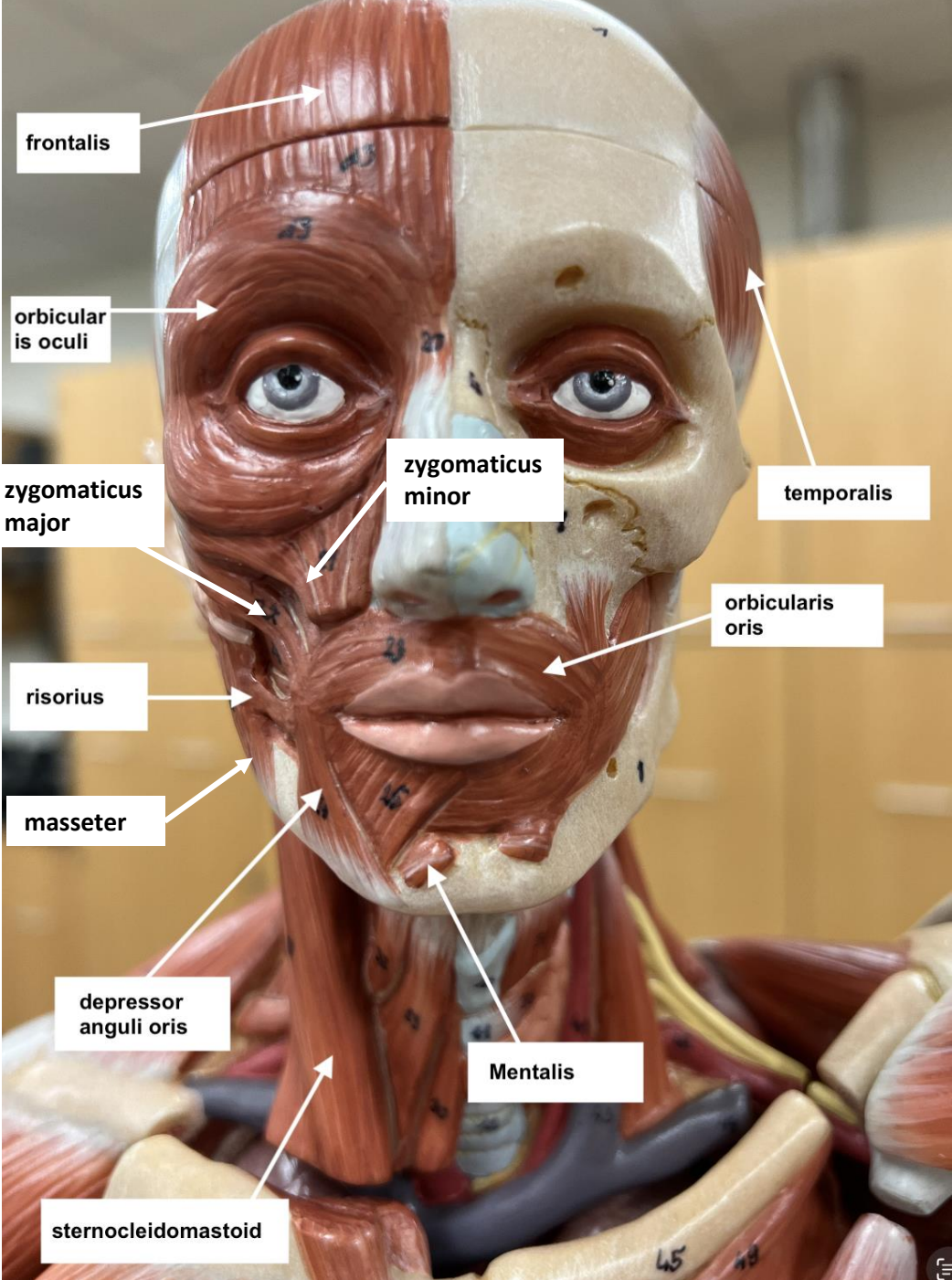
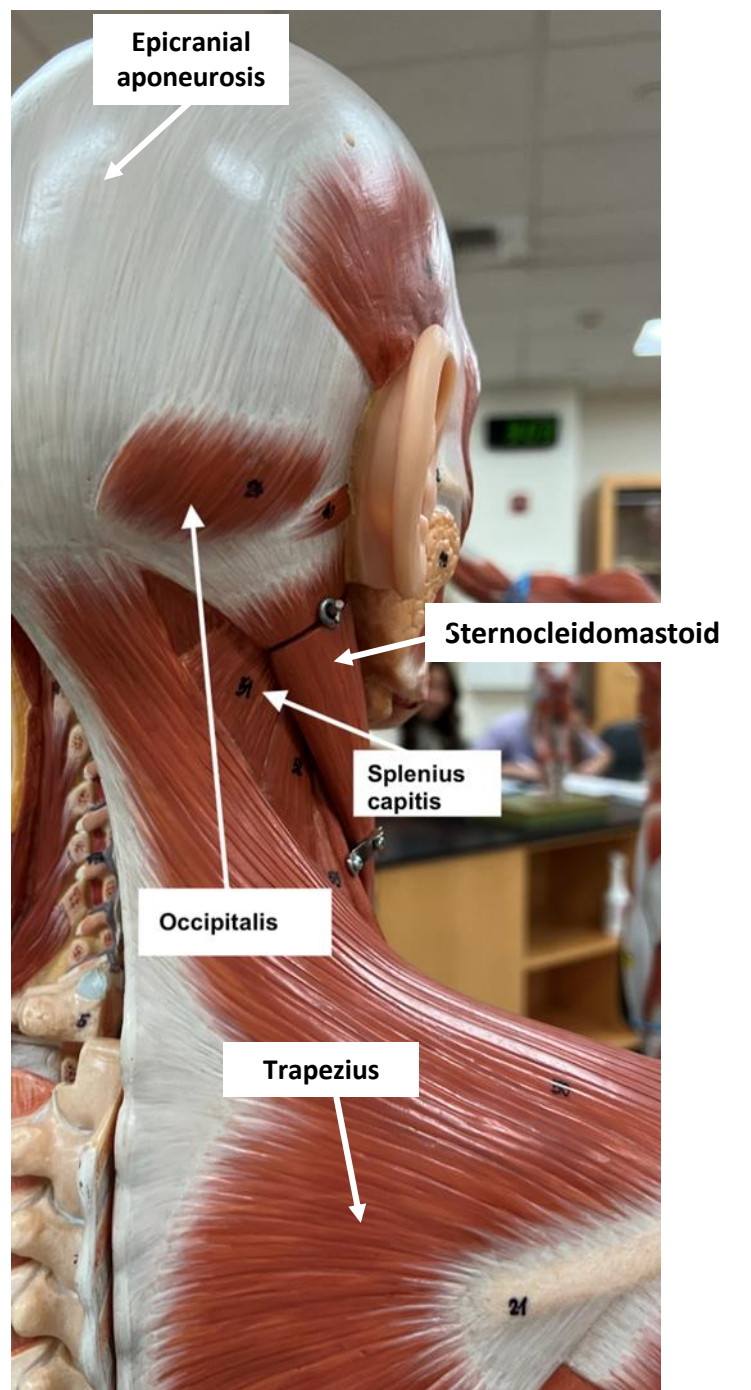
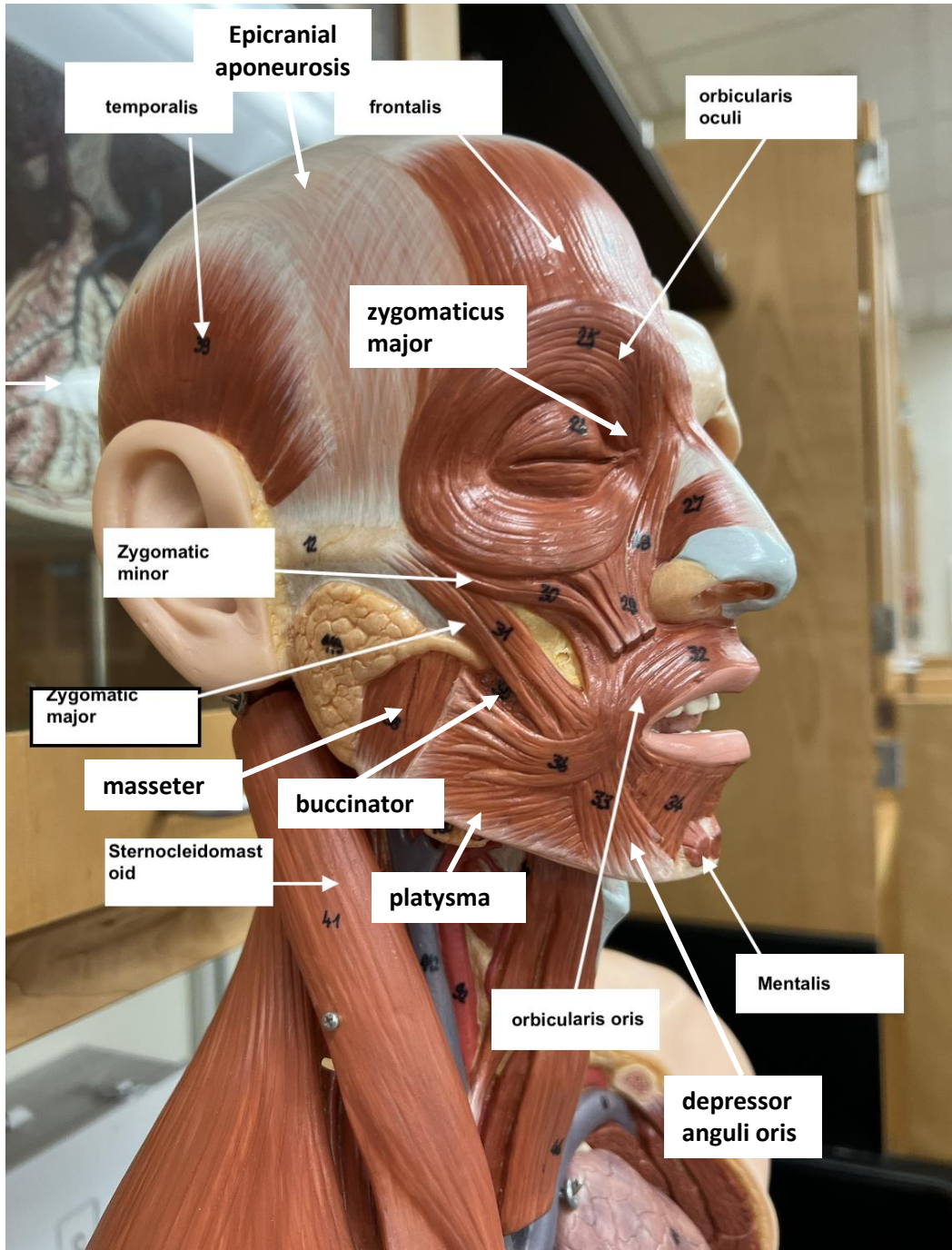
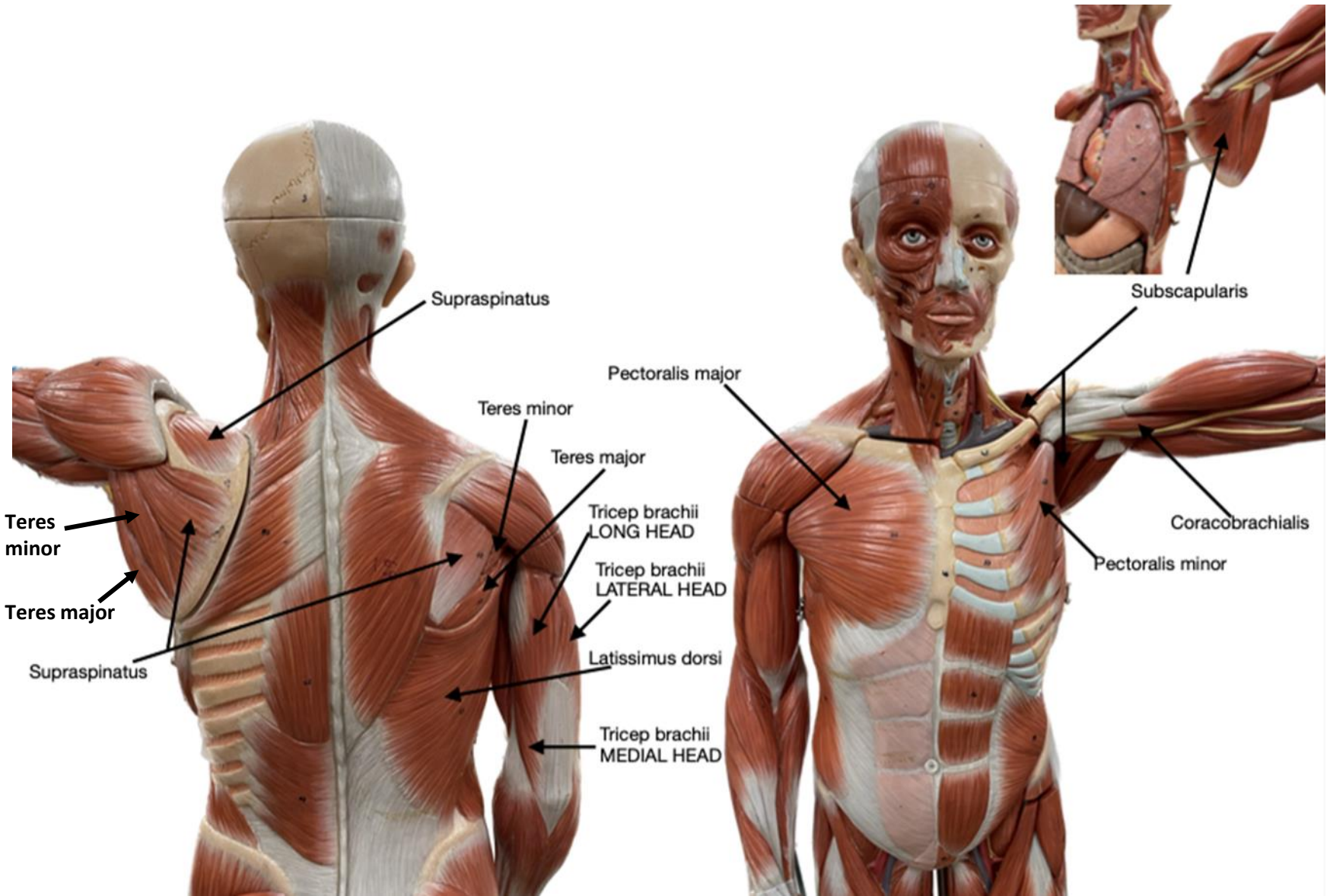


Muscles of Facial Expression/Chewing

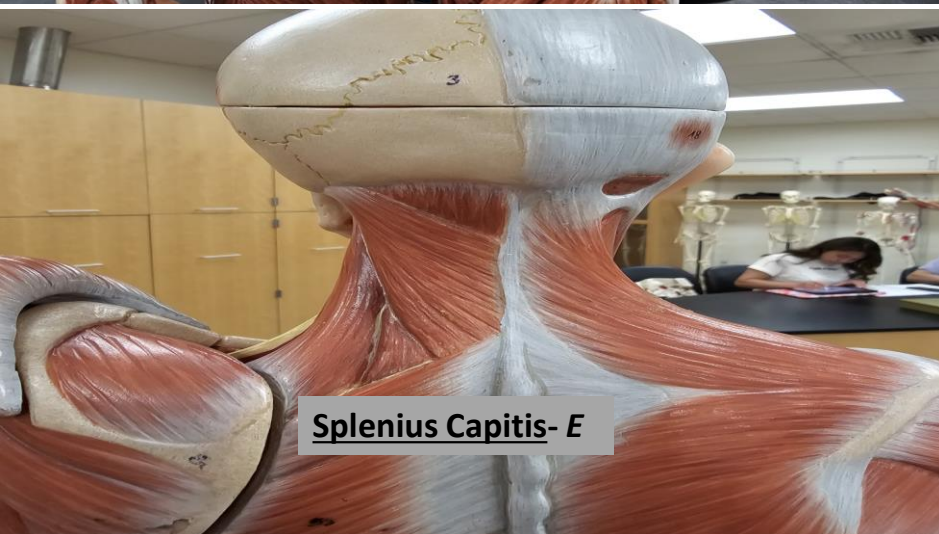
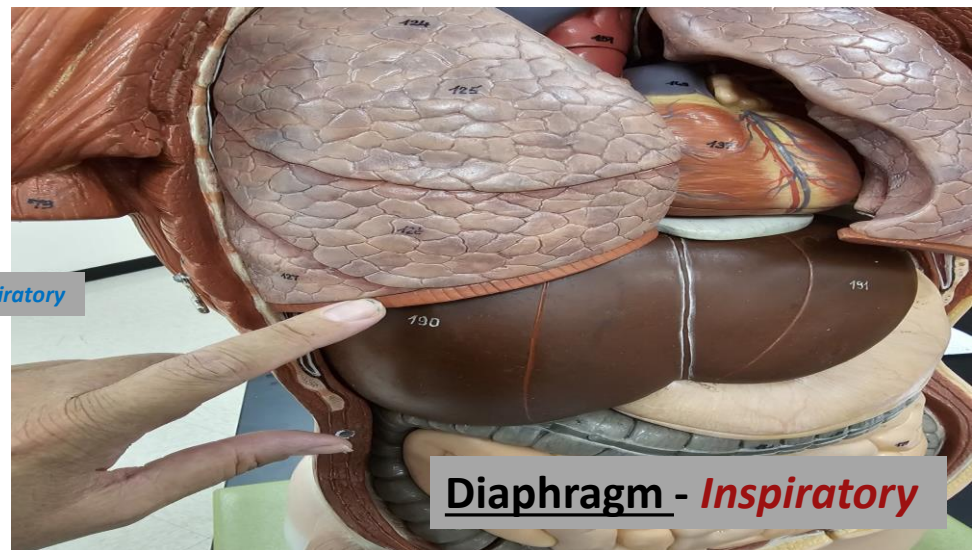
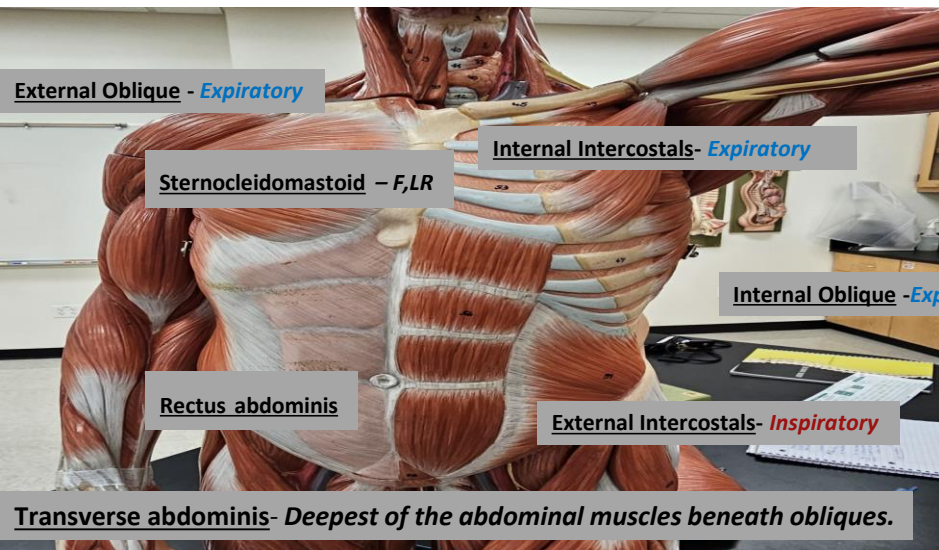




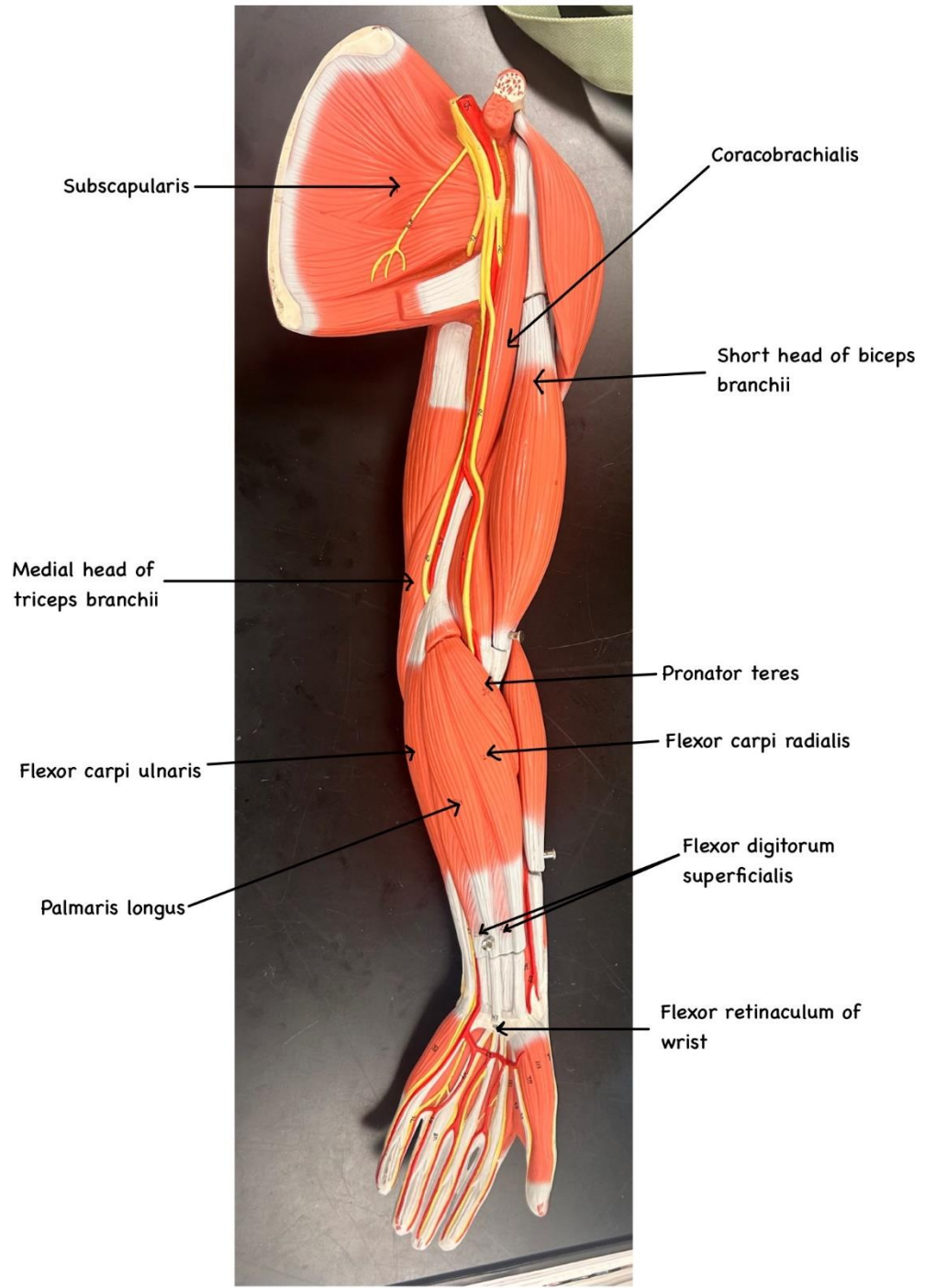
Muscles of Back and Chest and Arm



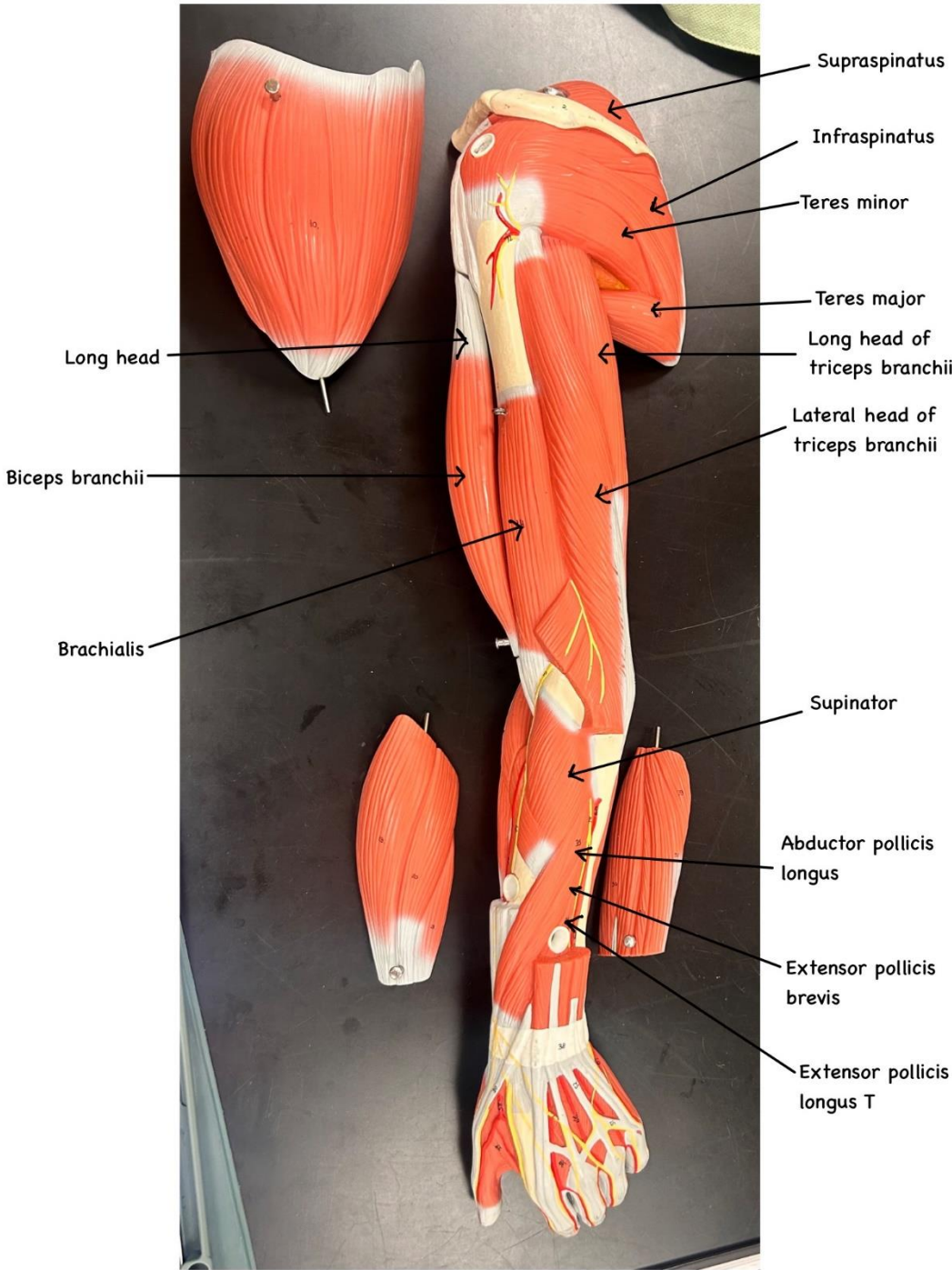
Muscles of Chest and Neck



Muscles of the Arm



Muscles of the Arm



Supraspinatus

Infraspinatus

Teres minor

Teres major

Long head of triceps brachii

Lateral head of triceps brachii

Supinator

Abductor pollicis longus

Extensor pollicis brevis

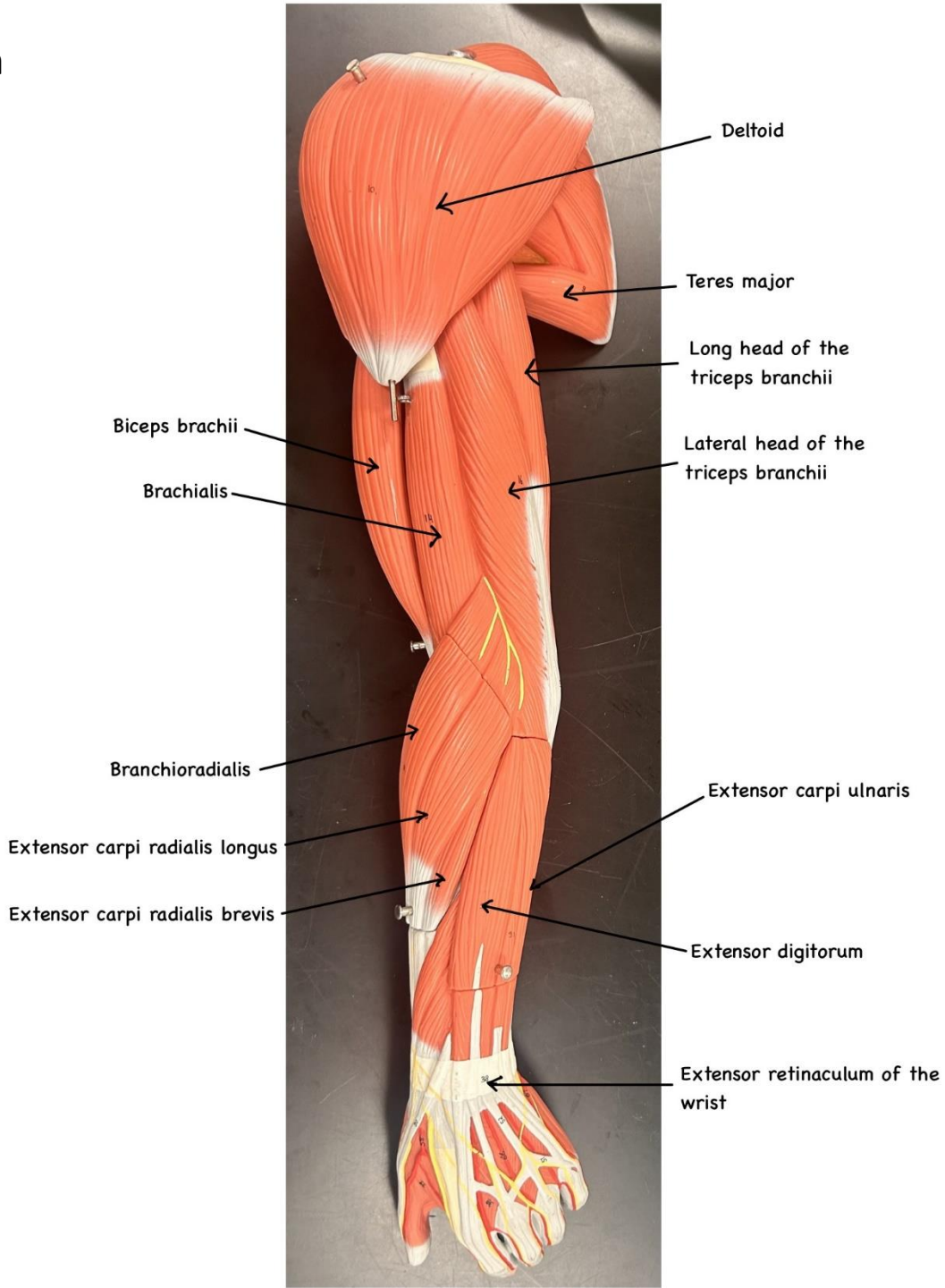
Extensor pollicis longus T

Long head

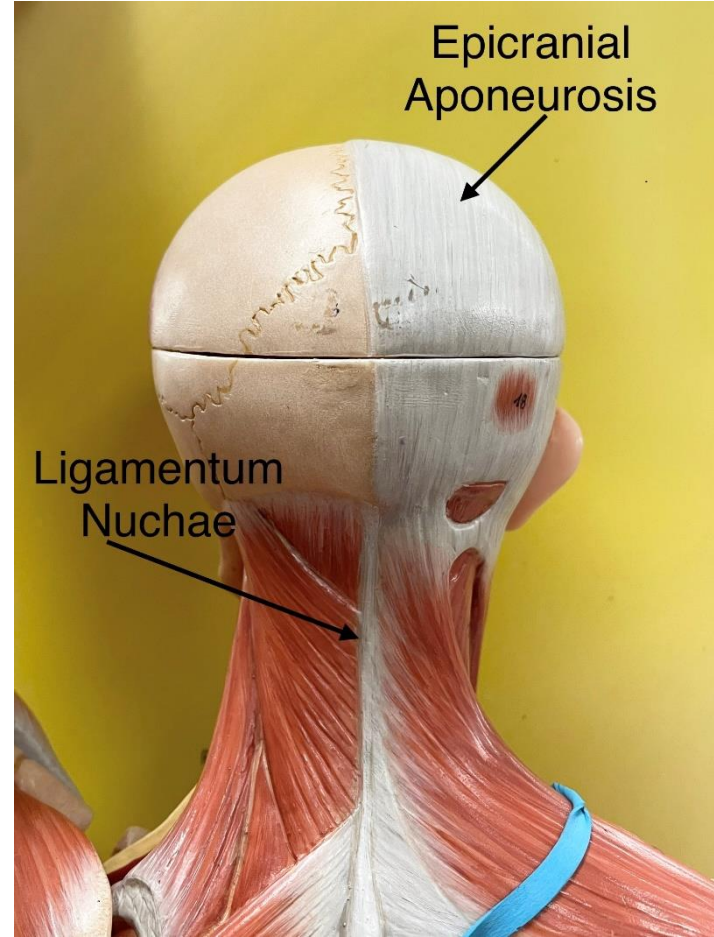
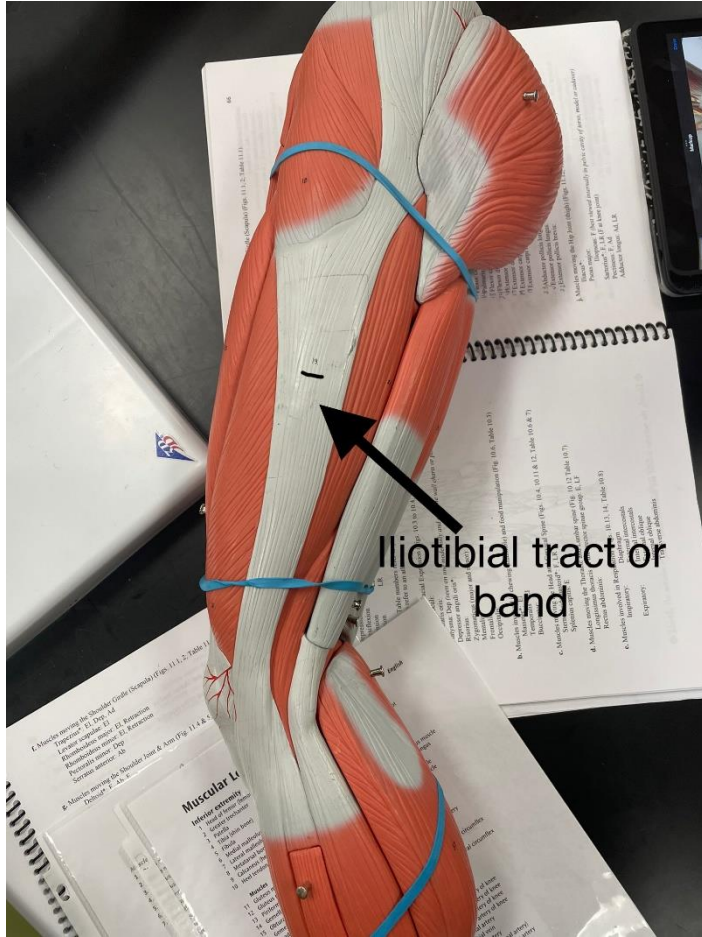
Biceps brachii

Brachialis

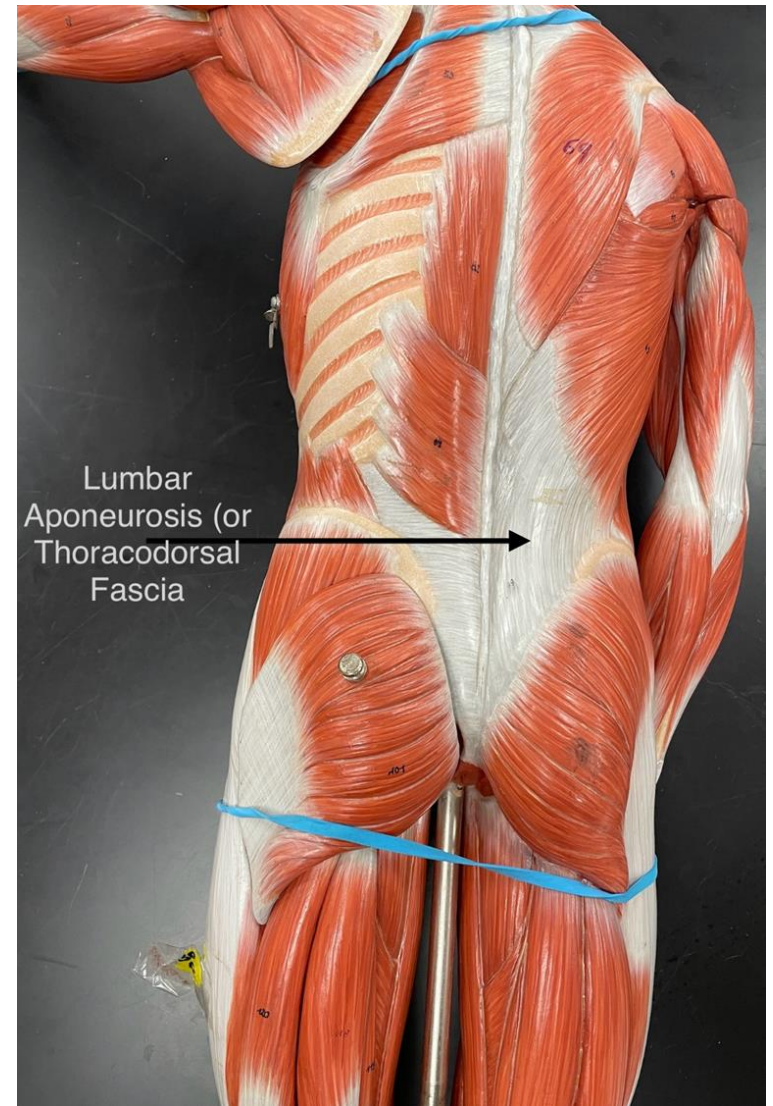
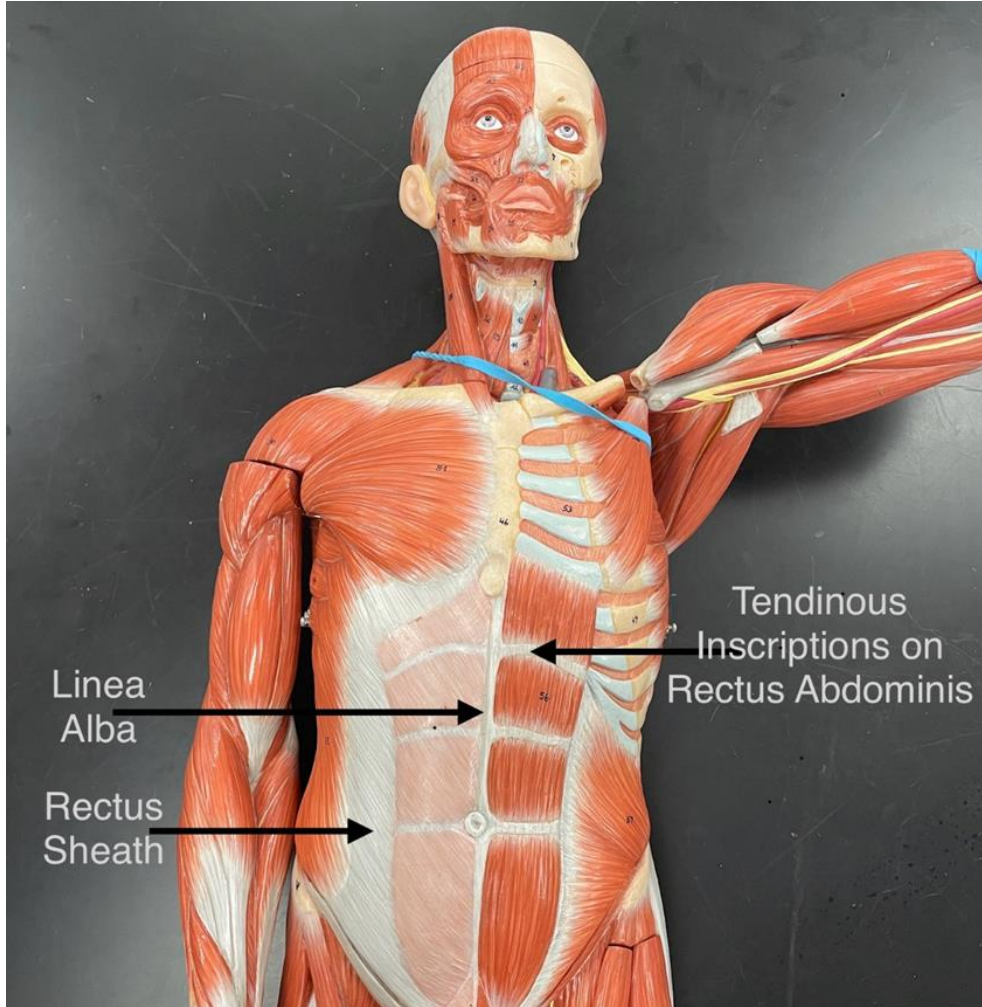
Muscles of the Arm



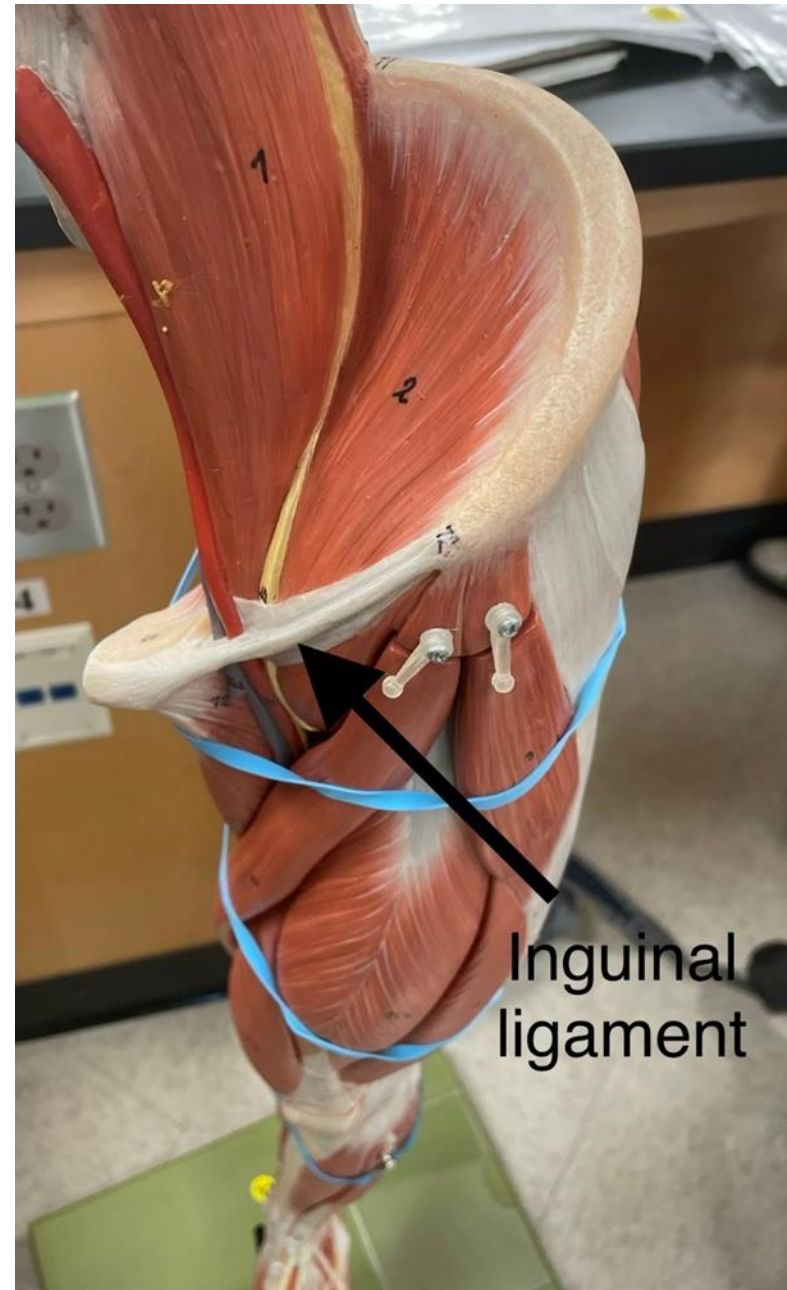
Non-Muscular Structures Associated with Musculature



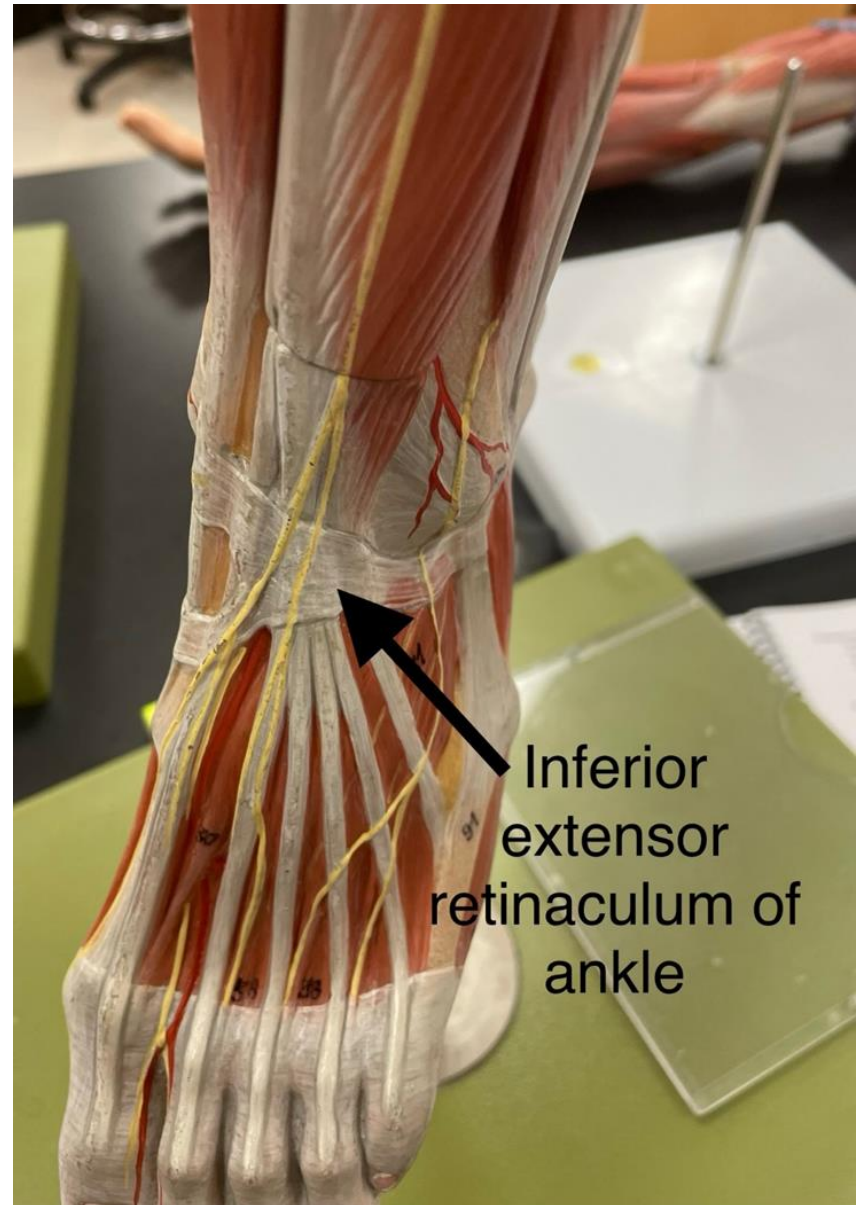
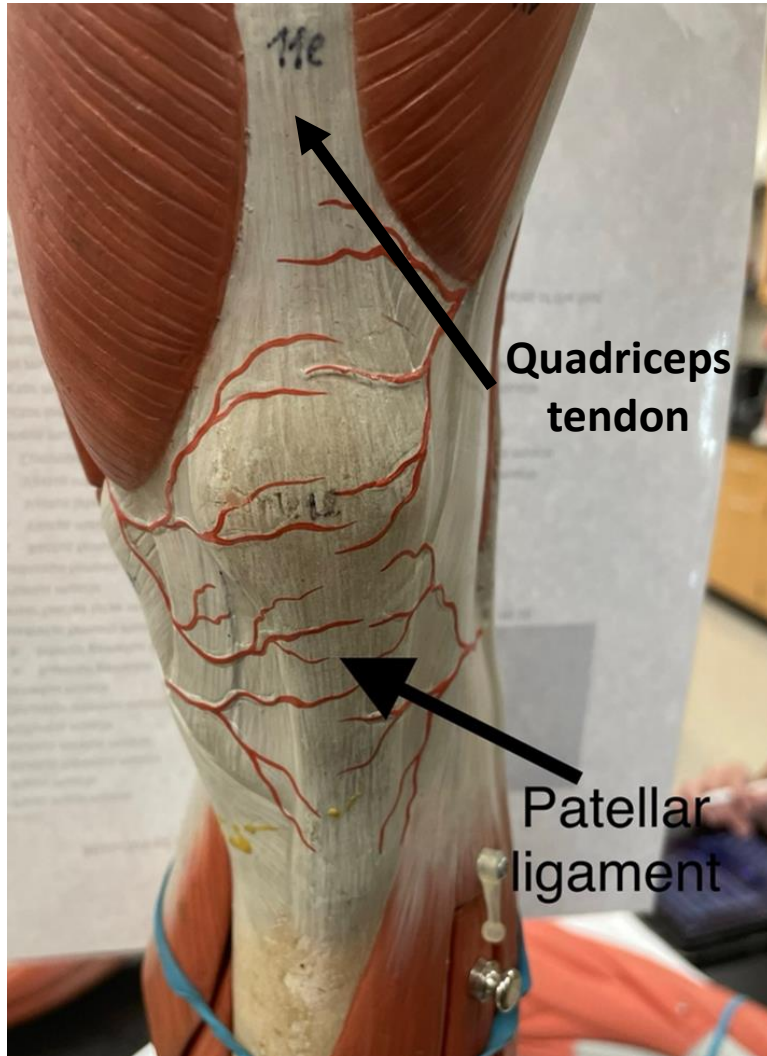
Non-Muscular Structures Associated with Musculature



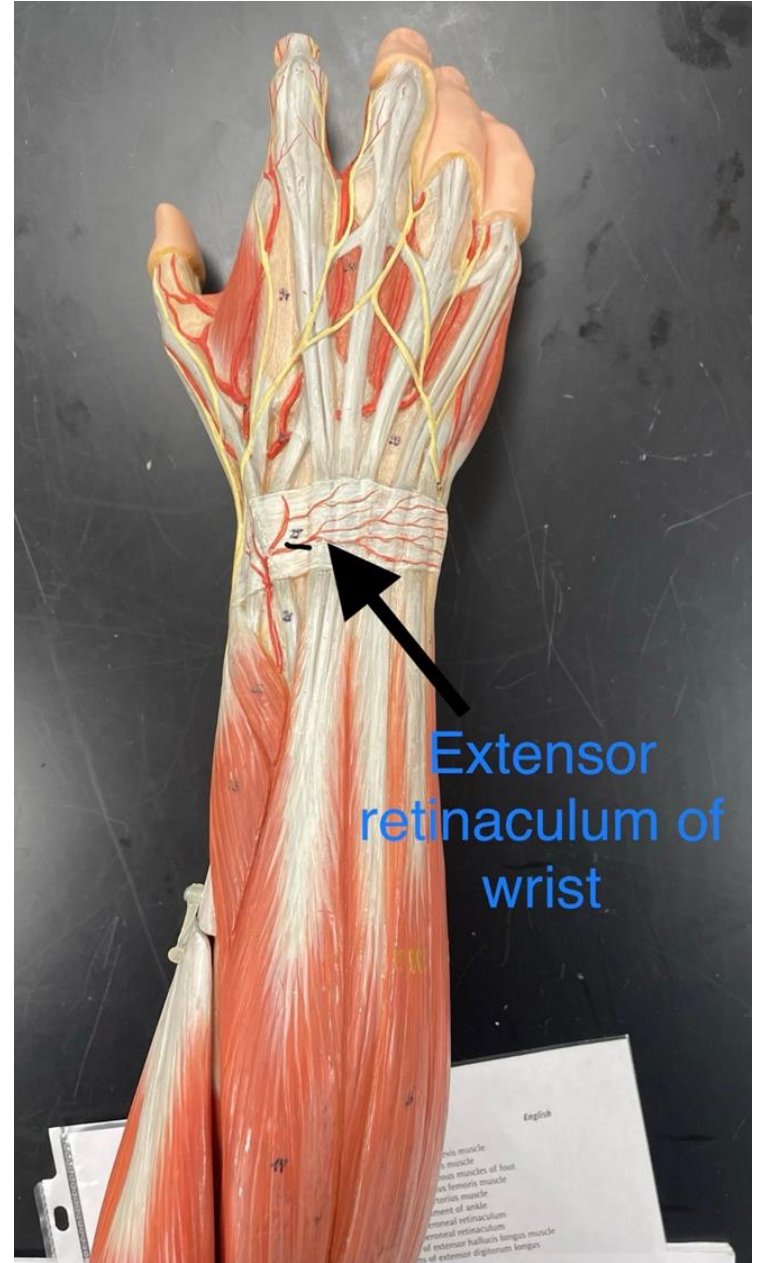
Non-Muscular Structures



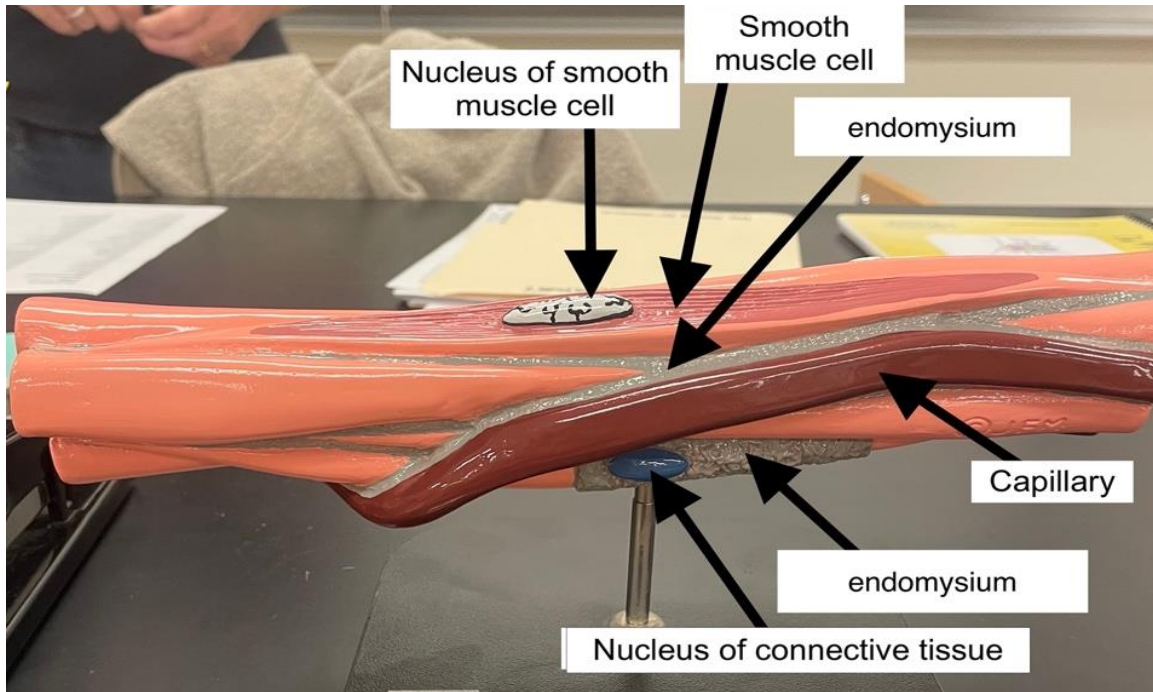
Non-Muscular Structures



Non-Muscular Structures

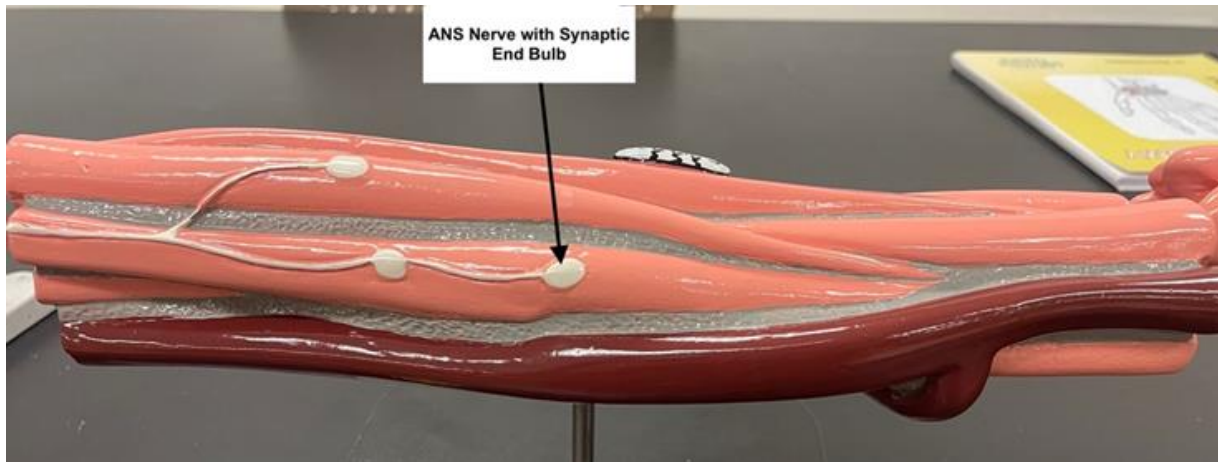


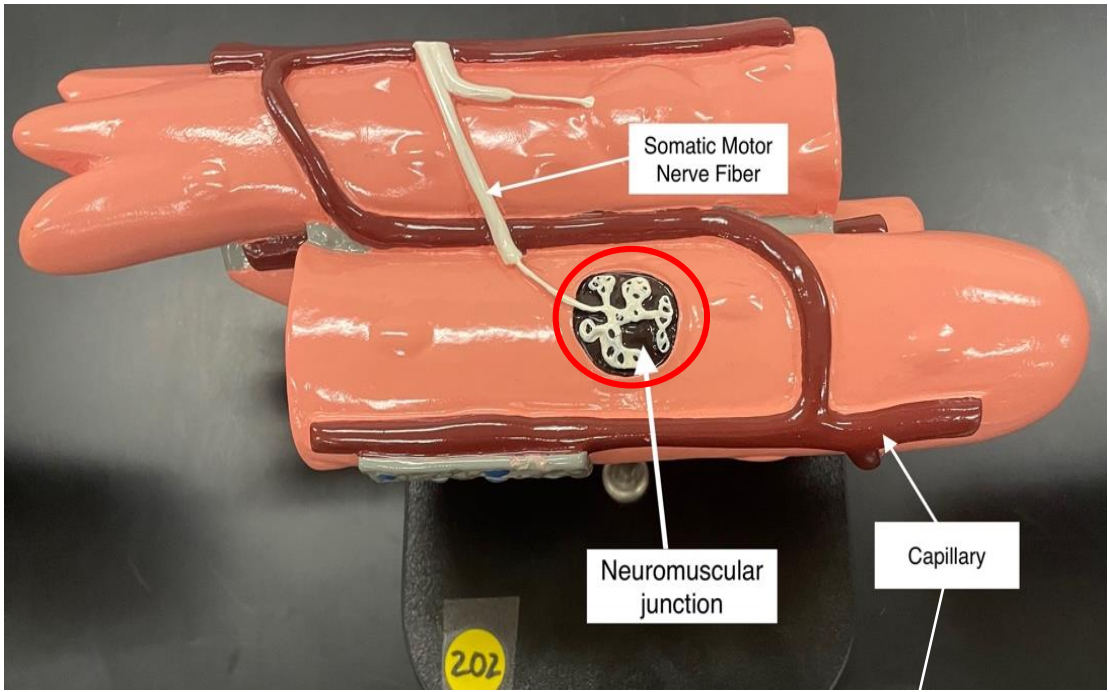
Histology Models of Skeletal, Cardiac and Smooth Muscle



Model 1 (#201 Smooth Muscle)

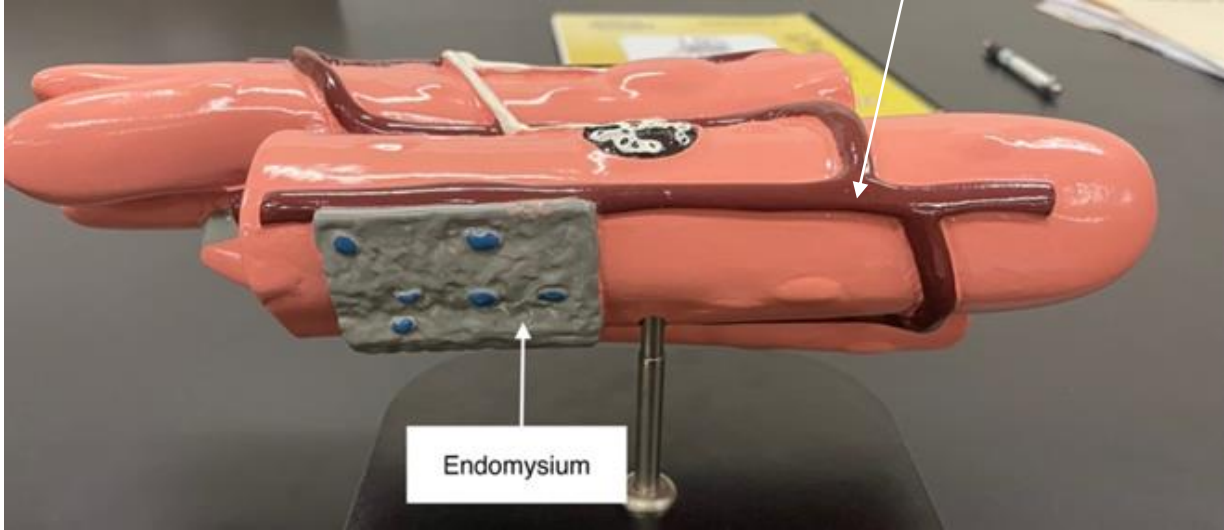
1. Smooth muscle cell (irregular spindle-shaped).
2. Nucleus of Smooth muscle cell.
3. Nucleus of connective tissue cells.
4. Capillary.
5. Endomysium (it's the gray c.t.).
6. Autonomic (ANS) nerve with Synaptic End Bulb.





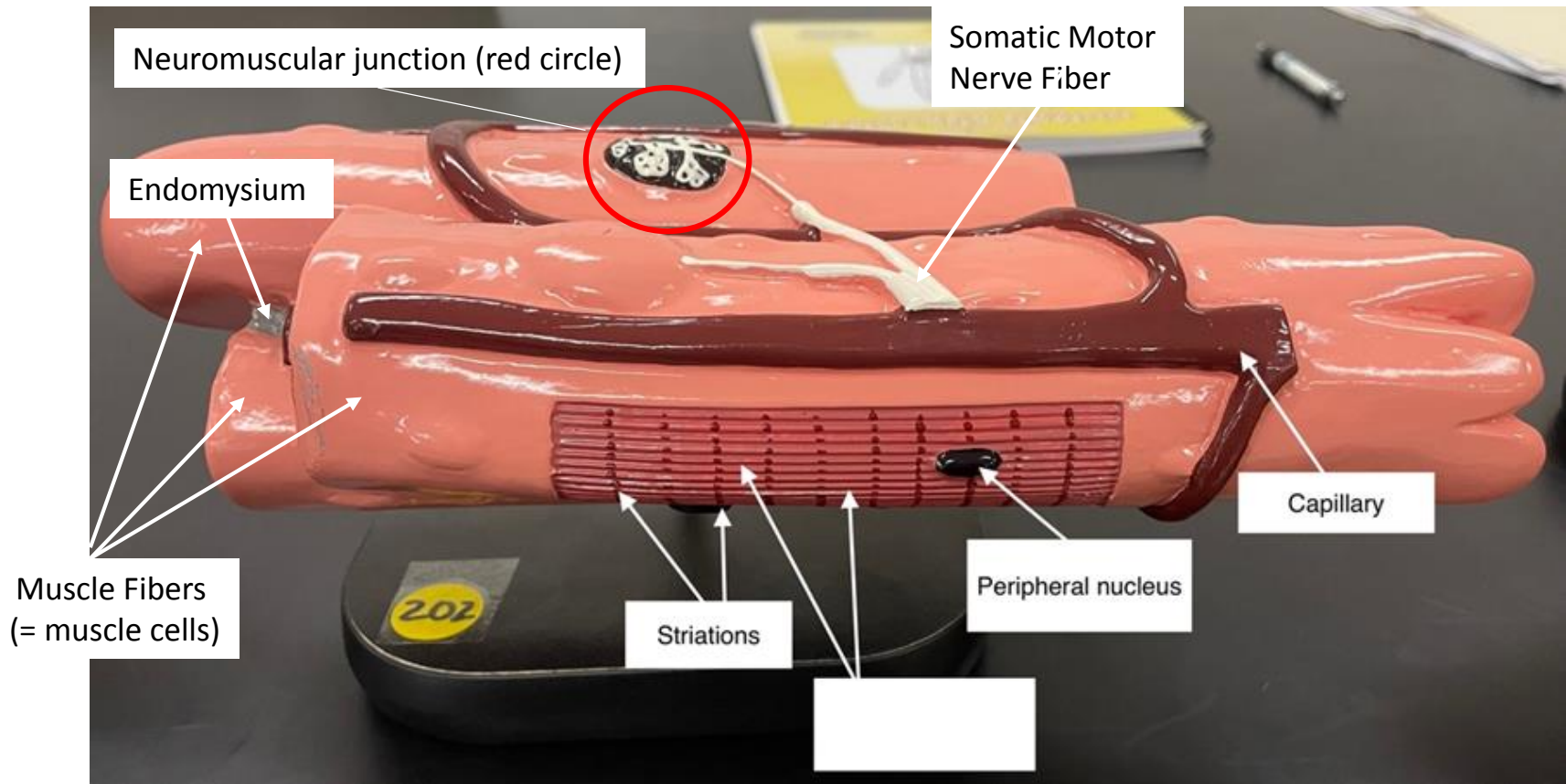
Model 2 (#202 Skeletal Muscle)

- 1. Endomysium (gray colored c.t.)
- 2. Muscle Fibers (= muscle cells).
- 3. Nuclei of muscle fibers (peripheral).
- 4. Capillary.
- 5. Striations.
- 6. Neuromuscular junction (red circle).
- 7. Somatic Motor Nerve Fiber.



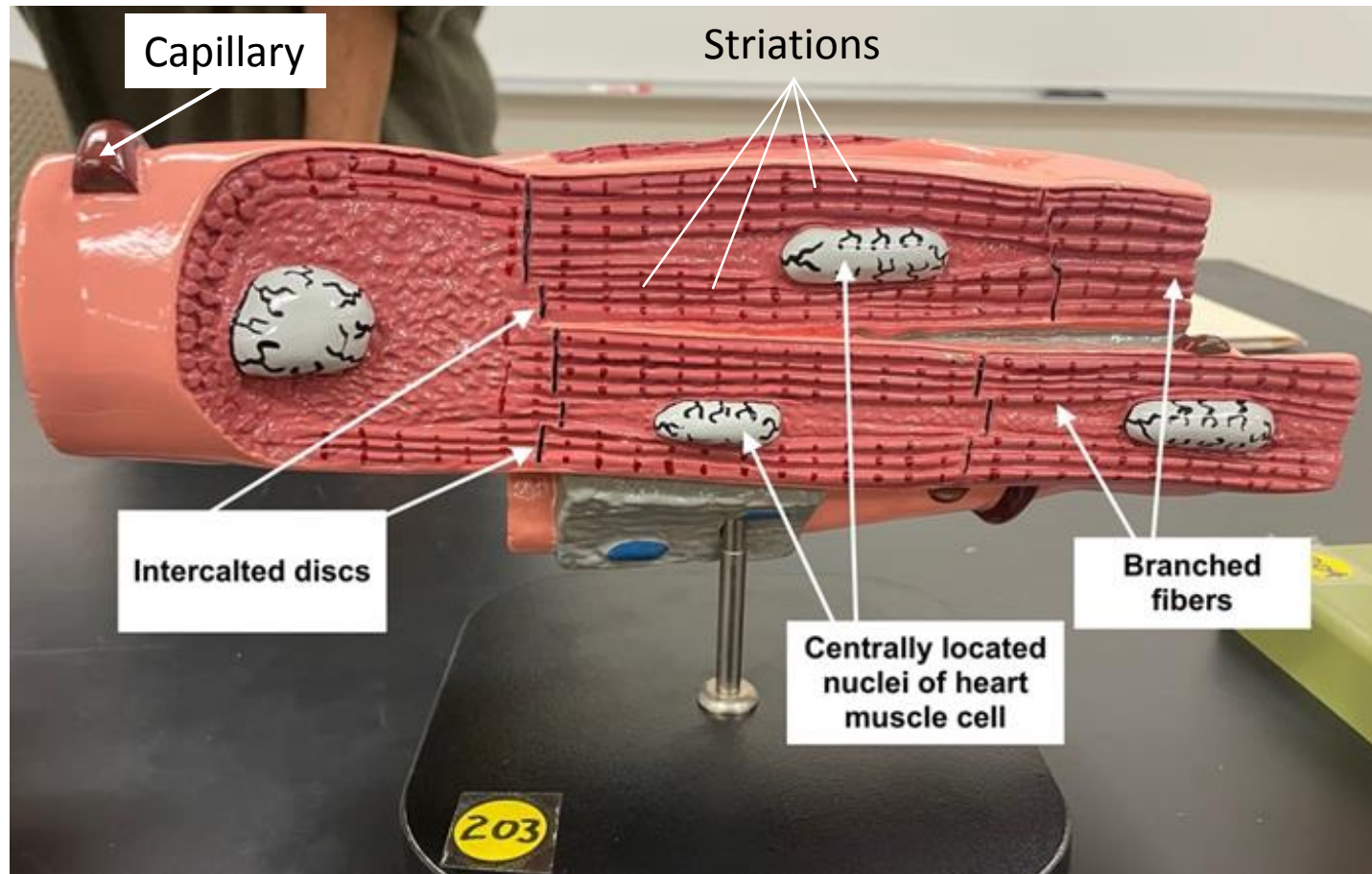
Model 2 (#202 Skeletal Muscle)

1. Endomysium (gray colored c.t.).
2. Muscle Fibers (= muscle cells).
3. Capillary.
4. Striations.
5. Peripheral nuclei (of muscle fibers).
6. Neuromuscular junction (red circle).
7. Somatic Motor Nerve Fiber.



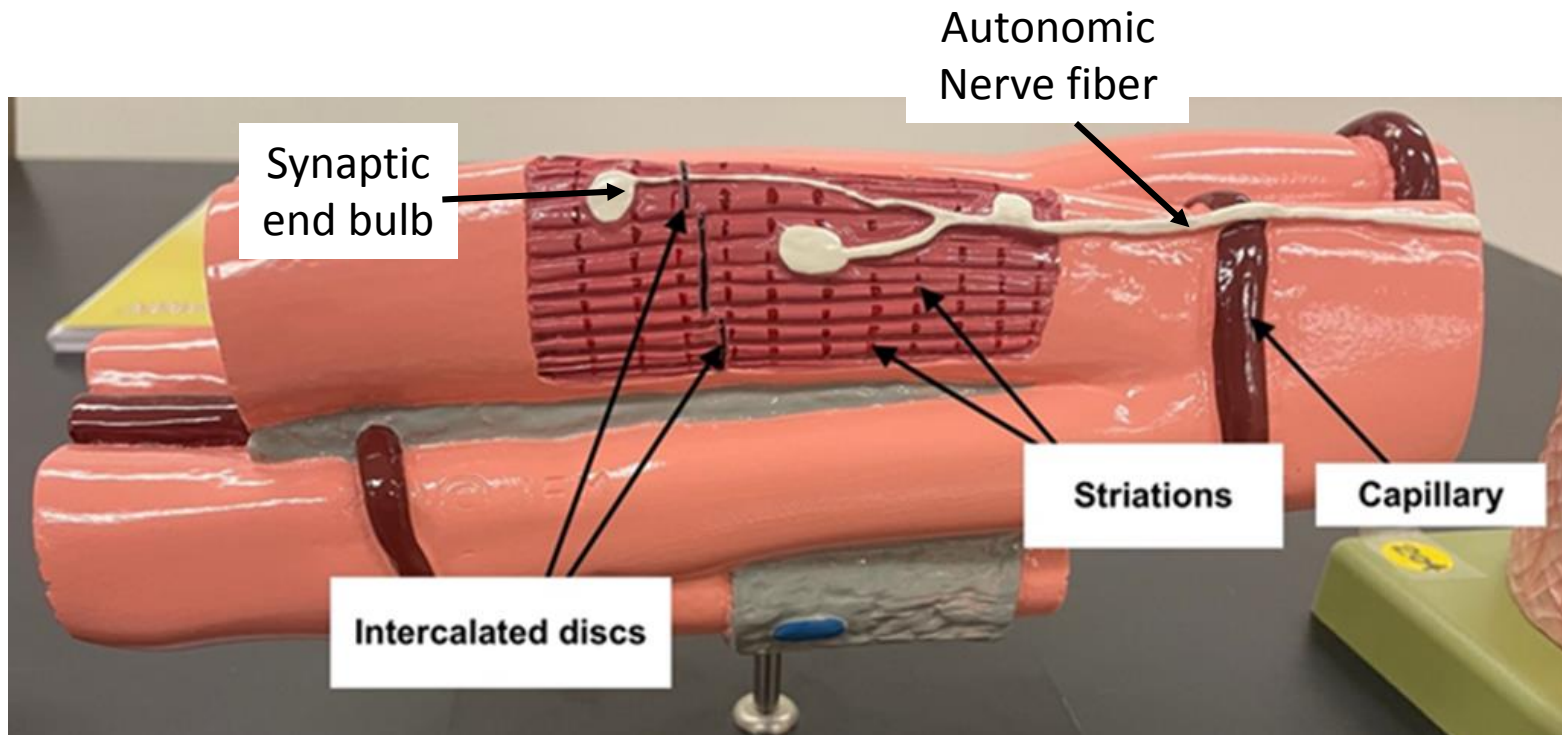
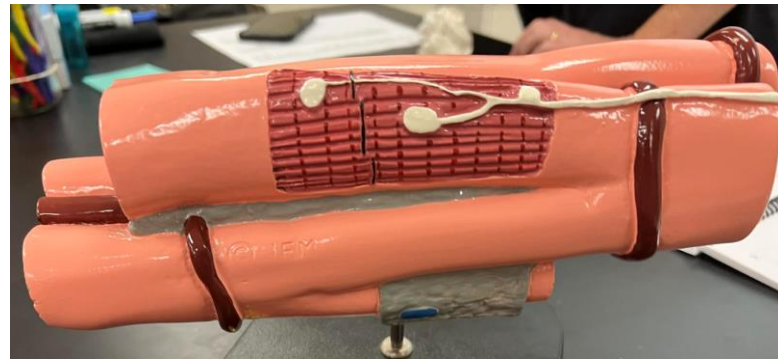
Model 3 (#203 Cardiac Muscle)

1. Branched muscle fibers.
2. Striations.
3. Centrally-located nuclei.
4. Intercalated discs.
5. Capillary.
6. Autonomic nerve fiber.
7. Synaptic end bulb.



Model 3 (#203 Cardiac Muscle)

1. Branched fibers
2. Striations
3. Centrally-located nuclei
4. Intercalated discs
5. Capillary
6. Autonomic nerve fiber
7. Synaptic end bulb



From page 62 of Anatomy Lab Manual

(Modified to fit models)

Neuromuscular Junction for Skeletal Muscle

1. myelin sheath
2. telodendria (motor axon branches)
3. synaptic knob (end bulb)
4. striations
5. nuclei
6. motor end plate (region of sarcolemma)
7. neuromuscular junction (circled)
8. sarcolemma
9. endomysium

