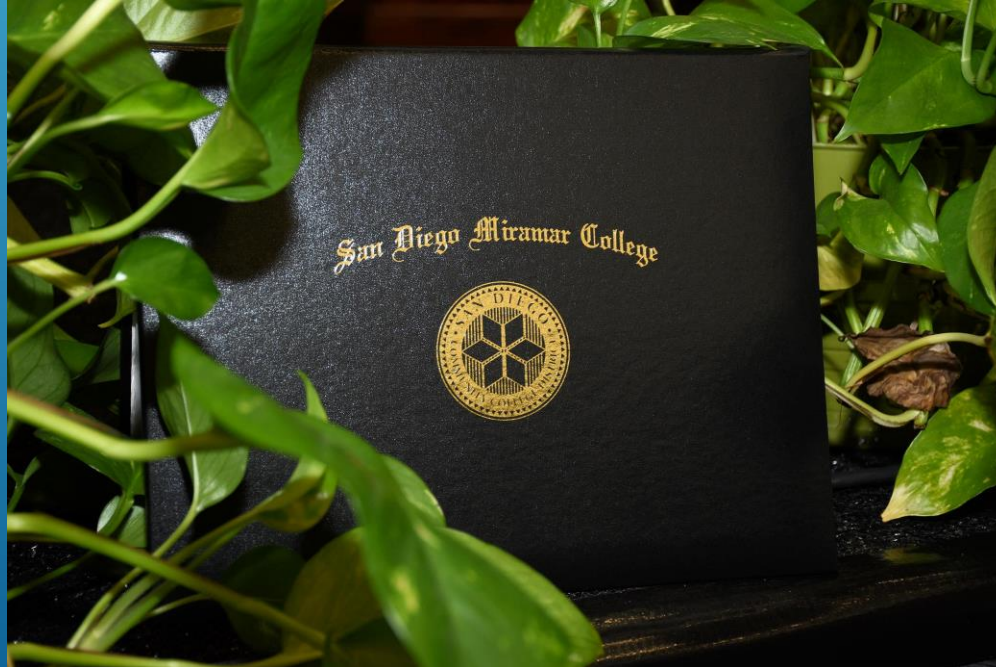


SOCIAL DETERMINANTS OF EDUCATIONAL SUCCESS

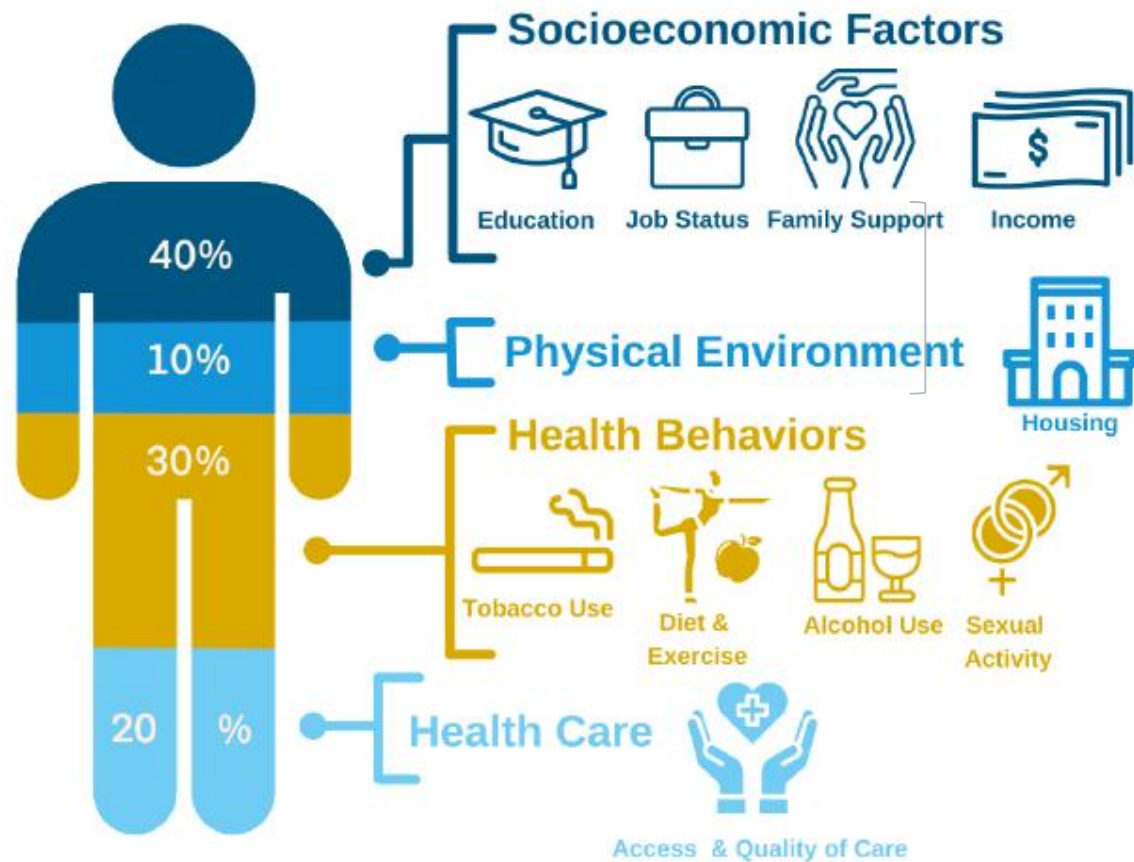


**IDEA WAS DISCUSSED AT THE
OCTOBER 2021
BOARD OF GOVERNOR'S
LEARNING SESSION**



- **BASED ON THE IDEA OF SOCIAL DETERMINATES WHICH CAME OUT OF HEALTH CARE**
 - **THE SOCIAL DETERMINANTS OF HEALTH (SDOH) MODEL WAS PUBLISHED IN 2008**
 - **SDOH EXPLAINS THAT CERTAIN SOCIAL FACTORS CAN HAVE THE SAME OR EVEN GREATER IMPACTS THAN HEALTHY CHOICES AND QUALITY HEALTH CARE.**
- 
- A series of three parallel white diagonal lines extending from the bottom right towards the top right of the slide.

Access & Quality Healthcare only
contributes 20% to whether a person is
healthy or not



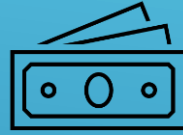


**STUDENT'S INTELLECTUAL ABILITY IS
NOT NECESSARILY THE BEST OR
ONLY PREDICATOR OF
EDUCATIONAL SUCCESS**

Social Determinants that Impact Educational Success



Socioeconomic Factors



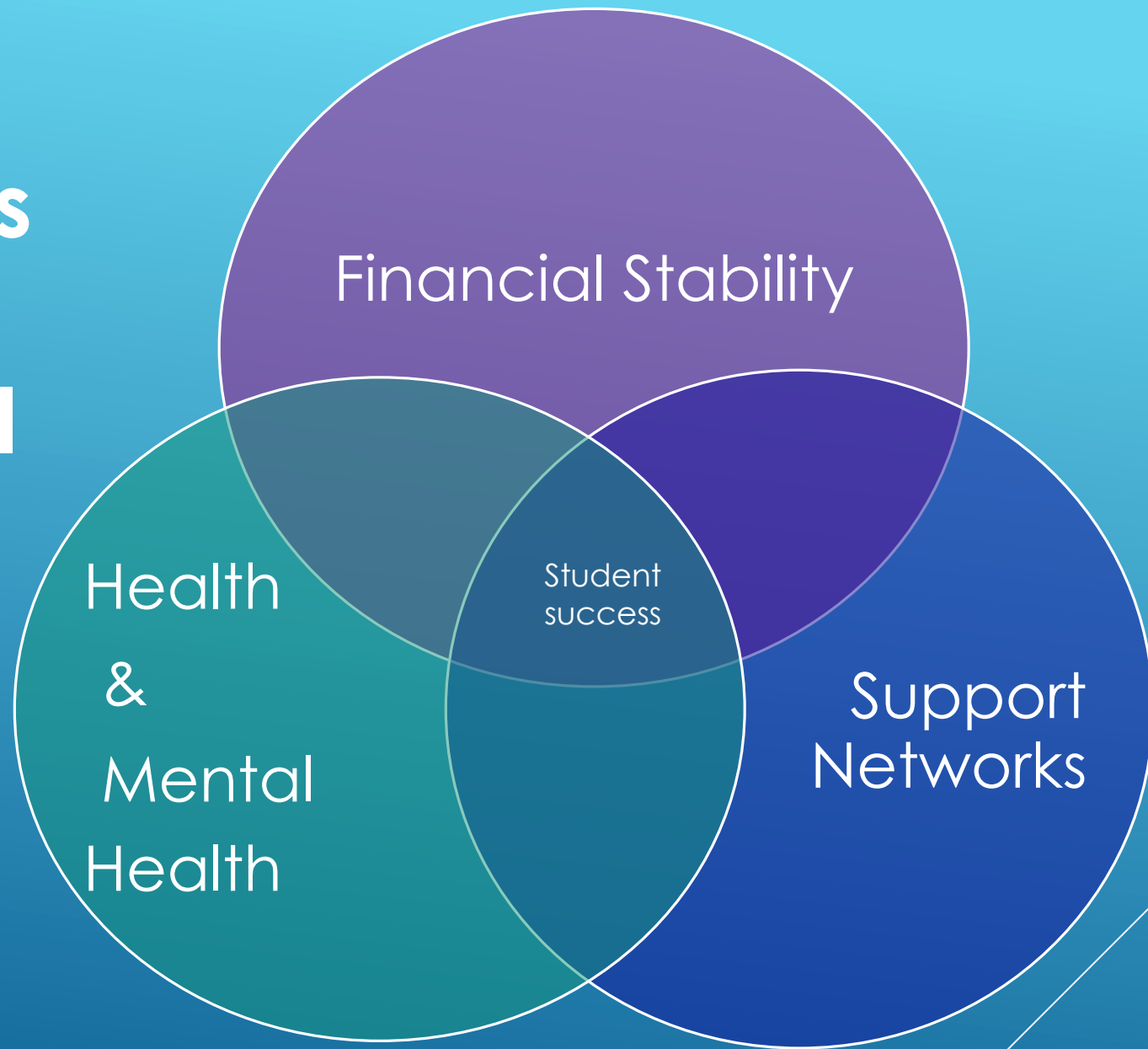
Physical Environment



Health Factors



Core Social Determinants of Educational success



**THE CHANCELLOR'S OFFICE IS
ASKING THAT WE REFRAME
HOW WE DO THINGS**



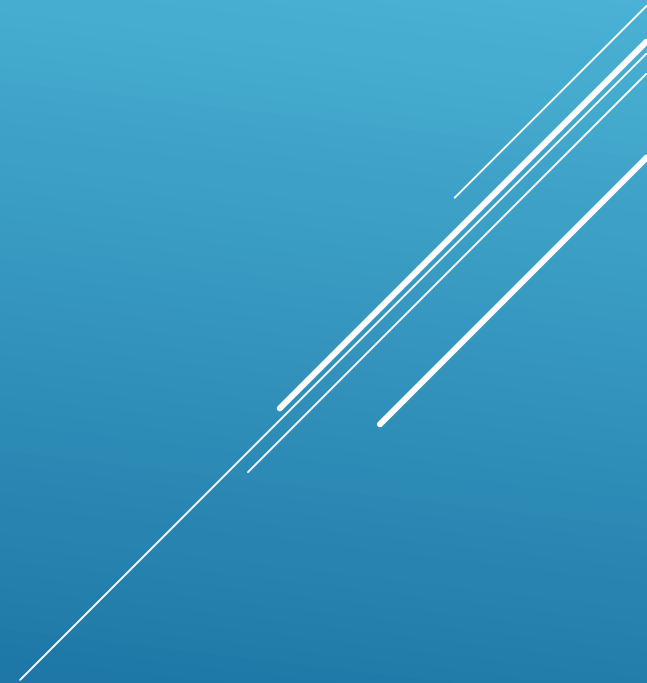
THE MESSY REALITY OF THE STUDENT EXPERIENCE

- Intake forms
- Eligibility Requirements
- Applications
- Verifications
- Available Services



We need to Shift Structures so that we create an ecosystem that is:

- Student Focused
- Clarifies Problems
- Removes Barriers to Services
- Increase access to successful interventions



An example is the recent charge for a comprehensive Basic Needs Center

